



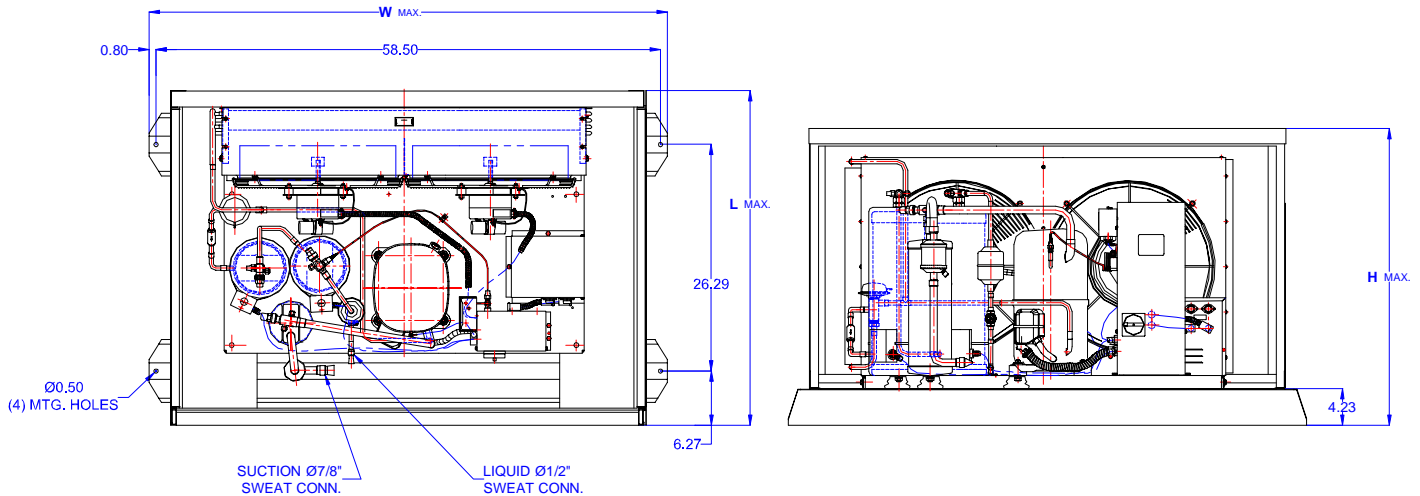
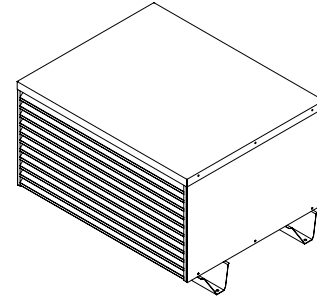
TECUMSEH HERMETIC CONDENSING UNIT



AGA4553EXHHL
TPC rev 05
March 1, 2004

Model AGA4553EXHHL
BOM 2H4070-2E

Air Cooled 4 HP
Application High Temp
Refrigerant R 22



| Model | Dim. Enclosure(inch)* | | | Line connections | | Pumpdown | Air flow | Oil Ch. | Gross weight |
|---------------------|-----------------------|-------|-------|------------------|-----------|------------|----------|---------|--------------|
| | L | W | H | Suction | Liquid | 90% @ 90°F | SCFM | Oz. | Lbs. |
| AGA4553EXHHL | 39.38 | 60.00 | 34.38 | 7/8 Sweat | 1/2 Sweat | 53.75 | 4200 | 65 | 500 |

*) Enclosure Mounting Holes, 26.25 x 58.5

Factory charge 20 psig dry air, **MUST BE EVACUATED**

| Evaporator | Ambient Temperatures | | | | | | | | | | | | | | | | |
|------------|----------------------|--------------|-------------|------------|------------|--------------|-------------|------------|------------|--------------|-------------|------------|------------|--------------|-------------|------------|------------|
| | | | 80°F | | | | 90°F | | | | 100°F | | | | 110°F | | |
| °F | Psig | BTUH | Watts | Head | Cond T | BTUH | Watts | Head | Cond T | BTUH | Watts | Head | Cond T | BTUH | Watts | Head | Cond T |
| 20 | 43.0 | 39300 | 4140 | 208 | 103 | 35000 | 4200 | 236 | 112 | 32100 | 4250 | 267 | 121 | 27100 | 4320 | 293 | 128 |
| 25 | 48.7 | 41940 | 4470 | 216 | 105 | 38370 | 4560 | 244 | 114 | 35440 | 4620 | 274 | 122 | 31550 | 4710 | 302 | 131 |
| 30 | 54.8 | 44050 | 4800 | 223 | 109 | 41500 | 4900 | 253 | 116 | 38550 | 5000 | 281 | 125 | 36200 | 5100 | 312 | 133 |
| 35 | 61.4 | 48640 | 5150 | 234 | 111 | 45450 | 5270 | 262 | 120 | 42330 | 5380 | 292 | 128 | 39100 | 5520 | 321 | 135 |
| 40 | 68.5 | 52470 | 5520 | 241 | 113 | 49200 | 5650 | 270 | 122 | 46000 | 5750 | 300 | 130 | 42700 | 5900 | 328 | 137 |
| 45 | 76.0 | 56320 | 5820 | 253 | 116 | 53000 | 6000 | 281 | 125 | 49650 | 6150 | 312 | 133 | 46350 | 6350 | 338 | 140 |
| 50 | 84.0 | 59430 | 6150 | 264 | 120 | 56000 | 6350 | 293 | 128 | 52500 | 6550 | 320 | 134 | 49100 | 6750 | 350 | 142 |

