



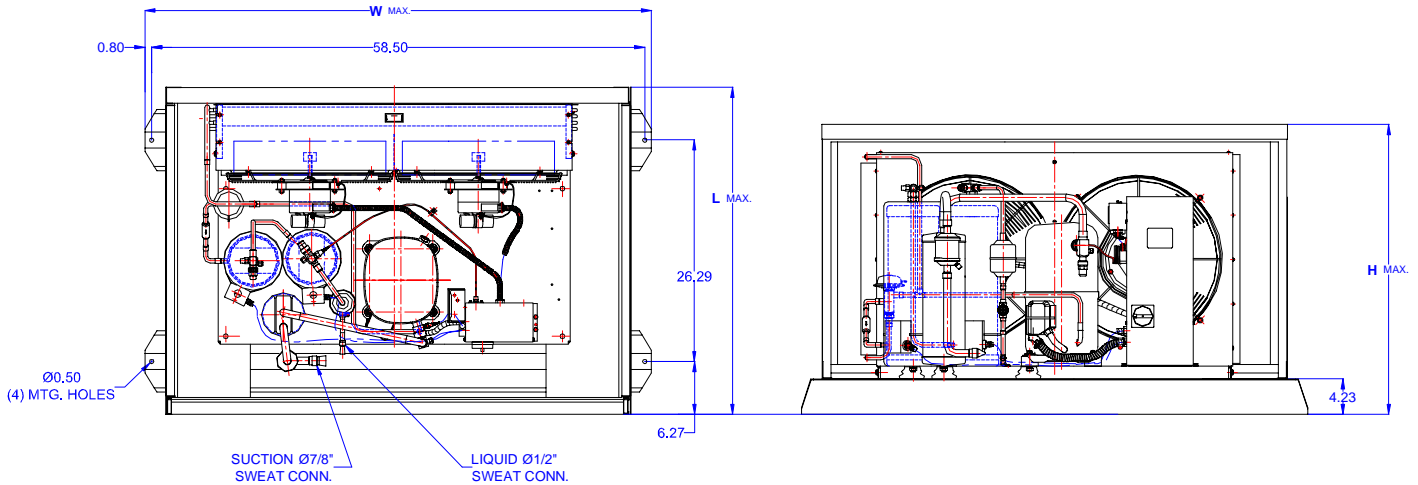
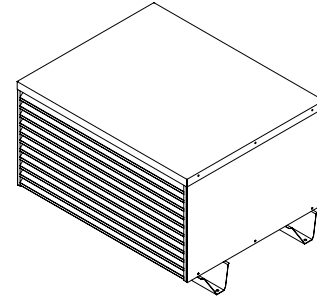
TECUMSEH HERMETIC CONDENSING UNIT



AGA4553EXNHL
TPC__rev 03
February 27, 2004

Model **AGA4553EXNHL**
BOM **2H4052-2E**

Air Cooled **4 HP**
Application **High Temp**
Refrigerant **R 22**



Model	Dim. Enclosure(inch)*			Line connections		Pumpdown	Air flow	Oil Ch.	Gross weight
	L	W	H	Suction	Liquid	90% @ 90°F	SCFM	Oz.	Lbs.
AGA4553EXNHL	39.38	60.00	34.38	7/8 Sweat	1/2 Sweat	53.75	4200	65	500

*) Enclosure Mounting Holes, 26.25 x 58.5

Factory charge 20 psig dry air, **MUST BE EVACUATED**

Evaporator		Ambient Temperatures															
		80°F				90°F				100°F				110°F			
°F	Psig	BTUH	Watts	Head	Cond T	BTUH	Watts	Head	Cond T	BTUH	Watts	Head	Cond T	BTUH	Watts	Head	Cond T
20	43.0	39300	4140	208	103	35000	4200	236	112	32100	4250	267	121	27100	4320	293	128
25	48.7	41940	4470	216	105	38370	4560	244	114	35440	4620	274	122	31550	4710	302	131
30	54.8	44050	4800	223	109	41500	4900	253	116	38550	5000	281	125	36200	5100	312	133
35	61.4	48640	5150	234	111	45450	5270	262	120	42330	5380	292	128	39100	5520	321	135
40	68.5	52470	5520	241	113	49200	5650	270	122	46000	5750	300	130	42700	5900	328	137
45	76.0	56320	5820	253	116	53000	6000	281	125	49650	6150	312	133	46350	6350	338	140
50	84.0	59430	6150	264	120	56000	6350	293	128	52500	6550	320	134	49100	6750	350	142

Parts/Specifications

STANDARD		OPTIONAL	
Unit BOM	2H4052-2E	Fan Motor	810S124B38
Unit MODEL	AGA4553EXNHL	Fan Motor Qty	2
		Fan Motor RLA	1.45
Refrigeration RANGE	+20F TO +55F	Fan Blade	51529-2
Design Pressure Low	150	Fan Guard	70832
Design Pressure High	450	Shroud	70611-1
Volts - HZ - Ph	208-230-60-1		
Voltage Range	253 - 197	High Pressure switch	84095-1
Min. Circuit Ampacity	37.3	Low Pressure Control	84026-D
Max. Fuse Size	60	Dual Pressure Control	
		Condenser	50785-4
Compressor MODEL	AGA5553EXN	Head Master Valve	LAC-5-180-1/2
Compressor BOM	AG122ET-003-A4	Check Valve	CV-020-1012
Compressor LRA	132	Process Valve	
Compressor RLA	26.2	Liquid Valve	31590
		Suction Valve	31529-1
OverLoad		Receiver	51082-2
Relay	820ARR3C30	Receiver Qty	2
Run Capacitor	85PR440E65	Accumulator	TK00044000
Run Capacitor Rating	45MFD 440V(M)VDE	Liquid Filter	5200-164D
Start Capacitor	85PS330D16	Sight Glass	SG-08D
Start Capacitor Rating	130-156 MFD 330V	Suction Filter	70822-5
Contactors	91014		
		CrankCase Heater	90699
Unit Drawing	DGU1901-21H-2A		
Wiring no Fan controls	WD21-2XT2		

BOM INDEX DESCRIPTION	
2xYYYY- 2ERA(F)TnDS	
E	Enclosure
R	Receiver Heater
A	Adjustable fan control
F	Fixed fan Control
T1	Defrost timer option
T2	Defrost timer & Defrost Heaters Contactor
D	Disconnect
S	Solenoid liquid Valve (supplied loose)

