



# TECUMSEH HERMETIC CONDENSING UNIT

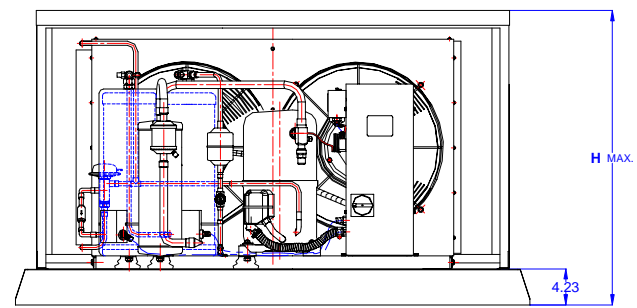
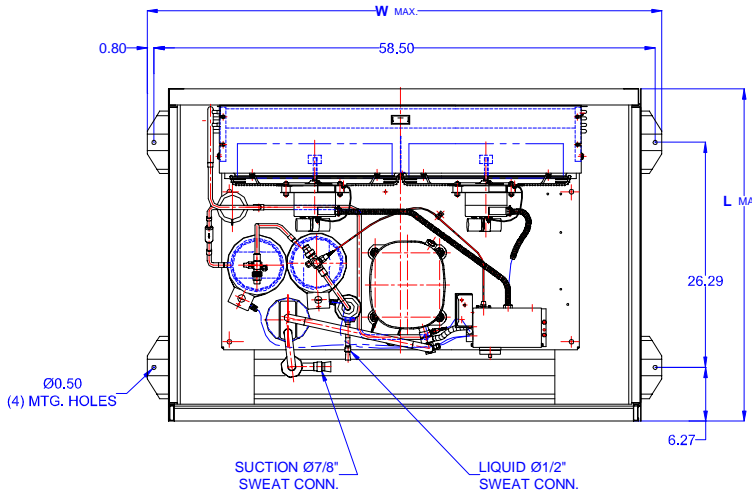
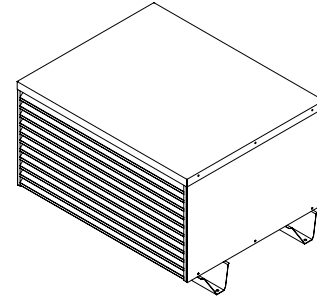


AGA4553EXTHL  
TPC rev 04  
March 1, 2004

**Model**                    **AGA4553EXTHL**  
**BOM**                     **2H4053-2E**  


---

**Air Cooled**            **4 HP**  
**Application**          **High Temp**  
**Refrigerant**          **R 22**



Model	Dim. Enclosure(inch)*			Line connections		Pumpdown	Air flow	Oil Ch.	Gross weight
	L	W	H	Suction	Liquid	90% @ 90°F	SCFM	Oz.	Lbs.
<b>AGA4553EXTHL</b>	39.38	60.00	34.38	7/8 Sweat	1/2 Sweat	53.75	4200	65	500

\*) Enclosure Mounting Holes, 26.25 x 58.5

Factory charge 20 psig dry air, **MUST BE EVACUATED**

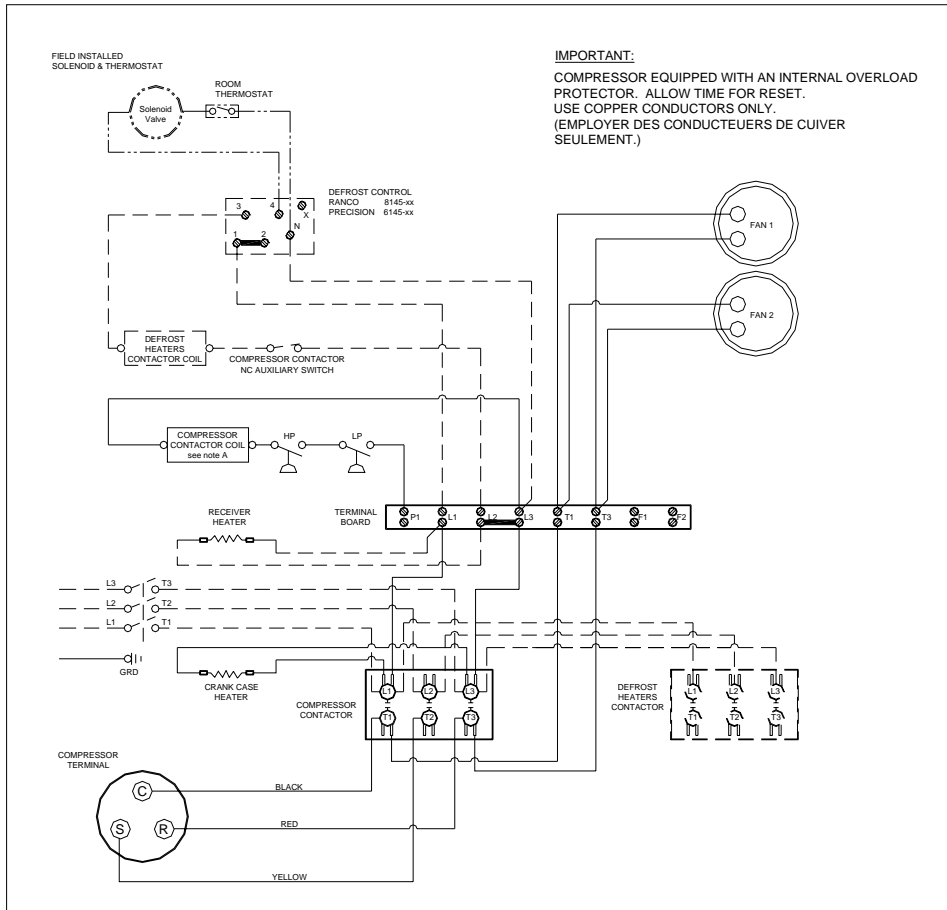
Evaporator	Ambient Temperatures																
			80°F				90°F				100°F				110°F		
°F	Psig	BTUH	Watts	Head	Cond T	BTUH	Watts	Head	Cond T	BTUH	Watts	Head	Cond T	BTUH	Watts	Head	Cond T
20	43.0	39300	4140	208	103	35000	4200	236	112	32100	4250	267	121	27100	4320	293	128
25	48.7	41940	4470	216	105	38370	4560	244	114	35440	4620	274	122	31550	4710	302	131
30	54.8	44050	4800	223	109	41500	4900	253	116	38550	5000	281	125	36200	5100	312	133
35	61.4	48640	5150	234	111	45450	5270	262	120	42330	5380	292	128	39100	5520	321	135
40	68.5	52470	5520	241	113	49200	5650	270	122	46000	5750	300	130	42700	5900	328	137
<b>45</b>	<b>76.0</b>	<b>56320</b>	<b>5820</b>	<b>253</b>	<b>116</b>	<b>53000</b>	<b>6000</b>	<b>281</b>	<b>125</b>	<b>49650</b>	<b>6150</b>	<b>312</b>	<b>133</b>	<b>46350</b>	<b>6350</b>	<b>338</b>	<b>140</b>
50	84.0	59430	6150	264	120	56000	6350	293	128	52500	6550	320	134	49100	6750	350	142

Parts/Specifications

STANDARD		OPTIONAL	
Unit BOM	2H4053-2E	Fan Motor	810S124B38
Unit MODEL	AGA4553EXTHL	Fan Motor Qty	2
		Fan Motor RLA	1.45
Refrigeration RANGE	+20F TO +55F	Fan Blade	51529-2
Design Pressure Low	150	Fan Guard	70832
Design Pressure High	450	Shroud	70611-1
Volts - HZ - Ph	200-230-60-3		
Voltage Range	253 - 180	High Pressure switch	84095-1
Min. Circuit Ampacity	23.7	Low Pressure Control	84026-D
Max. Fuse Size	40	Dual Pressure Control	
		Condenser	50785-4
Compressor MODEL	AGA5553EXT	Head Master Valve	LAC-5-180-1/2
Compressor BOM	AG122RT-003-A4	Check Valve	CV-020-1012
Compressor LRA	103	Process Valve	
Compressor RLA	16.5	Liquid Valve	31590
		Suction Valve	31529-1
OverLoad			
Relay		Receiver	51082-2
Run Capacitor		Receiver Qty	2
Run Capacitor Rating		Accumulator	TK00044000
Start Capacitor		Liquid Filter	5200-164D
Start Capacitor Rating		Sight Glass	SG-08D
Contactor	91014	Suction Filter	70822-5
Unit Drawing	DGU1901-22H-2A	CrankCase Heater	90699
Wiring no Fan controls	WD23-2XT2		

BOM INDEX DESCRIPTION	
<b>2xYYYY- 2ERA(F)TnDS</b>	
E	Enclosure
R	Receiver Heater
A	Adjustable fan control
F	Fixed fan Control
T1	Defrost timer option
T2	Defrost timer & Defrost Heaters Contactor
D	Disconnect
S	Solenoid liquid Valve (supplied loose)



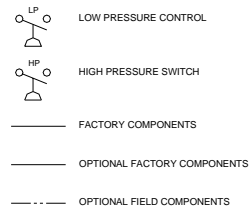
NOTES

FIELD WIRING NOTES

1. ALL FIELD WIRING MUST BE DONE IN COMPLIANCE WITH ALL APPLICABLE LOCAL AND NATIONAL CODES.
2. CONNECT INCOMING POWER LEADS FROM POWER SUPPLY TO L1, L2, AND L3 IN COMPRESSOR CONTACTOR OR TO L1, L2 AND L3 IN DISCONNECT SWITCH (IF PROVIDED). USE COPPER CONDUCTORS ONLY. (EMPLOYER DES CONDUCTEURS DE CUIVRE SEULEMENT.) PROVIDE EQUIPMENT GROUNDING CONDUCTOR. USE 75°C (MIN.) WIRING
3. PLACE JUMPER ACROSS P1 AND L1 IN TERMINAL BOARD IF NO OTHER CONTROLLING DEVICE IS INSTALLED.
4. DEFROST HEATERS LOADS SHOULD NOT BE HIGHER THEN THE MAXIMUM HEATERS LOAD. INDICATED ON THE UNIT LABEL.

GENERAL NOTES:

- A. CONTACTOR COIL CIRCUIT IS FACTORY CONNECTED TO 230 V SOURCE IN PANEL AS SHOWN
- B. COMPRESSOR EQUIPPED WITH AN INTERNAL OVERLOAD PROTECTOR. ALLOW TIME FOR RESET.



CONDENSING UNIT WIRING, 230V 60Hz 3 Ph, NO fan controls, T1 & T2 defrost options

A	REVISION	MAY 23, 2003	WD23-2XT2