



# TECUMSEH HERMETIC CONDENSING UNIT

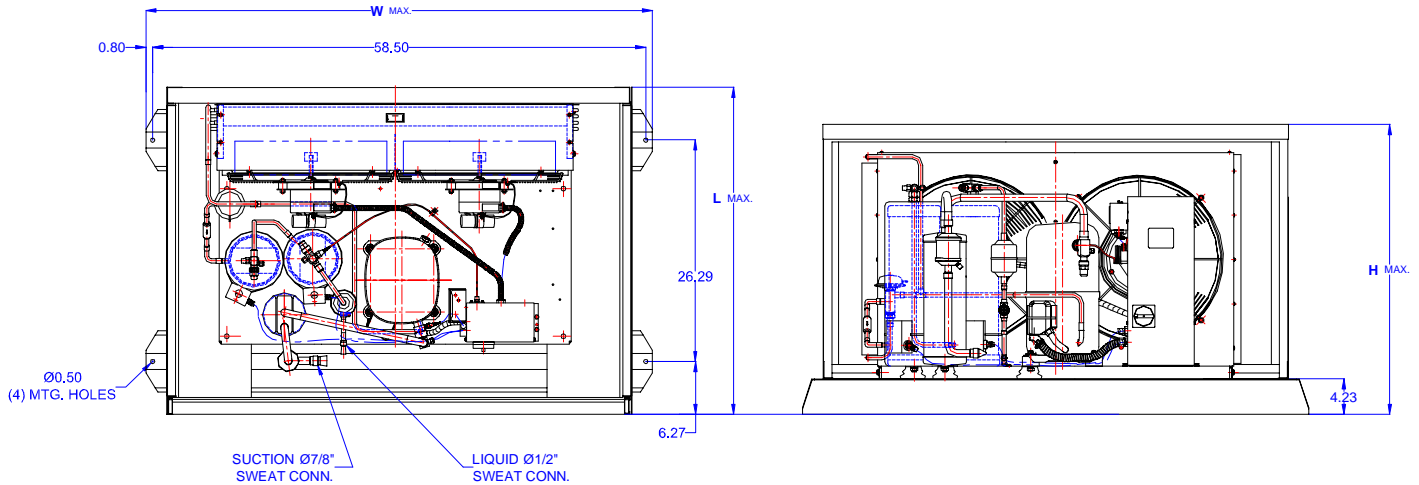
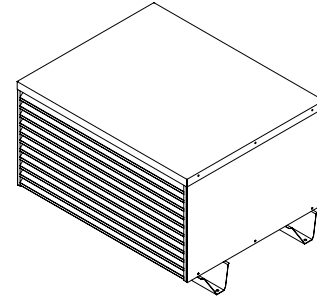


AGA4563EXNHL  
TPC\_\_rev 04  
February 27, 2004

**Model**                    **AGA4563EXNHL**  
**BOM**                       **2H5058-2E**

---

**Air Cooled**           **5 HP**  
**Application**       **High Temp**  
**Refrigerant**       **R 22**



Model	Dim. Enclosure(inch)*			Line connections		Pumpdown	Air flow	Oil Ch.	Gross weight
	L	W	H	Suction	Liquid	90% @ 90°F	SCFM	Oz.	Lbs.
<b>AGA4563EXNHL</b>	39.38	60.00	34.38	7/8 Sweat	1/2 Sweat	58.68	5000	65	500

\*) Enclosure Mounting Holes, 26.25 x 58.5

Factory charge 20 psig dry air, **MUST BE EVACUATED**

Evaporator	Ambient Temperatures																
			80°F				90°F				100°F				110°F		
°F	Psig	BTUH	Watts	Head	Cond T	BTUH	Watts	Head	Cond T	BTUH	Watts	Head	Cond T	BTUH	Watts	Head	Cond T
20	43.0	46470	4890	190	97	42000	5000	220	107	37600	5120	250	117	33100	5220	280	124
25	48.7	50530	5260	196	99	46060	5390	226	108	41680	5510	255	117	37170	5650	285	126
30	54.8	54500	5650	203	102	50000	5800	232	111	45500	5910	260	120	41000	6080	290	128
35	61.4	58390	5970	210	104	54010	6150	240	113	49810	6330	269	121	45330	6510	299	130
40	68.5	62230	6290	216	105	58000	6500	245	114	54100	6700	275	123	49700	6920	304	131
<b>45</b>	<b>76.0</b>	<b>66900</b>	<b>6690</b>	<b>226</b>	<b>108</b>	<b>62450</b>	<b>6900</b>	<b>255</b>	<b>117</b>	<b>58500</b>	<b>7210</b>	<b>284</b>	<b>126</b>	<b>53800</b>	<b>7370</b>	<b>313</b>	<b>133</b>
50	84.0	69420	7050	235	111	65300	7300	265	121	61450	7600	295	129	57200	7820	325	136

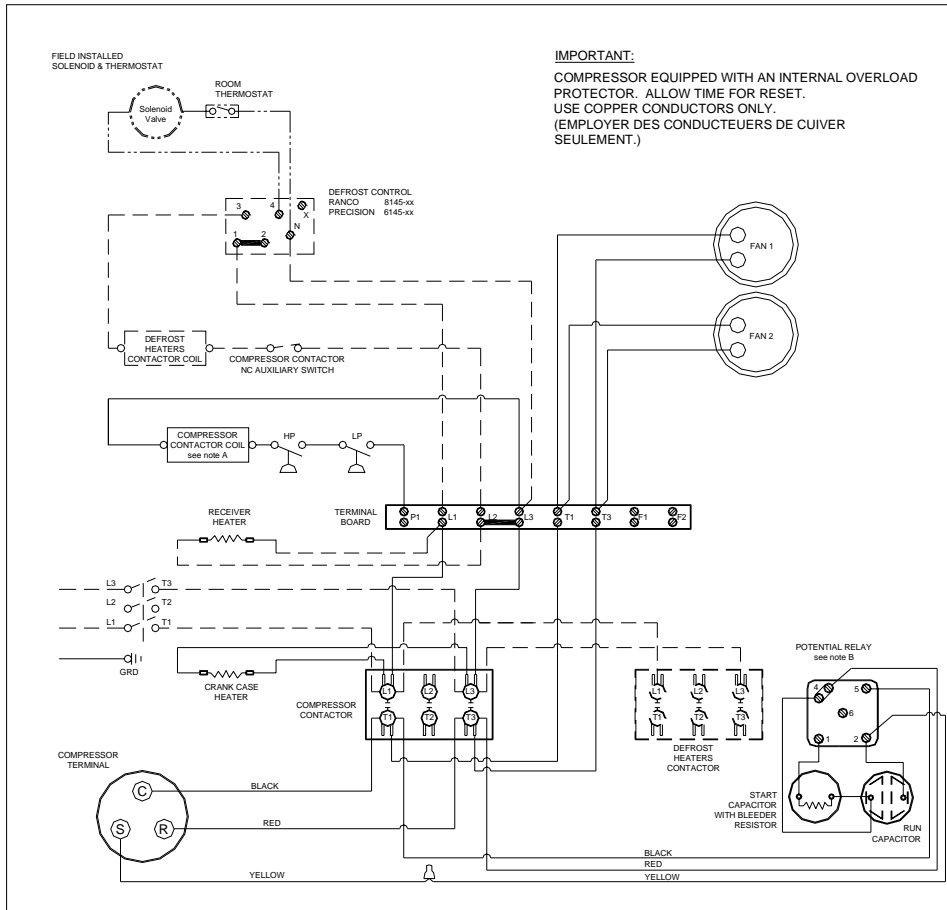
Parts/Specifications

STANDARD		OPTIONAL	
Unit BOM	2H5058-2E	Fan Motor	810S186B40
Unit MODEL	AGA4563EXNHL	Fan Motor Qty	2
		Fan Motor RLA	1.9
Refrigeration RANGE	+20F TO +55F	Fan Blade	51528-2
Design Pressure Low	150	Fan Guard	70832
Design Pressure High	450	Shroud	70611-1
Volts - HZ - Ph	208-230-60-1		
Voltage Range	253 - 197	High Pressure switch	84095-1
Min. Circuit Ampacity	42.1	Low Pressure Control	84026-D
Max. Fuse Size	70	Dual Pressure Control	
		Condenser	50777-6
Compressor MODEL	AGA5561EXN	Head Master Valve	LAC-5-180-1/2
Compressor BOM	AG133ET-001-A4	Check Valve	CV-020-1012
Compressor LRA	165	Process Valve	
Compressor RLA	30.5	Liquid Valve	31590
OverLoad		Suction Valve	31529-1
Relay	820ARR3C30	Receiver	51082-2
Run Capacitor	85PR440E90	Receiver Qty	2
Run Capacitor Rating	55MFD 440V(M)VDE	Accumulator	TK00044000
Start Capacitor	85PS330D16	Liquid Filter	5200-164D
Start Capacitor Rating	130-156 MFD 330V	Sight Glass	SG-08D
Contactor	91012	Suction Filter	70822-5
		CrankCase Heater	90699
Unit Drawing	DGU1901-21H-2A		
Wiring no Fan controls	WD21-2XT2		

BOM INDEX DESCRIPTION

2xYYYY- 2ERA(F)TnDS

- E Enclosure
- R Receiver Heater
- A Adjustable fan control
- F Fixed fan Control
- T1 Defrost timer option
- T2 Defrost timer & Defrost Heaters Contactor
- D Disconnect
- S Solenoid liquid Valve (supplied loose)



NOTES

FIELD WIRING NOTES

- ALL FIELD WIRING MUST BE DONE IN COMPLIANCE WITH ALL APPLICABLE LOCAL AND NATIONAL CODES.
- CONNECT INCOMING POWER LEADS FROM POWER SUPPLY TO L1, AND L3 IN COMPRESSOR CONTACTOR (L1 AND L2 IF TWO POLE CONTACTOR) OR TO L1 AND L3 IN DISCONNECT SWITCH (IF PROVIDED). USE COPPER CONDUCTORS ONLY. (EMPLOYER DES CONDUCTEURS DE CUIVRE SEULEMENT.) PROVIDE EQUIPMENT GROUNDING CONDUCTOR. USE 75°C (MIN.) WIRING.
- PLACE JUMPER ACROSS P1 AND L1 IN TERMINAL BOARD IF NO OTHER CONTROLLING DEVICE IS INSTALLED.
- DEFROST HEATERS LOADS SHOULD NOT BE HIGHER THEN THE MAXIMUM HEATERS LOAD. INDICATED ON THE UNIT LABEL.

GENERAL NOTES:

- CONTACTOR COIL CIRCUIT IS FACTORY CONNECTED TO 230 V SOURCE IN PANEL AS SHOWN
- WITH ANY T.P.Co. APPROVED START RELAY USED, CONNECT LEADS TO SAME NUMBERED TERMINALS REGARDLESS OF LOCATION
- COMPRESSOR EQUIPPED WITH AN INTERNAL OVERLOAD PROTECTOR. ALLOW TIME FOR RESET.

LP LOW PRESSURE CONTROL

HP HIGH PRESSURE SWITCH

FACTORY COMPONENTS

OPTIONAL FACTORY COMPONENTS

OPTIONAL FIELD COMPONENTS

CONDENSING UNIT WIRING, 230V 60Hz 1 Ph, NO fan controls, T1 & T2 defrost options

REVISION  
MAY 23, 2003

WD21-2XT2