



# TECUMSEH HERMETIC CONDENSING UNIT

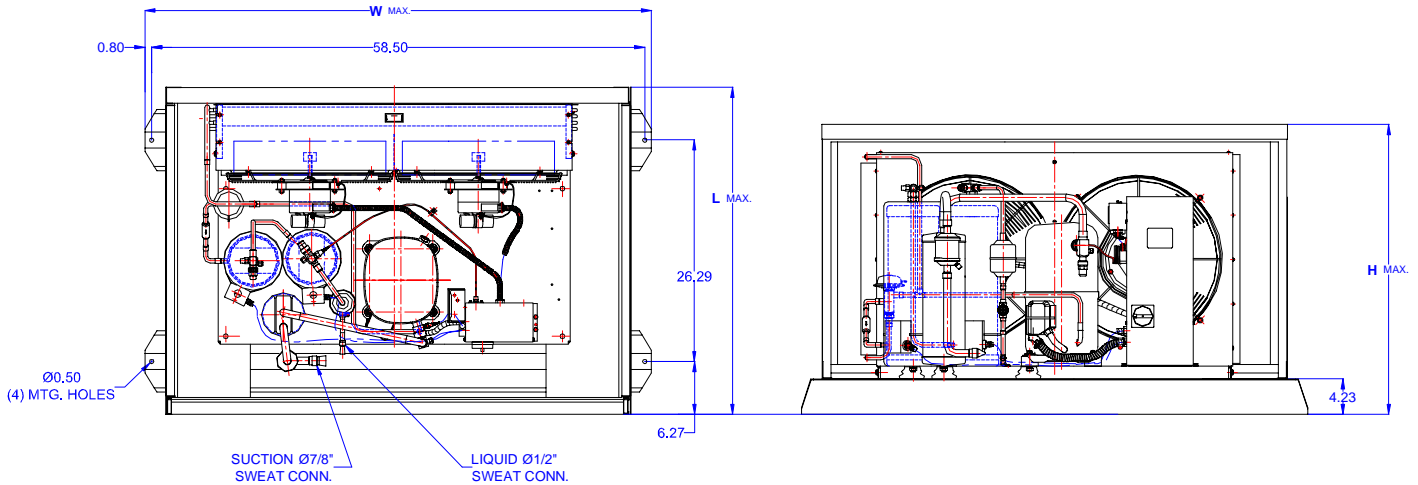
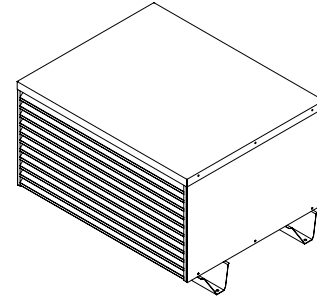


AGA4572EXNHL  
TPC\_\_rev 04  
February 27, 2004

**Model**                    **AGA4572EXNHL**  
**BOM**                      **2H5060-2E**  

---

**Air Cooled**            **6 HP**  
**Application**         **High Temp**  
**Refrigerant**         **R 22**



Model	Dim. Enclosure(inch)*			Line connections		Pumpdown	Air flow	Oil Ch.	Gross weight
	L	W	H	Suction	Liquid	90% @ 90°F	SCFM	Oz.	Lbs.
<b>AGA4572EXNHL</b>	39.38	60.00	34.38	7/8 Sweat	1/2 Sweat	58.68	5000	65	500

\*) Enclosure Mounting Holes, 26.25 x 58.5

Factory charge 20 psig dry air, **MUST BE EVACUATED**

Evaporator	Ambient Temperatures																
			80°F				90°F				100°F				110°F		
°F	Psig	BTUH	Watts	Head	Cond T	BTUH	Watts	Head	Cond T	BTUH	Watts	Head	Cond T	BTUH	Watts	Head	Cond T
20	43.0	48670	5850	194	99	44000	5920	225	108	39400	6020	253	117	34700	6070	285	126
25	48.7	54240	6130	202	102	49450	6250	232	111	44760	6370	260	119	39920	6500	292	128
30	54.8	59930	6390	211	104	55000	6570	240	113	50000	6720	267	121	45100	6920	297	129
35	61.4	66010	6820	216	105	61100	7010	247	115	56360	7190	275	123	51360	7380	307	131
40	68.5	71900	7140	220	107	67000	7370	253	117	62500	7570	281	125	57400	7820	316	134
<b>45</b>	<b>76.0</b>	<b>77100</b>	<b>7600</b>	<b>232</b>	<b>111</b>	<b>72000</b>	<b>7820</b>	<b>263</b>	<b>121</b>	<b>67500</b>	<b>8070</b>	<b>293</b>	<b>128</b>	<b>62100</b>	<b>8270</b>	<b>325</b>	<b>136</b>
50	84.0	84930	7960	240	113	80000	8220	272	122	75000	8540	297	129	70100	8770	333	138

Parts/Specifications

STANDARD		OPTIONAL	
Unit BOM	2H5060-2E	Fan Motor	810S186B40
Unit MODEL	AGA4572EXNHL	Fan Motor Qty	2
		Fan Motor RLA	1.9
Refrigeration RANGE	+20F TO +55F	Fan Blade	51528-2
Design Pressure Low	150	Fan Guard	70832
Design Pressure High	450	Shroud	70611-1
Volts - HZ - Ph	208-230-60-1		
Voltage Range	253 - 197	High Pressure switch	84095-1
Min. Circuit Ampacity	47.5	Low Pressure Control	84026-D
Max. Fuse Size	80	Dual Pressure Control	
		Condenser	50777-6
Compressor MODEL	AGA5568EXN	Head Master Valve	LAC-5-180-1/2
Compressor BOM	AG144ET-002-A4	Check Valve	CV-020-1012
Compressor LRA	179	Process Valve	
Compressor RLA	34.8	Liquid Valve	31590
		Suction Valve	31529-1
OverLoad		Receiver	51082-2
Relay	820ARR3C30	Receiver Qty	2
Run Capacitor	85PR440E90	Accumulator	TK00044000
Run Capacitor Rating	55MFD 440V(M)VDE	Liquid Filter	5200-164D
Start Capacitor	85PS330D16	Sight Glass	SG-08D
Start Capacitor Rating	130-156 MFD 330V	Suction Filter	70822-5
Contactor	91012		
		CrankCase Heater	90699
Unit Drawing	DGU1901-21H-2A		
Wiring no Fan controls	WD21-2XT2		

BOM INDEX DESCRIPTION	
<b>2xYYYY- 2ERA(F)TnDS</b>	
E	Enclosure
R	Receiver Heater
A	Adjustable fan control
F	Fixed fan Control
T1	Defrost timer option
T2	Defrost timer & Defrost Heaters Contactor
D	Disconnect
S	Solenoid liquid Valve (supplied loose)

