



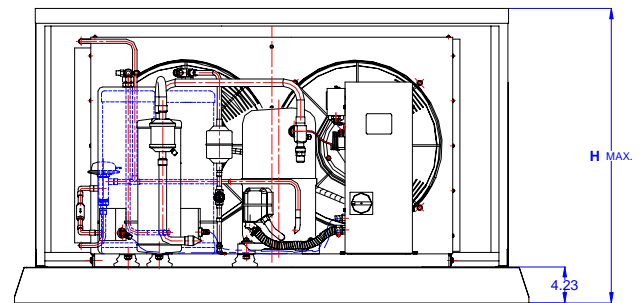
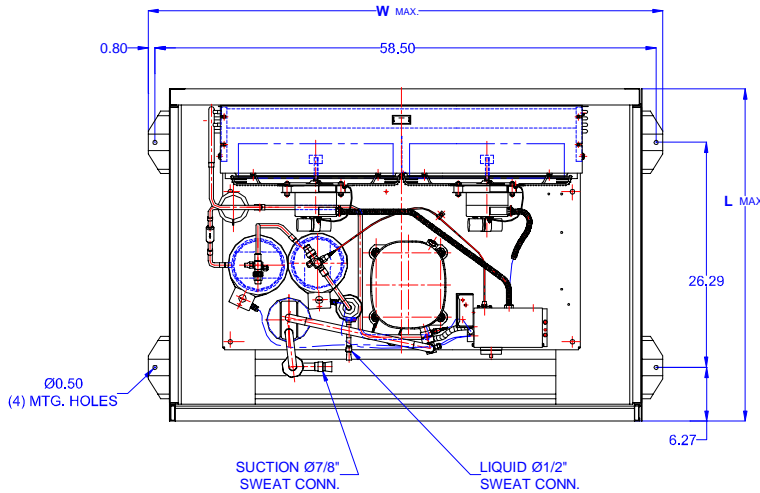
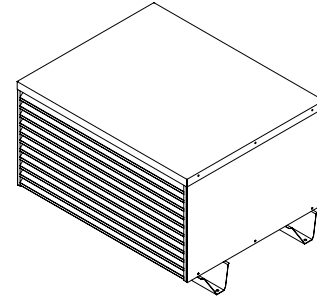
TECUMSEH HERMETIC CONDENSING UNIT



AGA4572EXTHL
TPC rev 05
March 1, 2004

Model **AGA4572EXTHL**
BOM **2H5061-2E**

Air Cooled **6 HP**
Application **High Temp**
Refrigerant **R 22**



| Model | Dim. Enclosure(inch)* | | | Line connections | | Pumpdown | Air flow | Oil Ch. | Gross weight |
|---------------------|-----------------------|-------|-------|------------------|-----------|------------|----------|---------|--------------|
| | L | W | H | Suction | Liquid | 90% @ 90°F | SCFM | Oz. | Lbs. |
| AGA4572EXTHL | 39.38 | 60.00 | 34.38 | 7/8 Sweat | 1/2 Sweat | 58.68 | 5000 | 65 | 500 |

*) Enclosure Mounting Holes, 26.25 x 58.5

Factory charge 20 psig dry air, **MUST BE EVACUATED**

| Evaporator | Ambient Temperatures | | | | | | | | | | | | | | | | |
|------------|----------------------|--------------|-------------|------------|------------|--------------|-------------|------------|------------|--------------|-------------|------------|------------|--------------|-------------|------------|------------|
| | | | 80°F | | | | 90°F | | | | 100°F | | | | 110°F | | |
| °F | Psig | BTUH | Watts | Head | Cond T | BTUH | Watts | Head | Cond T | BTUH | Watts | Head | Cond T | BTUH | Watts | Head | Cond T |
| 20 | 43.0 | 48670 | 5850 | 194 | 99 | 44000 | 5920 | 225 | 108 | 39400 | 6020 | 253 | 117 | 34700 | 6070 | 285 | 126 |
| 25 | 48.7 | 54240 | 6130 | 202 | 102 | 49450 | 6250 | 232 | 111 | 44760 | 6370 | 260 | 119 | 39920 | 6500 | 292 | 128 |
| 30 | 54.8 | 59930 | 6390 | 211 | 104 | 55000 | 6570 | 240 | 113 | 50000 | 6720 | 267 | 121 | 45100 | 6920 | 297 | 129 |
| 35 | 61.4 | 66010 | 6820 | 216 | 105 | 61100 | 7010 | 247 | 115 | 56360 | 7190 | 275 | 123 | 51360 | 7380 | 307 | 131 |
| 40 | 68.5 | 71900 | 7140 | 220 | 107 | 67000 | 7370 | 253 | 117 | 62500 | 7570 | 281 | 125 | 57400 | 7820 | 316 | 134 |
| 45 | 76.0 | 77100 | 7600 | 232 | 111 | 72000 | 7820 | 263 | 121 | 67500 | 8070 | 293 | 128 | 62100 | 8270 | 325 | 136 |
| 50 | 84.0 | 84930 | 7960 | 240 | 113 | 80000 | 8220 | 272 | 122 | 75000 | 8540 | 297 | 129 | 70100 | 8770 | 333 | 138 |

| Parts/Specifications | | | |
|------------------------|----------------|-----------------------|---------------|
| STANDARD | | OPTIONAL | |
| Unit BOM | 2H5061-2E | Fan Motor | 810S186B40 |
| Unit MODEL | AGA4572EXTHL | Fan Motor Qty | 2 |
| | | Fan Motor RLA | 1.9 |
| Refrigeration RANGE | +20F TO +55F | Fan Blade | 51528-2 |
| Design Pressure Low | 150 | Fan Guard | 70832 |
| Design Pressure High | 450 | Shroud | 70611-1 |
| Volts - HZ - Ph | 200-230-60-3 | | |
| Voltage Range | 253 - 180 | High Pressure switch | 84095-1 |
| Min. Circuit Ampacity | 31 | Low Pressure Control | 84026-D |
| Max. Fuse Size | 50 | Dual Pressure Control | |
| | | Condenser | 50777-6 |
| Compressor MODEL | AGA5568EXT | Head Master Valve | LAC-5-180-1/2 |
| Compressor BOM | AG144RT-001-A4 | Check Valve | CV-020-1012 |
| Compressor LRA | 135 | Process Valve | |
| Compressor RLA | 21.6 | Liquid Valve | 31590 |
| | | Suction Valve | 31529-1 |
| OverLoad | | | |
| Relay | | Receiver | 51082-2 |
| Run Capacitor | | Receiver Qty | 2 |
| Run Capacitor Rating | | Accumulator | TK00044000 |
| Start Capacitor | | Liquid Filter | 5200-164D |
| Start Capacitor Rating | | Sight Glass | SG-08D |
| Contactor | 91014 | Suction Filter | 70822-5 |
| | | | |
| Unit Drawing | DGU1901-22H-2A | CrankCase Heater | 90699 |
| Wiring no Fan controls | WD23-2XT2 | | |

| BOM INDEX DESCRIPTION | |
|----------------------------|---|
| 2xYYYY- 2ERA(F)TnDS | |
| E | Enclosure |
| R | Receiver Heater |
| A | Adjustable fan control |
| F | Fixed fan Control |
| T1 | Defrost timer option |
| T2 | Defrost timer & Defrost Heaters Contactor |
| D | Disconnect |
| S | Solenoid liquid Valve (supplied loose) |

