

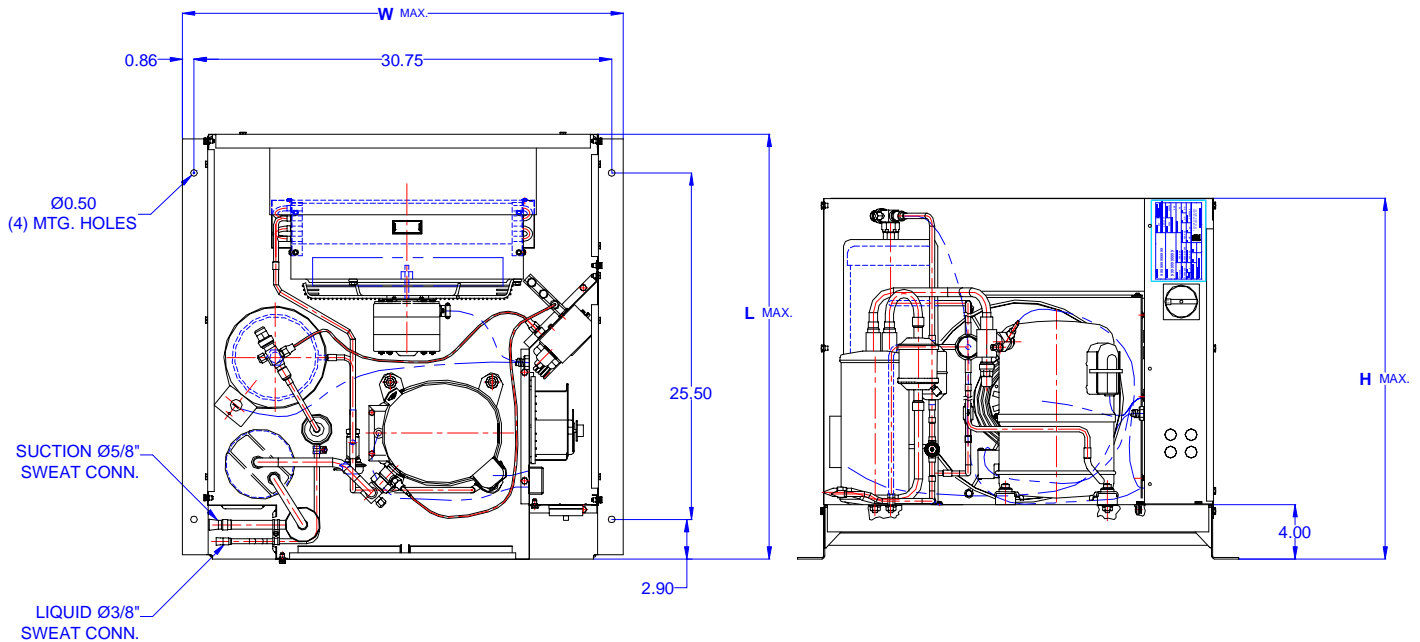
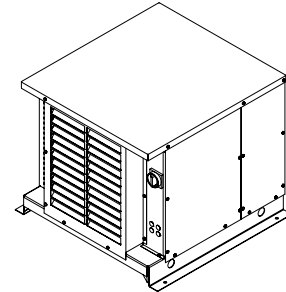


TECUMSEH HERMETIC CONDENSING UNIT

AWG4520EXNHL
TPC__rev 03
February 27, 2004

Model **AWG4520EXNHL**
BOM **2K3215-2E**

Air Cooled **1 1/2 HP**
Application **High Temp**
Refrigerant **R 22**



Model	Dimensions (inch)			Line connections		Pumpdown	Air flow	Oil Ch.	Gross weight
	L	W	H	Suction	Liquid	90% @ 90°F	SCFM	Oz.	Lbs.
AWG4520EXNHL	31.50	32.50	26.75	5/8 Sweat	3/8 Sweat	23.80	750	38	200

Factory charge 20 psig dry air, **MUST BE EVACUATED**

Evaporator		Ambient Temperatures															
		80°F				90°F				100°F				110°F			
°F	Psig	BTUH	Watts	Head	Cond T	BTUH	Watts	Head	Cond T	BTUH	Watts	Head	Cond T	BTUH	Watts	Head	Cond T
10	32.8	10218	1480	195	99	9211	1493	221	107	8240	1515	249	117	7241	1534	281	125
15	37.7	11608	1575	204	102	10493	1597	230	110	9397	1625	258	119	8294	1646	290	128
20	43.0	13407	1674	213	104	11819	1706	239	113	10605	1739	268	121	9397	1764	300	130
25	48.7	14533	1776	222	108	13189	1818	249	117	11865	1858	279	124	10551	1888	311	133
30	54.8	16067	1881	233	111	14604	1935	260	120	13177	1982	290	128	11755	2019	323	136
35	61.4	17648	1990	244	114	16063	2055	273	122	14541	2110	303	131	13010	2156	336	139
40	68.5	192278	2102	256	119	17566	2180	285	126	15956	2243	316	134	14315	2299	350	142
45	76.0	20955	2217	269	121	19114	2309	299	130	17424	2381	330	137	15670	2448	364	145
50	84.0	22681	2335	283	126	20707	2441	314	134	18942	2523	345	141	17077	2604	380	149
55	92.6	24454	2457	298	130	22344	2578	330	137	20513	2670	361	144	18533	2766	396	152

Performance @ 60 Hz, Return Gas Temperature 65°F, --- SubCooling 5°F

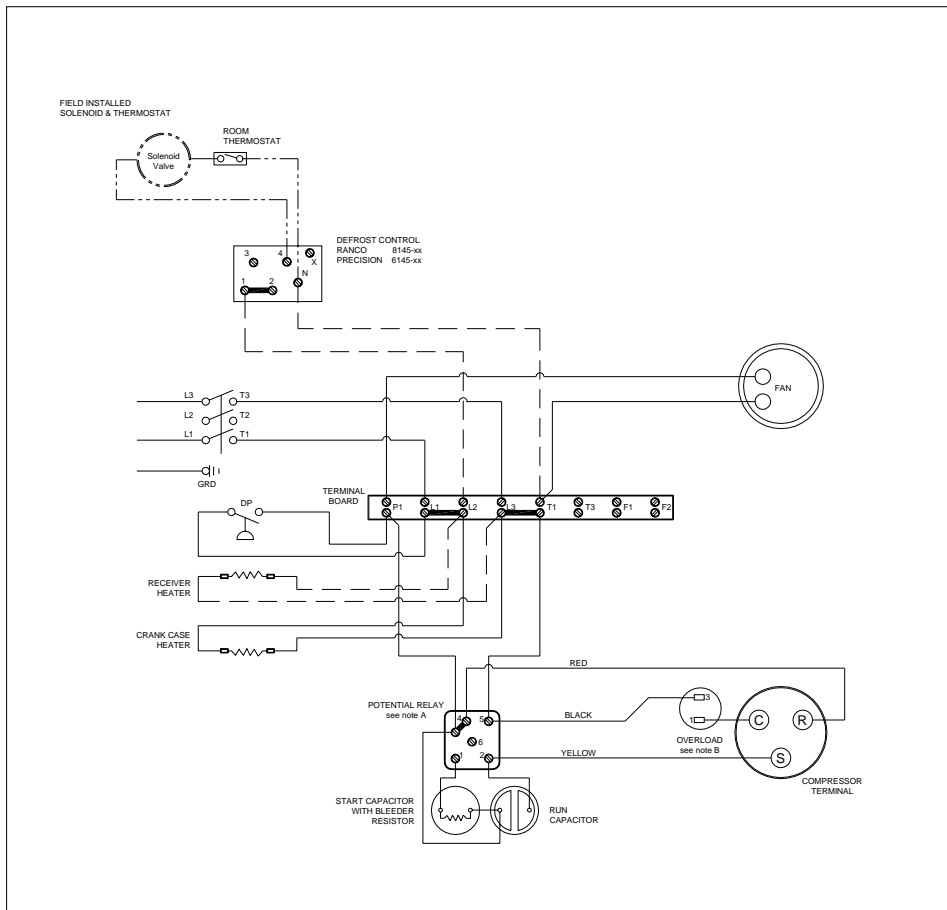
Parts/Specifications

STANDARD		OPTIONAL	
Unit BOM	2K3215-2E	Fan Motor	810S050A99
Unit MODEL	AWG4520EXNHL	Fan Motor Qty	1
		Fan Motor RLA	1.3
Refrigeration RANGE	+20F TO +55F	Fan Blade	51568
Design Pressure Low	150	Fan Guard	70831
Design Pressure High	450	Shroud	70727-2
Volts - HZ - Ph	208-230-60-1		
Voltage Range	253 - 197	High Pressure switch	
Min. Circuit Ampacity	13.4	Low Pressure Control	
Max. Fuse Size	20	Dual Pressure Control	84066
Compressor MODEL	AWG5520EXN	Condenser	50857-1
Compressor BOM	AW703ET-111-A2	Head Master Valve	LAC-4-180-3/8
Compressor LRA	52	Check Valve	CV-020-1011
Compressor RLA	9.5	Process Valve	
		Liquid Valve	31590
OverLoad	Internal	Suction Valve	31531-1
Relay	820ARR3H23		
Run Capacitor	85PR370F20	Receiver	51082-2
Run Capacitor Rating	25MFD 370V(M)VDE	Receiver Qty	1
Start Capacitor	85PS330D17	Accumulator	TK00042000
Start Capacitor Rating	145-175 MFD 330V	Liquid Filter	5200-083D
Contactors		Sight Glass	SG-06D
		Suction Filter	WSF-5S
Unit Drawing	DGU1918-KE		
Wiring no Fan controls	WD21-1T1	CrankCase Heater	91022-1

BOM INDEX DESCRIPTION

2xYYYY- 2ERA(F)TnDS

- E Enclosure
- R Receiver Heater
- A Adjustable fan control
- F Fixed fan Control
- T1 Defrost timer option
- T2 Sight timer & Defrost Heaters Contactor
- D Disconnect
- S Solenoid liquid Valve (supplied loose)



NOTES

FIELD WIRING NOTES

- ALL FIELD WIRING MUST BE DONE IN COMPLIANCE WITH ALL APPLICABLE LOCAL AND NATIONAL CODES.
- CONNECT INCOMING POWER LEADS FROM POWER SUPPLY TO L1 AND L3 IN TERMINAL BOARD OR TO L1 AND L3 IN DISCONNECT SWITCH (IF PROVIDED). USE COPPER CONDUCTORS ONLY. (EMPLOYER DES CONDUCTEURS DE CUIVRE SEULEMENT.) PROVIDE EQUIPMENT GROUNDING CONDUCTOR. USE 75°C (MIN.) WIRING

GENERAL NOTES:

- A. WITH ANY T.P.Co. APPROVED START RELAY USED, CONNECT LEADS TO SAME NUMBERED TERMINALS REGARDLESS OF LOCATION
- B. COMPRESSOR MAY BE EQUIPPED WITH EITHER INTERNAL OR EXTERNAL OVERLOAD PROTECTOR. (DIAGRAM SHOWS AN EXTERNAL OVERLOAD) COMPRESSORS THAT ARE EQUIPPED WITH INTERNAL OVERLOAD ARE ALL "AG"-s, "AV"-s, "AW"-s AND SOME "AJ"-s. ALLOW TIME FOR RESET.

DP DUAL PRESSURE CONTROL

— FACTORY COMPONENTS

----- OPTIONAL FACTORY COMPONENTS

----- OPTIONAL FIELD COMPONENTS

CONDENSING UNIT WIRING, 230V 60Hz 1 Ph, single fan
T1 defrost option

REVISION

WD21-1T1