

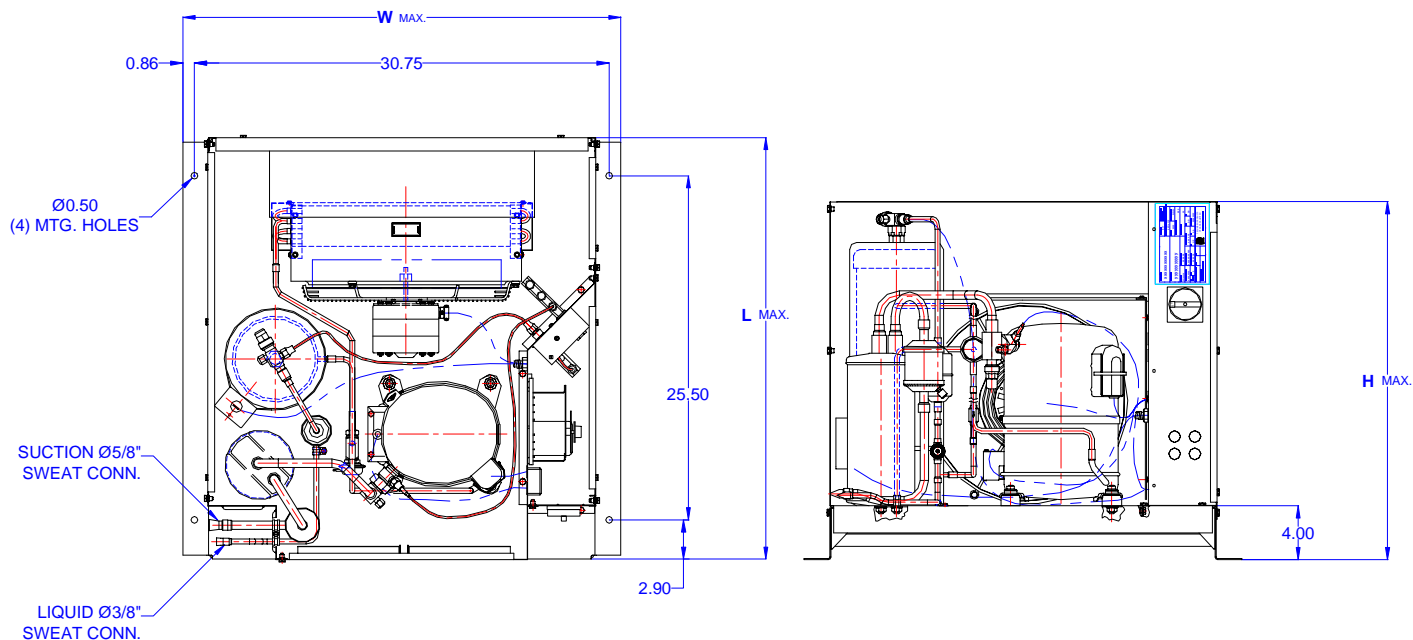
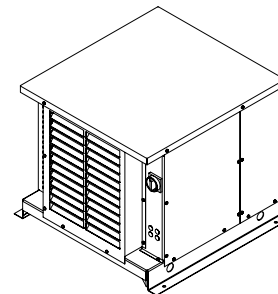


TECUMSEH HERMETIC CONDENSING UNIT

AWG4520EXTHL
TPC__rev 03
February 27, 2004

Model **AWG4520EXTHL**
BOM **2K3216-2E**

Air Cooled **1 1/2 HP**
Application **High Temp**
Refrigerant **R 22**



Model	Dimensions (inch)			Line connections		Pumpdown	Air flow	Oil Ch.	Gross weight
	L	W	H	Suction	Liquid	90% @ 90°F	SCFM	Oz.	Lbs.
AWG4520EXTHL	31.50	32.50	26.75	5/8 Sweat	3/8 Sweat	23.80	750	38	200

Factory charge 20 psig dry air, **MUST BE EVACUATED**

Evaporator		Ambient Temperatures															
		80°F				90°F				100°F				110°F			
°F	Psig	BTUH	Watts	Head	Cond T	BTUH	Watts	Head	Cond T	BTUH	Watts	Head	Cond T	BTUH	Watts	Head	Cond T
10	32.8	10218	1480	195	99	9211	1493	221	107	8240	1515	249	117	7241	1534	281	125
15	37.7	11608	1575	204	102	10493	1597	230	110	9397	1625	258	119	8294	1646	290	128
20	43.0	13407	1674	213	104	11819	1706	239	113	10605	1739	268	121	9397	1764	300	130
25	48.7	14533	1776	222	108	13189	1818	249	117	11865	1858	279	124	10551	1888	311	133
30	54.8	16067	1881	233	111	14604	1935	260	120	13177	1982	290	128	11755	2019	323	136
35	61.4	17648	1990	244	114	16063	2055	273	122	14541	2110	303	131	13010	2156	336	139
40	68.5	192278	2102	256	119	17566	2180	285	126	15956	2243	316	134	14315	2299	350	142
45	76.0	20955	2217	269	121	19114	2309	299	130	17424	2381	330	137	15670	2448	364	145
50	84.0	22681	2335	283	126	20707	2441	314	134	18942	2523	345	141	17077	2604	380	149
55	92.6	24454	2457	298	130	22344	2578	330	137	20513	2670	361	144	18533	2766	396	152

Performance @ 60 Hz, Return Gas Temperature 65°F, --- SubCooling 5°F

