

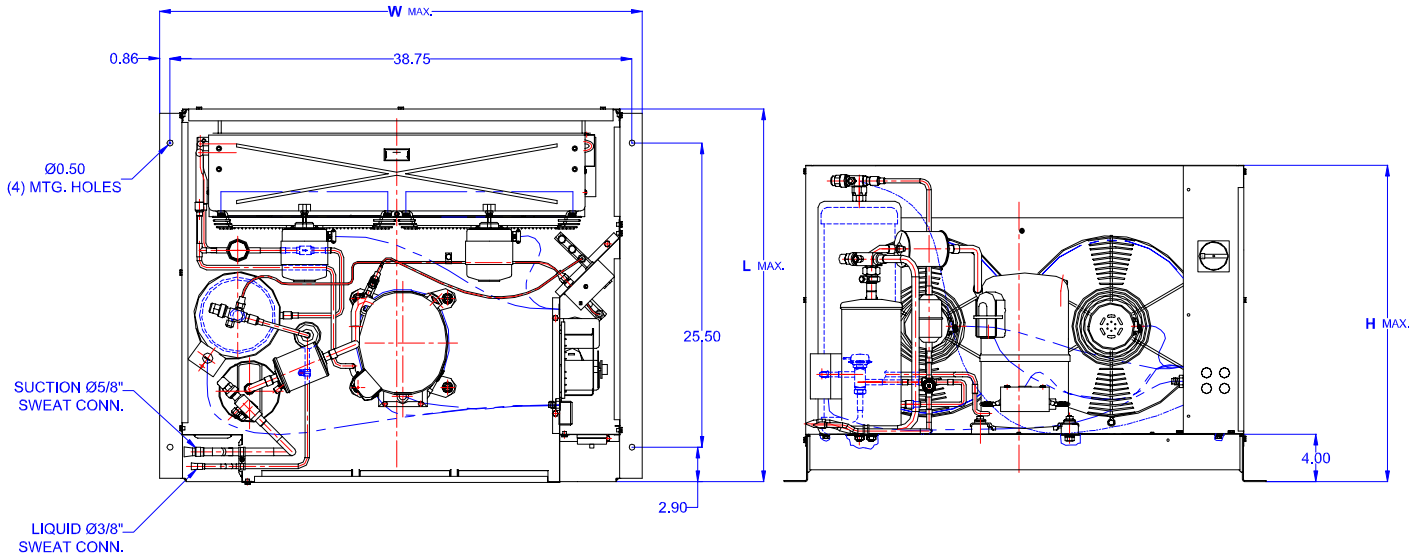
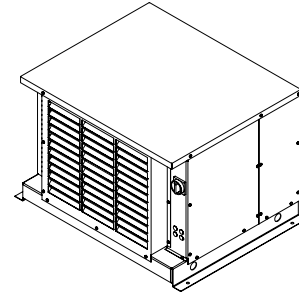


TECUMSEH HERMETIC CONDENSING UNIT

AWG4530EXNHL
TPC rev 04
March 23, 2004

Model **AWG4530EXNHL**
BOM **2K2106-2E**

Air Cooled **2 1/2 HP**
Application **High Temp**
Refrigerant **R 22**



Model	Dimensions (inch)			Line connections		Pumpdown	Air flow	Oil Ch.	Gross weight
	L	W	H	Suction	Liquid	90% @ 90°F	SCFM	Oz.	Lbs.
AWG4530EXNHL	31.50	40.50	26.75	5/8 Sweat	3/8 Sweat	26.38	1550	38	300

Factory charge 20 psig dry air, **MUST BE EVACUATED**

Evaporator	Ambient Temperatures																
	80°F					90°F				100°F				110°F			
°F	Psig	BTUH	Watts	Head	Cond T	BTUH	Watts	Head	Cond T	BTUH	Watts	Head	Cond T	BTUH	Watts	Head	Cond T
10	32.8	16250	2237	184	95	14870	2278	212	104	13484	2319	242	114	12205	2386	275	123
15	37.7	18210	2368	190	97	16743	2431	218	106	15201	2488	248	116	13750	2561	282	125
20	43.0	20339	2499	196	99	18728	2583	224	108	17042	2655	255	117	15416	2736	289	127
25	48.7	22593	2630	203	102	20827	2734	232	111	19007	2819	263	121	17203	2910	297	129
30	54.8	24973	2762	210	104	23039	2884	240	113	21097	2980	271	123	19110	3083	306	132
35	61.4	27477	2893	218	106	25363	3032	248	116	23310	3138	280	124	21137	3256	315	134
40	68.5	30107	3025	226	108	27801	3180	258	119	25648	3294	289	127	23285	3487	325	136
45	76.0	32861	3157	235	111	30352	3327	268	121	28109	3447	299	130	25554	3599	336	139
50	84.0	35741	3289	245	114	33015	3473	278	125	30695	3597	309	132	27943	3769	347	141
55	92.6	38745	3421	255	117	35792	3618	290	128	33405	3745	321	135	30453	3939	359	144

Performance @ 60 Hz, Return Gas Temperature 65°F, --- SubCooling 5°F

