



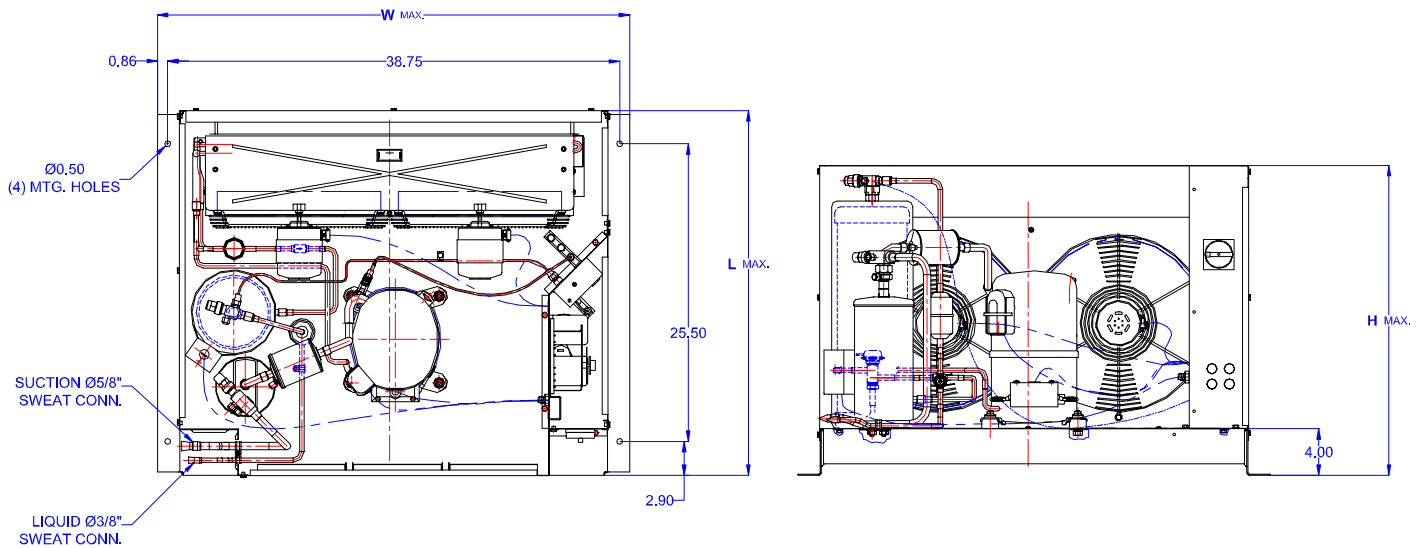
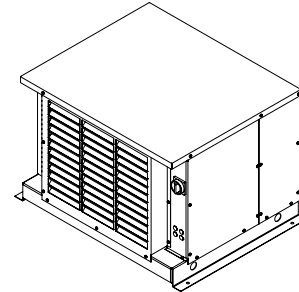
TECUMSEH HERMETIC CONDENSING UNIT



AWG4530EXTHL
TPC rev 04
March 23, 2004

Model **AWG4530EXTHL**
BOM **2K2107-2E**

Air Cooled **2 1/2 HP**
Application **High Temp**
Refrigerant **R 22**



Model	Dimensions (inch)			Line connections		Pumpdown	Air flow	Oil Ch.	Gross weight
	L	W	H	Suction	Liquid	90% @ 90°F	SCFM	Oz.	Lbs.
AWG4530EXTHL	31.50	40.50	26.75	5/8 Sweat	3/8 Sweat	26.38	1550	38	300

Factory charge 20 psig dry air, **MUST BE EVACUATED**

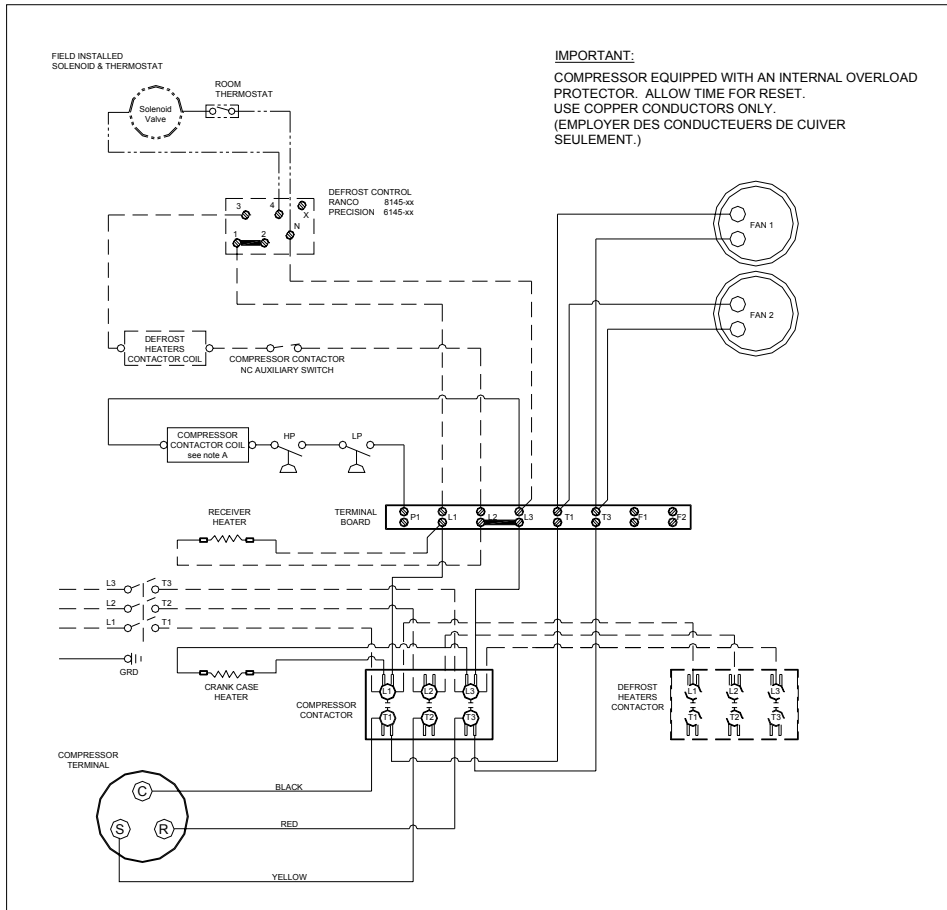
Evaporator	Ambient Temperatures																
	80°F					90°F				100°F				110°F			
°F	Psig	BTUH	Watts	Head	Cond T	BTUH	Watts	Head	Cond T	BTUH	Watts	Head	Cond T	BTUH	Watts	Head	Cond T
10	32.8	16250	2237	184	95	14870	2278	212	104	13484	2319	242	114	12205	2386	275	123
15	37.7	18210	2368	190	97	16743	2431	218	106	15201	2488	248	116	13750	2561	282	125
20	43.0	20339	2499	196	99	18728	2583	224	108	17042	2655	255	117	15416	2736	289	127
25	48.7	22593	2630	203	102	20827	2734	232	111	19007	2819	263	121	17203	2910	297	129
30	54.8	24973	2762	210	104	23039	2884	240	113	21097	2980	271	123	19110	3083	306	132
35	61.4	27477	2893	218	106	25363	3032	248	116	23310	3138	280	124	21137	3256	315	134
40	68.5	30107	3025	226	108	27801	3180	258	119	25648	3294	289	127	23285	3487	325	136
45	76.0	32861	3157	235	111	30352	3327	268	121	28109	3447	299	130	25554	3599	336	139
50	84.0	35741	3289	245	114	33015	3473	278	125	30695	3597	309	132	27943	3769	347	141
55	92.6	38745	3421	255	117	35792	3618	290	128	33405	3745	321	135	30453	3939	359	144

Performance @ 60 Hz, Return Gas Temperature 65°F, --- SubCooling 5°F

Parts/Specifications

STANDARD		OPTIONAL	
Unit BOM	2K2107-2E	Fan Motor	810S050A99
Unit MODEL	AWG4530EXTHL	Fan Motor Qty	2
		Fan Motor RLA	1.3
Refrigeration RANGE	+20F TO +55F	Fan Blade	51568
Design Pressure Low	150	Fan Guard	70831
Design Pressure High	450	Shroud	70648-2
Volts - HZ - Ph	200-230-60-3		
Voltage Range	253 - 180	High Pressure switch	84095-1
Min. Circuit Ampacity	13.7	Low Pressure Control	84026-D
Max. Fuse Size	20	Dual Pressure Control	
		Condenser	50858
Compressor MODEL	AWG5530EXT	Head Master Valve	LAC-4-180-3/8
Compressor BOM	AW707RT-120-A2	Check Valve	CV-020-1011
Compressor LRA	63.4	Process Valve	31583-1
Compressor RLA	8.7	Liquid Valve	31590
		Suction Valve	31531-1
OverLoad	Internal		
Relay		Receiver	51082-2
Run Capacitor		Receiver Qty	1
Run Capacitor Rating		Accumulator	TK00042000
Start Capacitor		Liquid Filter	5200-083D
Start Capacitor Rating		Sight Glass	SG-06D
Contactor	91014	Suction Filter	WSF-5S
Unit Drawing	DGU1918-6KE	CrankCase Heater	91022-1
Wiring no Fan controls	WD23-2XT2		

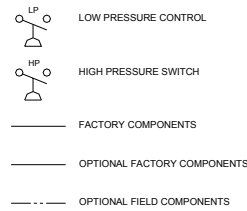
BOM INDEX DESCRIPTION	
2xYYYY- 2ERA(F)TnDS	
E	Enclosure
R	Receiver Heater
A	Adjustable fan control
F	Fixed fan Control
T1	Defrost timer option
T2	Defrost timer & Defrost Heaters Contactor
D	Disconnect
S	Solenoid liquid Valve (supplied loose)



NOTES

- FIELD WIRING NOTES**
- ALL FIELD WIRING MUST BE DONE IN COMPLIANCE WITH ALL APPLICABLE LOCAL AND NATIONAL CODES.
 - CONNECT INCOMING POWER LEADS FROM POWER SUPPLY TO L1, L2, AND L3 IN COMPRESSOR CONTACTOR OR TO L1, L2 AND L3 IN DISCONNECT SWITCH (IF PROVIDED). USE COPPER CONDUCTORS ONLY. (EMPLOYER DES CONDUCTEURS DE CUIVRE SEULEMENT.) PROVIDE EQUIPMENT GROUNDING CONDUCTOR. USE 75°C (MIN.) WIRING
 - PLACE JUMPER ACROSS P1 AND L1 IN TERMINAL BOARD IF NO OTHER CONTROLLING DEVICE IS INSTALLED.
 - DEFROST HEATERS LOADS SHOULD NOT BE HIGHER THEN THE MAXIMUM HEATERS LOAD. INDICATED ON THE UNIT LABEL.

- GENERAL NOTES:**
- CONTACTOR COIL CIRCUIT IS FACTORY CONNECTED TO 230 V SOURCE IN PANEL AS SHOWN
 - COMPRESSOR EQUIPPED WITH AN INTERNAL OVERLOAD PROTECTOR. ALLOW TIME FOR RESET.



CONDENSING UNIT WIRING, 230V 60Hz 3 Ph, NO fan controls, T1 & T2 defrost options

A	REVISION	MAY 23, 2003	WD23-2XT2