



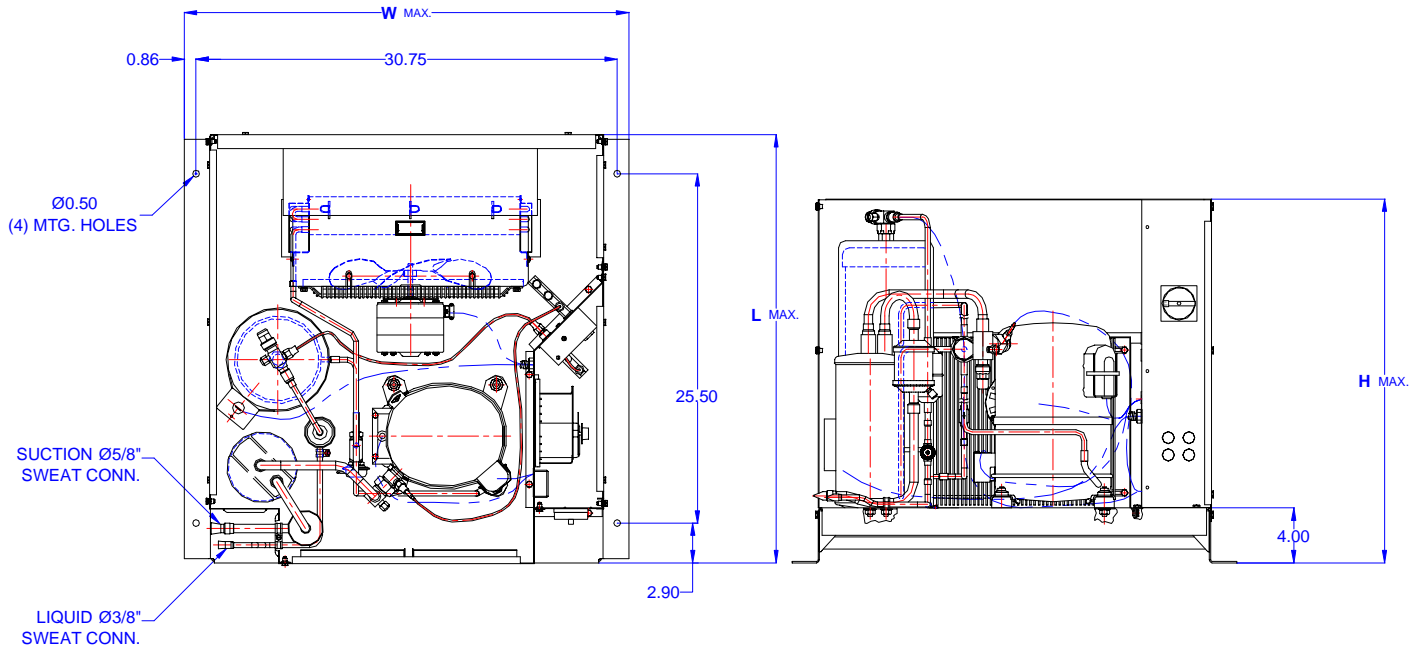
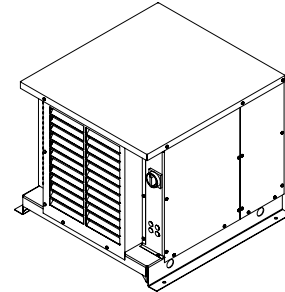
# TECUMSEH HERMETIC CONDENSING UNIT

AWA2448ZXDHL  
TPC\_\_rev 02  
February 27, 2004

**Model**                    **AWA2448ZXDHL**  
**BOM**                      **2K1118-2E**  


---

**Air Cooled**            **1 HP**  
**Application**          **Low Temp**  
**Refrigerant**          **R404A**



Model	Dimensions (inch)			Line connections		Pumpdown	Air flow	Oil Ch.	Gross weight
	L	W	H	Suction	Liquid	90% @ 90°F	SCFM	Oz.	Lbs.
<b>AWA2448ZXDHL</b>	31.50	32.50	26.75	5/8 Sweat	3/8 Sweat	20.15	1600	38	200

Factory charge 20 psig dry air, **MUST BE EVACUATED**

Evaporator		Ambient Temperatures															
		85°F				90°F				100°F				110°F			
°F	Psig	BTUH	Watts	Head	Cond T	BTUH	Watts	Head	Cond T	BTUH	Watts	Head	Cond T	BTUH	Watts	Head	Cond T
-40	5.5	1606	951	216	93	1388	948	228	97	871	876	261	106	455	856	290	114
-35	8.0	2134	1021	218	94	1888	1017	232	98	1358	956	264	107	901	941	295	115
-30	10.7	2693	1096	225	95	2418	1091	237	100	1862	1040	269	108	1359	1029	301	117
-25	14.0	3284	1176	231	97	2978	1171	243	101	2384	1128	275	110	1831	1120	308	119
-20	17.1	3907	1261	239	99	3568	1256	250	103	2922	1219	282	111	2316	1215	316	120
-15	19.3	4561	1350	246	102	4188	1347	259	106	3478	1314	290	114	2814	1312	324	122
<b>-10</b>	<b>24.5</b>	<b>5246</b>	<b>1445</b>	<b>257</b>	<b>105</b>	<b>4838</b>	<b>1444</b>	<b>269</b>	<b>108</b>	<b>4051</b>	<b>1413</b>	<b>300</b>	<b>116</b>	<b>3325</b>	<b>1413</b>	<b>334</b>	<b>124</b>
-5	28.8	5962	1545	265	108	5517	1545	280	111	4641	1515	311	119	3848	1516	345	127
0	33.5	6711	1649	277	110	6227	1653	292	114	5249	1622	324	121	4385	1623	356	129
5	36.5	7491	1758	289	114	6966	1765	306	117	5874	1732	337	125	4935	1733	368	132
10	43.7	8303	1873	306	117	7736	1883	321	120	6516	1846	352	128	5497	1846	382	135

Performance @ 60 Hz, Return Gas Temperature 65°F, --- SubCooling 5°F

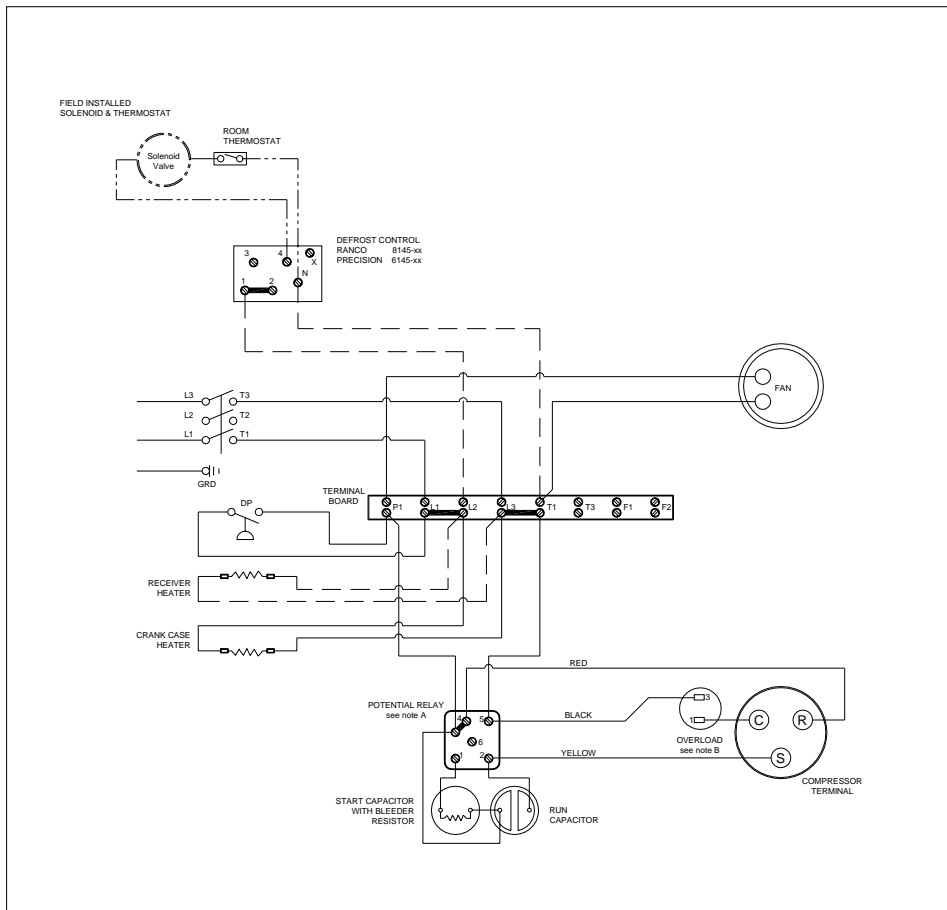
Parts/Specifications

STANDARD		OPTIONAL	
Unit BOM	2K1118-2E	Fan Motor	810S037B01
Unit MODEL	AWA2448ZXDHL	Fan Motor Qty	1
		Fan Motor RLA	1.1
Refrigeration RANGE	-40F TO +10F	Fan Blade	51563
Design Pressure Low	181	Fan Guard	71062
Design Pressure High	450	Shroud	70736-1
Volts - HZ - Ph	208-230-60-1		
Voltage Range	253 - 197	High Pressure switch	
Min. Circuit Ampacity	12	Low Pressure Control	
Max. Fuse Size	15	Dual Pressure Control	84087
Compressor MODEL	AWA2440ZXD	Condenser	50802-6
Compressor BOM	AW610ET-111-A2	Head Master Valve	LAC-4-215-3/8
Compressor LRA	73	Check Valve	CV-020-1011
Compressor RLA	8.7	Process Valve	
		Liquid Valve	31590
OverLoad	Internal	Suction Valve	31531-1
Relay	820ARR3J50		
Run Capacitor	85PR370F17	Receiver	51082-2
Run Capacitor Rating	35MFD 370V(M)VDE	Receiver Qty	1
Start Capacitor	85PS330D17	Accumulator	TK00042000
Start Capacitor Rating	145-175 MFD 330V	Liquid Filter	5200-083D
Contactor		Sight Glass	SG-06D
		Suction Filter	WSF-5S
Unit Drawing	DGU1918-11KE		
Wiring no Fan controls	WD21-1T1	CrankCase Heater	91022-1

BOM INDEX DESCRIPTION

2xYYYY- 2ERA(F)TnDS

- E Enclosure
- R Receiver Heater
- A Adjustable fan control
- F Fixed fan Control
- T1 Defrost timer option
- T2 Defrost timer & Defrost Heaters Contactor
- D Disconnect
- S Solenoid liquid Valve (supplied loose)



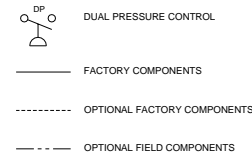
NOTES

FIELD WIRING NOTES

- ALL FIELD WIRING MUST BE DONE IN COMPLIANCE WITH ALL APPLICABLE LOCAL AND NATIONAL CODES.
- CONNECT INCOMING POWER LEADS FROM POWER SUPPLY TO L1 AND L3 IN TERMINAL BOARD OR TO L1 AND L3 IN DISCONNECT SWITCH (IF PROVIDED). USE COPPER CONDUCTORS ONLY. (EMPLOYER DES CONDUCTEURS DE CUIVRE SEULEMENT.) PROVIDE EQUIPMENT GROUNDING CONDUCTOR. USE 75°C (MIN.) WIRING

GENERAL NOTES:

- A. WITH ANY T.P.Co. APPROVED START RELAY USED, CONNECT LEADS TO SAME NUMBERED TERMINALS REGARDLESS OF LOCATION
- B. COMPRESSOR MAY BE EQUIPPED WITH EITHER INTERNAL OR EXTERNAL OVERLOAD PROTECTOR. (DIAGRAM SHOWS AN EXTERNAL OVERLOAD) COMPRESSORS THAT ARE EQUIPPED WITH INTERNAL OVERLOAD ARE ALL "AG"-s, "AV"-s, "AW"-s AND SOME "AJ"-s. ALLOW TIME FOR RESET.



CONDENSING UNIT WIRING, 230V 60Hz 1 Ph, single fan  
T1 defrost option

REVISION MAY 23, 2003 **WD21-1T1**