



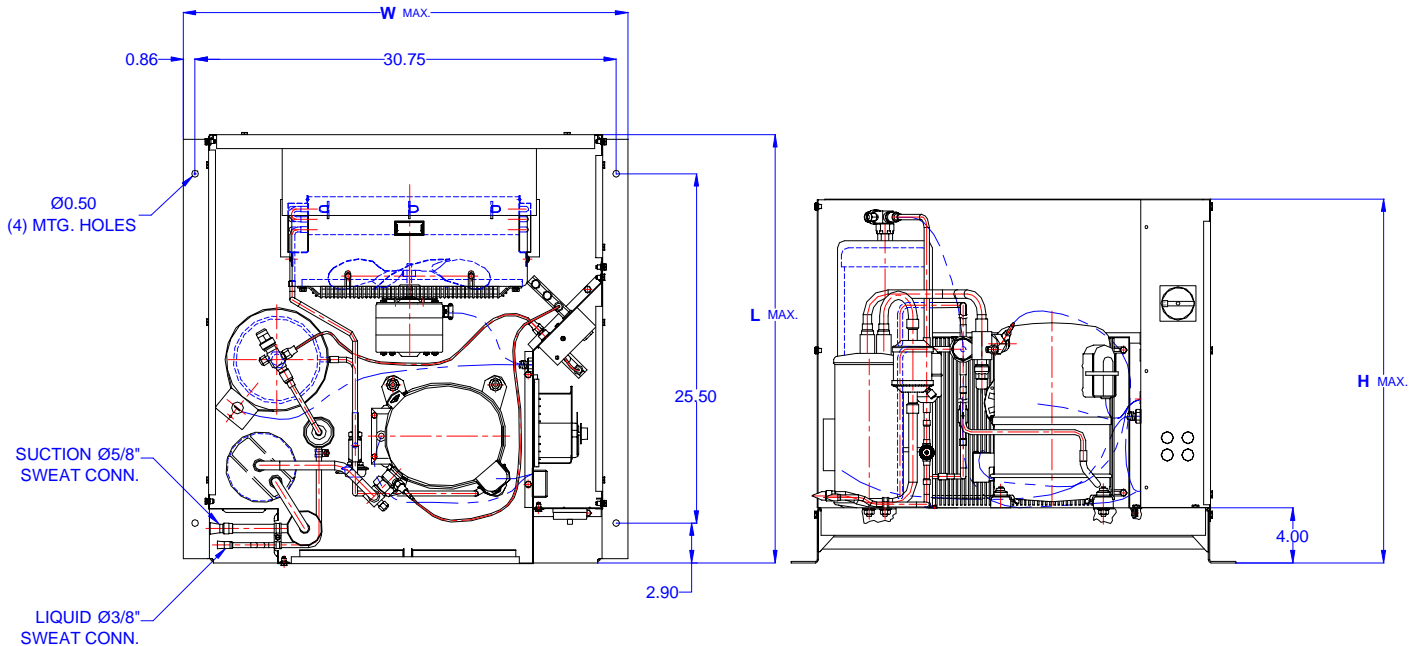
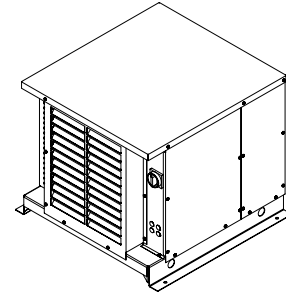
TECUMSEH HERMETIC CONDENSING UNIT



AWA2448ZXTHL
TPC__rev 02
February 27, 2004

Model **AWA2448ZXTHL**
BOM **2K1121-2E**

Air Cooled **1 HP**
Application **Low Temp**
Refrigerant **R404A**



Model	Dimensions (inch)			Line connections		Pumpdown	Air flow	Oil Ch.	Gross weight
	L	W	H	Suction	Liquid	90% @ 90°F	SCFM	Oz.	Lbs.
AWA2448ZXTHL	31.50	32.50	26.75	5/8 Sweat	3/8 Sweat	20.15	1600	38	200

Factory charge 20 psig dry air, **MUST BE EVACUATED**

Evaporator		Ambient Temperatures															
		85°F				90°F				100°F				110°F			
°F	Psig	BTUH	Watts	Head	Cond T	BTUH	Watts	Head	Cond T	BTUH	Watts	Head	Cond T	BTUH	Watts	Head	Cond T
-40	5.5	1606	951	216	93	1388	948	228	97	871	876	261	106	455	856	290	114
-35	8.0	2134	1021	218	94	1888	1017	232	98	1358	956	264	107	901	941	295	115
-30	10.7	2693	1096	225	95	2418	1091	237	100	1862	1040	269	108	1359	1029	301	117
-25	14.0	3284	1176	231	97	2978	1171	243	101	2384	1128	275	110	1831	1120	308	119
-20	17.1	3907	1261	239	99	3568	1256	250	103	2922	1219	282	111	2316	1215	316	120
-15	19.3	4561	1350	246	102	4188	1347	259	106	3478	1314	290	114	2814	1312	324	122
-10	24.5	5246	1445	257	105	4838	1444	269	108	4051	1413	300	116	3325	1413	334	124
-5	28.8	5962	1545	265	108	5517	1545	280	111	4641	1515	311	119	3848	1516	345	127
0	33.5	6711	1649	277	110	6227	1653	292	114	5249	1622	324	121	4385	1623	356	129
5	36.5	7491	1758	289	114	6966	1765	306	117	5874	1732	337	125	4935	1733	368	132
10	43.7	8303	1873	306	117	7736	1883	321	120	6516	1846	352	128	5497	1846	382	135

Performance @ 60 Hz, Return Gas Temperature 65°F, --- SubCooling 5°F

