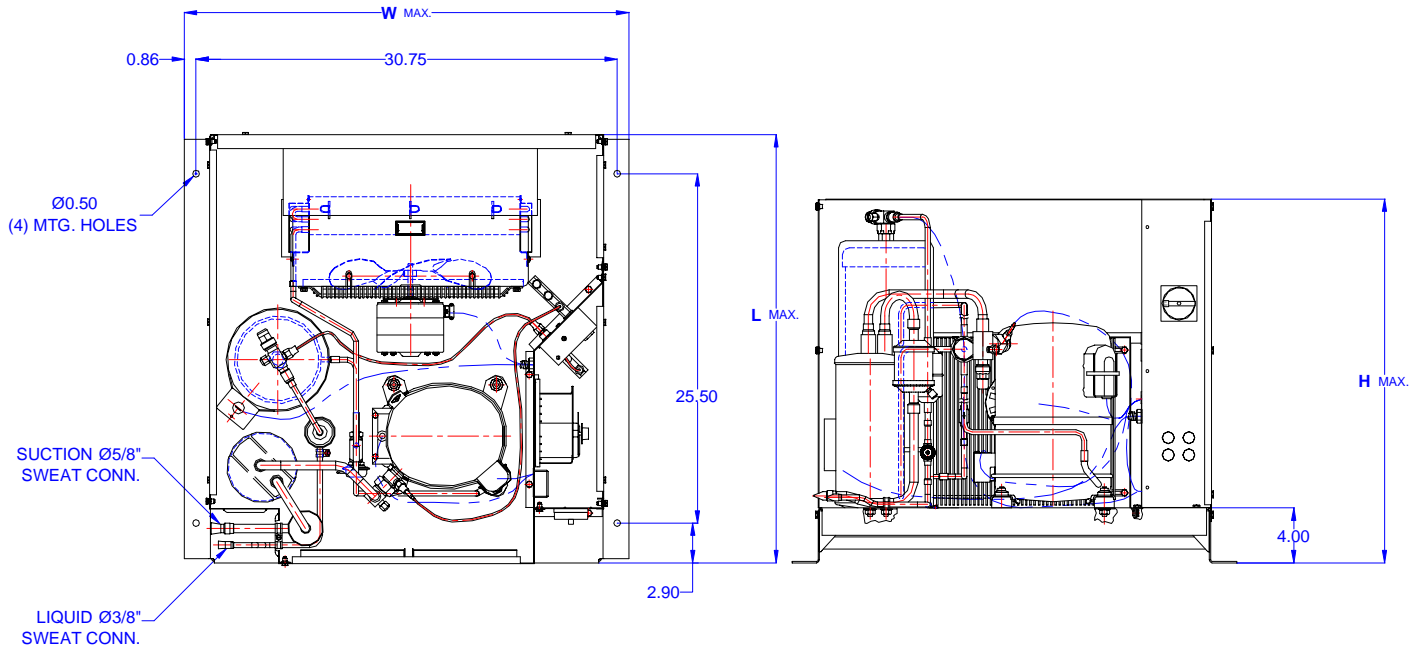
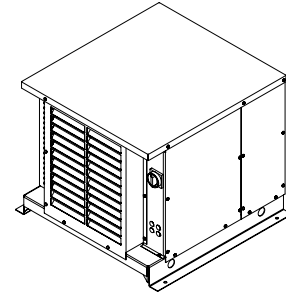




# TECUMSEH HERMETIC CONDENSING UNIT

AWA2464ZXTHL  
TPC\_\_rev 02  
February 27, 2004

**Model**                    **AWA2464ZXTHL**  
**BOM**                      **2K3225-2E**  
**Air Cooled**            **1 1/2 HP**  
**Application**         **Low Temp**  
**Refrigerant**         **R404A**



Model	Dimensions (inch)			Line connections		Pumpdown	Air flow	Oil Ch.	Gross weight
	L	W	H	Suction	Liquid	90% @ 90°F	SCFM	Oz.	Lbs.
<b>AWA2464ZXTHL</b>	31.50	32.50	26.75	5/8 Sweat	3/8 Sweat	20.15	1600	38	200

Factory charge 20 psig dry air, **MUST BE EVACUATED**

Evaporator		Ambient Temperatures															
		85°F				90°F				100°F				110°F			
°F	Psig	BTUH	Watts	Head	Cond T	BTUH	Watts	Head	Cond T	BTUH	Watts	Head	Cond T	BTUH	Watts	Head	Cond T
-40	5.5	2923	1198	227	96	2572	1129	242	100	1966	1065	274	110	1245	913	304	117
-35	8.0	3545	1268	234	99	3184	1211	250	103	2532	1150	282	112	1795	1026	313	119
-30	10.7	4187	1354	243	102	3810	1307	259	106	3103	1249	290	114	2339	1147	323	122
-25	14.0	4847	1456	252	104	4449	1416	269	108	3680	1361	300	116	2878	1277	334	125
-20	17.1	5526	1574	264	107	5102	1540	281	111	4263	1486	311	120	3413	1415	345	127
-15	19.3	6225	1707	276	111	5769	1676	293	115	4852	1625	323	121	3942	1562	358	130
<b>-10</b>	<b>24.5</b>	<b>6942</b>	<b>1857</b>	<b>290</b>	<b>114</b>	<b>6450</b>	<b>1827</b>	<b>307</b>	<b>118</b>	<b>5446</b>	<b>1778</b>	<b>337</b>	<b>125</b>	<b>4466</b>	<b>1716</b>	<b>371</b>	<b>133</b>
-5	28.8	7679	2023	305	117	7145	1992	321	121	6047	1944	352	128	4985	1880	385	136
0	33.5	8435	2204	321	121	7854	2170	337	125	6653	2123	368	132	5499	2051	401	140
5	36.5	9209	2401	338	125	8576	2362	354	129	7264	2316	385	136	6008	2231	417	142
10	43.7	10003	2614	357	129	9313	2567	372	133	7882	2522	404	140	6512	2419	434	145

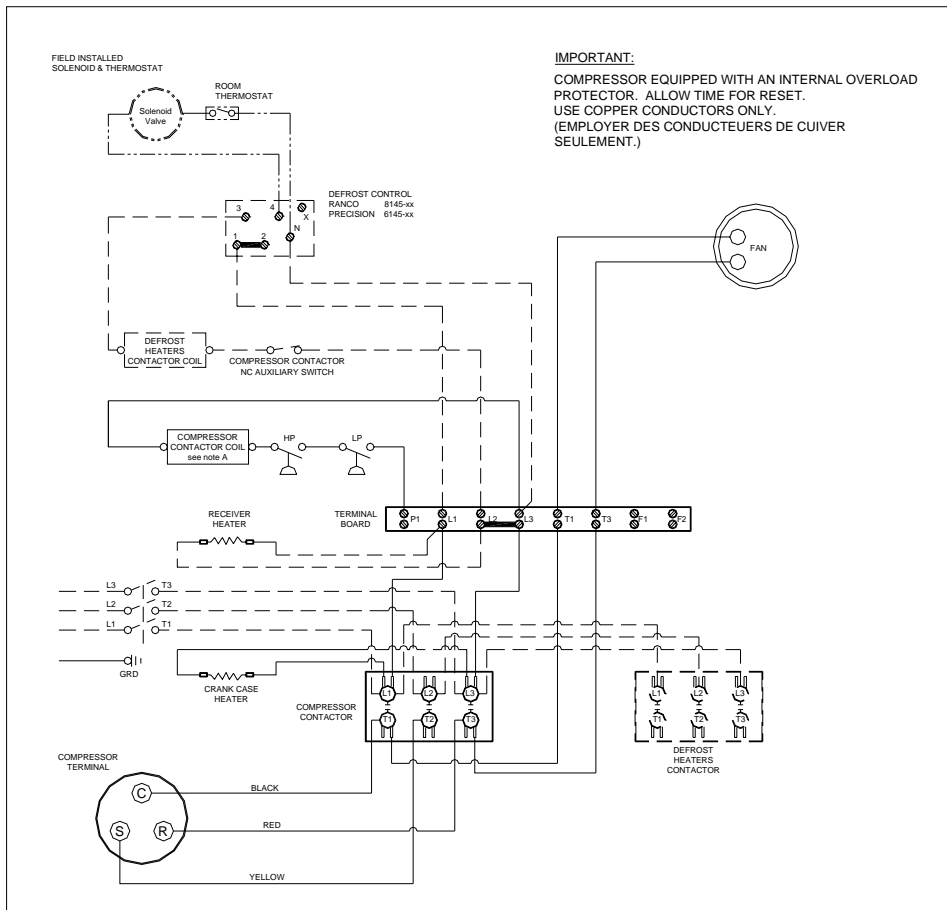
Performance @ 60 Hz, Return Gas Temperature 65°F, --- SubCooling 5°F

Parts/Specifications

STANDARD		OPTIONAL	
Unit BOM	2K3225-2E	Fan Motor	810S037B01
Unit MODEL	AWA2464ZXTHL	Fan Motor Qty	1
		Fan Motor RLA	1.1
Refrigeration RANGE	-40F TO +10F	Fan Blade	51563
Design Pressure Low	181	Fan Guard	71062
Design Pressure High	450	Shroud	70736-1
Volts - HZ - Ph	200-230-60-3		
Voltage Range	253 - 180	High Pressure switch	84097-3
Min. Circuit Ampacity	11.6	Low Pressure Control	84026-D
Max. Fuse Size	20	Dual Pressure Control	
		Condenser	50802-6
Compressor MODEL	AWA2460ZXT	Head Master Valve	LAC-4-215-3/8
Compressor BOM	AW613RT-121-A2	Check Valve	CV-020-1011
Compressor LRA	63.4	Process Valve	
Compressor RLA	8.4	Liquid Valve	31590
OverLoad	Internal	Suction Valve	31531-1
Relay			
Run Capacitor		Receiver	51082-2
Run Capacitor Rating		Receiver Qty	1
Start Capacitor		Accumulator	TK00042000
Start Capacitor Rating		Liquid Filter	5200-083D
Contactor	91014	Sight Glass	SG-06D
		Suction Filter	WSF-5S
Unit Drawing	DGU1918-12KE		
Wiring no Fan controls	WD23-1T2	CrankCase Heater	91022-1

BOM INDEX DESCRIPTION	
<b>2xYYYY- 2ERA(F)TnDS</b>	
E	Enclosure
R	Receiver Heater
A	Adjustable fan control
F	Fixed fan Control
T1	Defrost timer option
T2	Sight Defrost timer & Defrost Heaters Contactor
D	Disconnect
S	Solenoid liquid Valve (supplied loose)



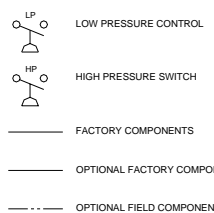
**IMPORTANT:**  
 COMPRESSOR EQUIPPED WITH AN INTERNAL OVERLOAD PROTECTOR. ALLOW TIME FOR RESET. USE COPPER CONDUCTORS ONLY. (EMPLOYER DES CONDUCTEURS DE CUIVRE SEULEMENT.)

NOTES

- FIELD WIRING NOTES**
- ALL FIELD WIRING MUST BE DONE IN COMPLIANCE WITH ALL APPLICABLE LOCAL AND NATIONAL CODES.
  - CONNECT INCOMING POWER LEADS FROM POWER SUPPLY TO L1, L2, AND L3 IN COMPRESSOR CONTACTOR OR TO L1, L2 AND L3 IN DISCONNECT SWITCH (IF PROVIDED). USE COPPER CONDUCTORS ONLY. (EMPLOYER DES CONDUCTEURS DE CUIVRE SEULEMENT.) PROVIDE EQUIPMENT GROUNDING CONDUCTOR. USE 75°C (MIN.) WIRING
  - PLACE JUMPER ACROSS P1 AND L1 IN TERMINAL BOARD IF NO OTHER CONTROLLING DEVICE IS INSTALLED.
  - DEFROST HEATERS LOADS SHOULD NOT BE HIGHER THEN THE MAXIMUM HEATERS LOAD. INDICATED ON THE UNIT LABEL.

**GENERAL NOTES:**

A. CONTACTOR COIL CIRCUIT IS FACTORY CONNECTED TO 230 V SOURCE IN PANEL AS SHOWN.  
 B. COMPRESSOR EQUIPPED WITH AN INTERNAL OVERLOAD PROTECTOR. ALLOW TIME FOR RESET.



CONDENSING UNIT WIRING, 230V 60Hz 3 Ph, Single fan  
 T1 & T2 defrost options

**A** | MAY 23, 2003 | **WD23-1T2**  
 REVISION