



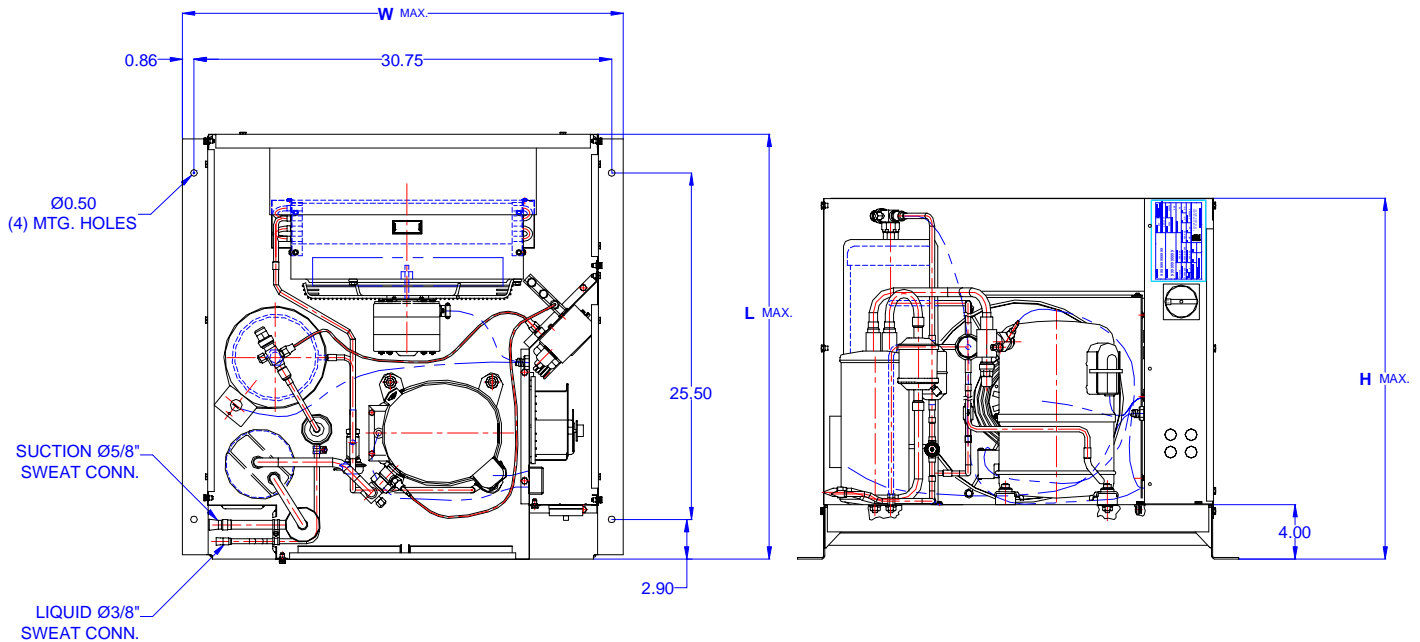
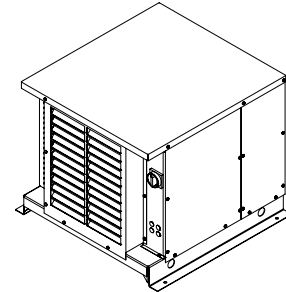
# TECUMSEH HERMETIC CONDENSING UNIT

AWA2479ZXDHL  
TPC\_\_rev 02  
February 27, 2004

**Model**                    **AWA2479ZXDHL**  
**BOM**                      **2K2114-2E**

---

**Air Cooled**            **2 HP**  
**Application**         **Low Temp**  
**Refrigerant**         **R404A**



Model	Dimensions (inch)			Line connections		Pumpdown	Air flow	Oil Ch.	Gross weight
	L	W	H	Suction	Liquid	90% @ 90°F	SCFM	Oz.	Lbs.
<b>AWA2479ZXDHL</b>	31.50	32.50	26.75	5/8 Sweat	3/8 Sweat	20.72	1530	38	200

Factory charge 20 psig dry air, **MUST BE EVACUATED**

Evaporator		Ambient Temperatures															
		85°F				90°F				100°F				110°F			
°F	Psig	BTUH	Watts	Head	Cond T	BTUH	Watts	Head	Cond T	BTUH	Watts	Head	Cond T	BTUH	Watts	Head	Cond T
-40	5.5	2562	1095	215	92	2337	1072	224	96	2264	1122	260	106	1739	1058	290	114
-35	8.0	3481	1233	220	94	3196	1207	230	98	2892	1226	264	108	2269	1161	296	115
-30	10.7	4424	1374	226	96	4080	1346	236	100	3561	1339	270	110	2838	1274	303	118
-25	14.0	5394	1517	233	97	4990	1489	243	101	4271	1463	276	112	3446	1400	310	119
-20	17.1	6387	1664	241	100	5925	1636	251	104	5022	1596	283	113	4093	1536	318	121
-15	19.3	7405	1813	249	103	6885	1786	259	107	5814	1740	292	115	4779	1684	327	123
<b>-10</b>	<b>24.5</b>	<b>8450</b>	<b>1965</b>	<b>259</b>	<b>104</b>	<b>7871</b>	<b>1940</b>	<b>269</b>	<b>108</b>	<b>6648</b>	<b>1893</b>	<b>301</b>	<b>117</b>	<b>5504</b>	<b>1843</b>	<b>337</b>	<b>125</b>
-5	28.8	9518	2119	270	110	8882	2098	279	111	7523	2057	312	119	6268	2014	347	127
0	33.5	10611	2277	282	113	9918	2260	291	114	8439	2230	324	122	7071	2196	359	130
5	36.5	11730	2436	294	114	10980	2425	303	117	9396	2414	336	125	7912	2390	371	133
10	43.7	12874	2599	308	117	12067	2595	316	120	10394	2607	350	128	8793	2595	384	136

Performance @ 60 Hz, Return Gas Temperature 40°F, --- SubCooling 5°F

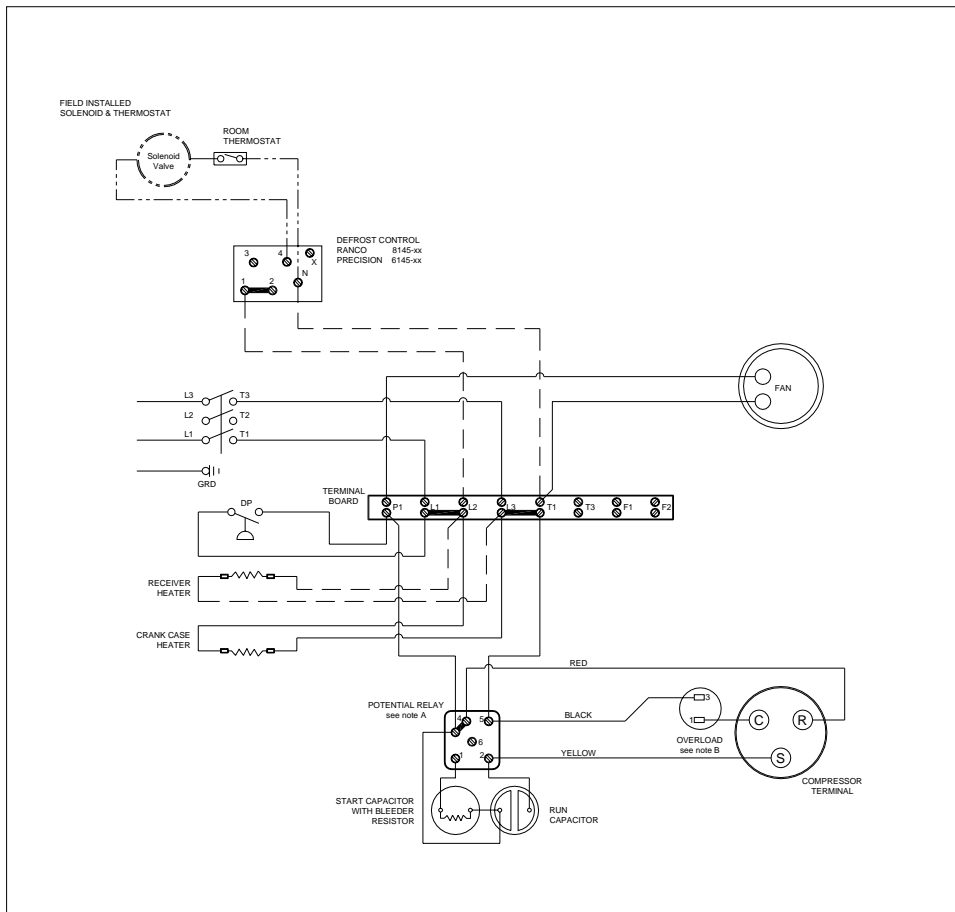
Parts/Specifications

STANDARD		OPTIONAL	
Unit BOM	2K2114-2E	Fan Motor	810S050A99
Unit MODEL	AWA2479ZXDHL	Fan Motor Qty	1
		Fan Motor RLA	1.3
Refrigeration RANGE	-40F TO +10F	Fan Blade	51568
Design Pressure Low	181	Fan Guard	70831
Design Pressure High	450	Shroud	70727-2
Volts - HZ - Ph	208-230-60-1		
Voltage Range	253 - 197	High Pressure switch	
Min. Circuit Ampacity	17.1	Low Pressure Control	
Max. Fuse Size	25	Dual Pressure Control	84087
Compressor MODEL	AWA2460ZXD	Condenser	50857-1
Compressor BOM	AW613ET-111-A2	Head Master Valve	LAC-4-215-3/8
Compressor LRA	86	Check Valve	CV-020-1011
Compressor RLA	12.6	Process Valve	
		Liquid Valve	31590
OverLoad	Internal	Suction Valve	31531-1
Relay	820ARR3J50		
Run Capacitor	85PR370F21	Receiver	51082-2
Run Capacitor Rating	45MFD 370V(M)VDE	Receiver Qty	1
Start Capacitor	85PS330D17	Accumulator	TK00042000
Start Capacitor Rating	145-175 MFD 330V	Liquid Filter	5200-083D
Contactors		Sight Glass	SG-06D
		Suction Filter	WSF-5S
Unit Drawing	DGU1918-KE		
Wiring no Fan controls	WD21-1T1	CrankCase Heater	91022-1

BOM INDEX DESCRIPTION

2xYYYY- 2ERA(F)TnDS

- E Enclosure
- R Receiver Heater
- A Adjustable fan control
- F Fixed fan Control
- T1 Defrost timer option
- T2 Defrost timer & Defrost Heaters Contactor
- D Disconnect
- S Solenoid liquid Valve (supplied loose)



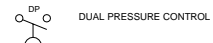
NOTES

FIELD WIRING NOTES

- ALL FIELD WIRING MUST BE DONE IN COMPLIANCE WITH ALL APPLICABLE LOCAL AND NATIONAL CODES.
- CONNECT INCOMING POWER LEADS FROM POWER SUPPLY TO L1 AND L3 IN TERMINAL BOARD OR TO L1 AND L3 IN DISCONNECT SWITCH (IF PROVIDED). USE COPPER CONDUCTORS ONLY. (EMPLOYER DES CONDUCTEURS DE CUIVRE SEULEMENT.) PROVIDE EQUIPMENT GROUNDING CONDUCTOR. USE 75°C (MIN.) WIRING

GENERAL NOTES:

- A. WITH ANY T.P.Co. APPROVED START RELAY USED, CONNECT LEADS TO SAME NUMBERED TERMINALS REGARDLESS OF LOCATION
- B. COMPRESSOR MAY BE EQUIPPED WITH EITHER INTERNAL OR EXTERNAL OVERLOAD PROTECTOR. (DIAGRAM SHOWS AN EXTERNAL OVERLOAD) COMPRESSORS THAT ARE EQUIPPED WITH INTERNAL OVERLOAD ARE ALL "AG"-s, "AV"-s, "AW"-s AND SOME "AJ"-s. ALLOW TIME FOR RESET.



- FACTORY COMPONENTS
- OPTIONAL FACTORY COMPONENTS
- OPTIONAL FIELD COMPONENTS

CONDENSING UNIT WIRING, 230V 60Hz 1 Ph, single fan  
T1 defrost option

REVISION **A** MAY 23, 2003 **WD21-1T1**