

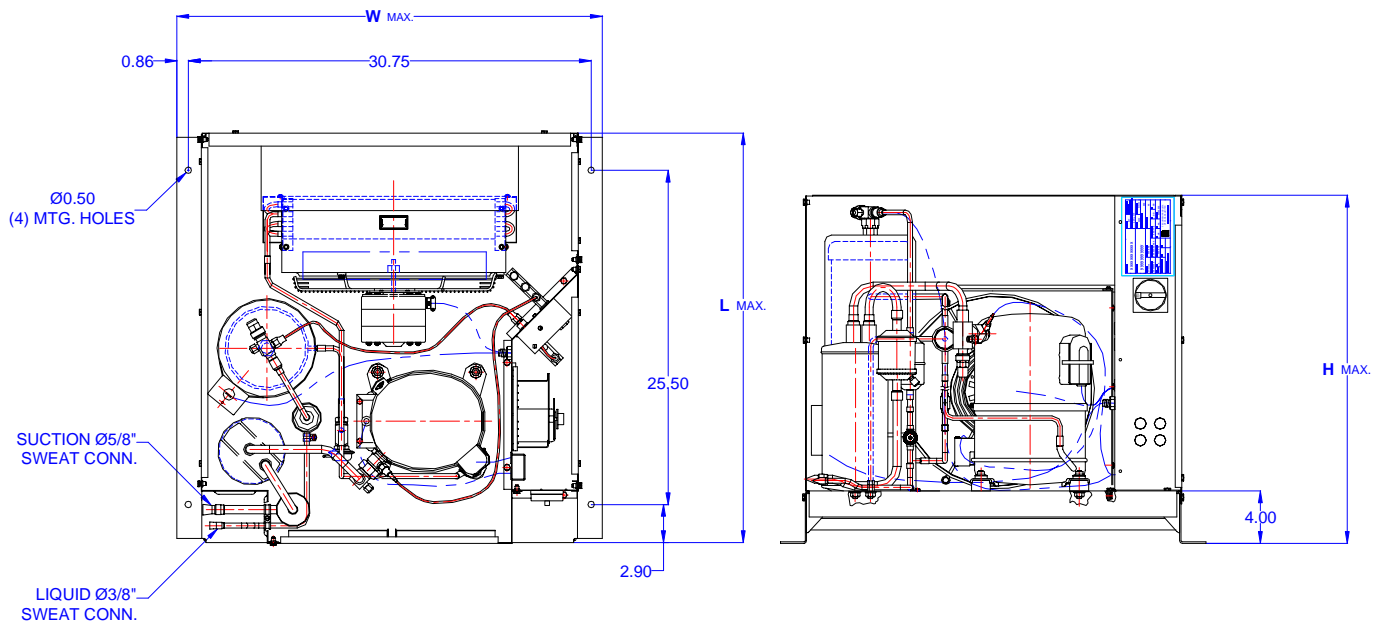
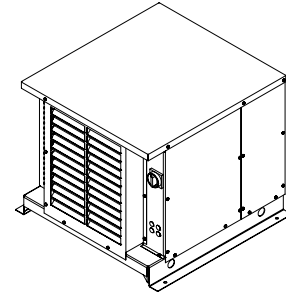


TECUMSEH HERMETIC CONDENSING UNIT

AWA2479ZXTHL
TPC__rev 02
February 27, 2004

Model **AWA2479ZXTHL**
BOM **2K2115-2E**

Air Cooled **2 HP**
Application **Low Temp**
Refrigerant **R404A**



Model	Dimensions (inch)			Line connections		Pumpdown	Air flow	Oil Ch.	Gross weight
	L	W	H	Suction	Liquid	90% @ 90°F	SCFM	Oz.	Lbs.
AWA2479ZXTHL	31.50	32.50	26.75	5/8 Sweat	3/8 Sweat	20.72	1530	38	200

Factory charge 20 psig dry air, **MUST BE EVACUATED**

Evaporator		Ambient Temperatures															
		85°F				90°F				100°F				110°F			
°F	Psig	BTUH	Watts	Head	Cond T	BTUH	Watts	Head	Cond T	BTUH	Watts	Head	Cond T	BTUH	Watts	Head	Cond T
-40	5.5	2562	1095	215	92	2337	1072	224	96	2264	1122	260	106	1739	1058	290	114
-35	8.0	3481	1233	220	94	3196	1207	230	98	2892	1226	264	108	2269	1161	296	115
-30	10.7	4424	1374	226	96	4080	1346	236	100	3561	1339	270	110	2838	1274	303	118
-25	14.0	5394	1517	233	97	4990	1489	243	101	4271	1463	276	112	3446	1400	310	119
-20	17.1	6387	1664	241	100	5925	1636	251	104	5022	1596	283	113	4093	1536	318	121
-15	19.3	7405	1813	249	103	6885	1786	259	107	5814	1740	292	115	4779	1684	327	123
-10	24.5	8450	1965	259	104	7871	1940	269	108	6648	1893	301	117	5504	1843	337	125
-5	28.8	9518	2119	270	110	8882	2098	279	111	7523	2057	312	119	6268	2014	347	127
0	33.5	10611	2277	282	113	9918	2260	291	114	8439	2230	324	122	7071	2196	359	130
5	36.5	11730	2436	294	114	10980	2425	303	117	9396	2414	336	125	7912	2390	371	133
10	43.7	12874	2599	308	117	12067	2595	316	120	10394	2607	350	128	8793	2595	384	136

Performance @ 60 Hz, Return Gas Temperature 40°F, --- SubCooling 5°F

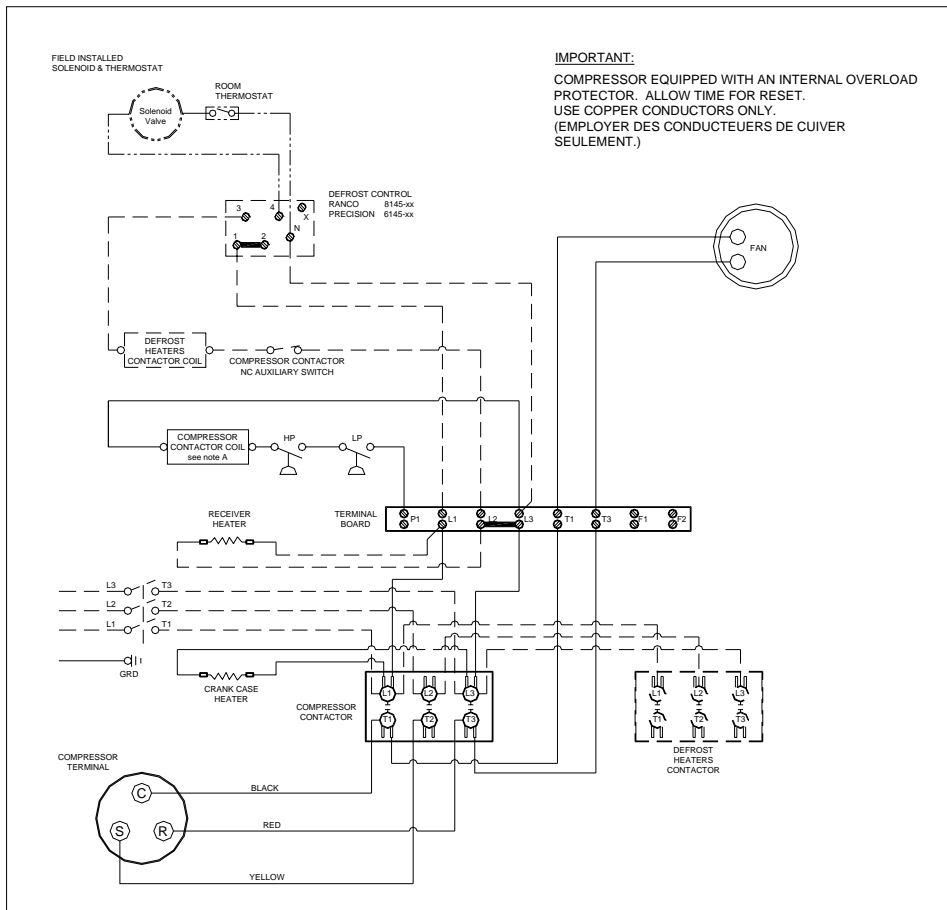
Parts/Specifications

STANDARD		OPTIONAL	
Unit BOM	2K2115-2E	Fan Motor	810S050A99
Unit MODEL	AWA2479ZXTHL	Fan Motor Qty	1
Refrigeration RANGE	-40F TO +10F	Fan Motor RLA	1.3
Design Pressure Low	181	Fan Blade	51568
Design Pressure High	450	Fan Guard	70831
Volts - HZ - Ph	200-230-60-3	Shroud	70727-2
Voltage Range	253 - 180	High Pressure switch	84097-3
Min. Circuit Ampacity	11.8	Low Pressure Control	84026-D
Max. Fuse Size	20	Dual Pressure Control	
Compressor MODEL	AWA2460ZXT	Condenser	50857-1
Compressor BOM	AW613RT-121-A2	Head Master Valve	LAC-4-215-3/8
Compressor LRA	63.4	Check Valve	CV-020-1011
Compressor RLA	8.4	Process Valve	
OverLoad	Internal	Liquid Valve	31590
Relay		Suction Valve	31531-1
Run Capacitor		Receiver	51082-2
Run Capacitor Rating		Receiver Qty	1
Start Capacitor		Accumulator	TK00042000
Start Capacitor Rating		Liquid Filter	5200-083D
Contactor	91014	Sight Glass	SG-06D
Unit Drawing	DGU1918-3KE	Suction Filter	WSF-5S
Wiring no Fan controls	WD23-1T2	CrankCase Heater	91022-1

BOM INDEX DESCRIPTION

2xYYYY- 2ERA(F)TnDS

- E Enclosure
- R Receiver Heater
- A Adjustable fan control
- F Fixed fan Control
- T1 Defrost timer option
- T2 Sight Defrost timer & Defrost Heaters Contactor
- D Disconnect
- S Solenoid liquid Valve (supplied loose)



NOTES

FIELD WIRING NOTES

- ALL FIELD WIRING MUST BE DONE IN COMPLIANCE WITH ALL APPLICABLE LOCAL AND NATIONAL CODES.
- CONNECT INCOMING POWER LEADS FROM POWER SUPPLY TO L1, L2, AND L3 IN COMPRESSOR CONTACTOR OR TO L1, L2 AND L3 IN DISCONNECT SWITCH (IF PROVIDED). USE COPPER CONDUCTORS ONLY. (EMPLOYER DES CONDUCTEURS DE CUIVRE SEULEMENT.) PROVIDE EQUIPMENT GROUNDING CONDUCTOR. USE 75°C (MIN.) WIRING
- PLACE JUMPER ACROSS P1 AND L1 IN TERMINAL BOARD IF NO OTHER CONTROLLING DEVICE IS INSTALLED.
- DEFROST HEATERS LOADS SHOULD NOT BE HIGHER THEN THE MAXIMUM HEATERS LOAD. INDICATED ON THE UNIT LABEL.

GENERAL NOTES:

- CONTACTOR COIL CIRCUIT IS FACTORY CONNECTED TO 230 V SOURCE IN PANEL AS SHOWN.
- COMPRESSOR EQUIPPED WITH AN INTERNAL OVERLOAD PROTECTOR. ALLOW TIME FOR RESET.

LP LOW PRESSURE CONTROL

HP HIGH PRESSURE SWITCH

FACTORY COMPONENTS

OPTIONAL FACTORY COMPONENTS

OPTIONAL FIELD COMPONENTS

CONDENSING UNIT WIRING, 230V 60Hz 3 Ph, Single fan
 T1 & T2 defrost options

A
 REVISION

MAY 23, 2003

WD23-1T2