



# TECUMSEH HERMETIC CONDENSING UNIT

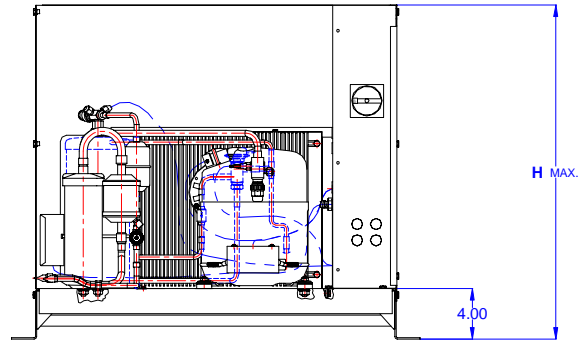
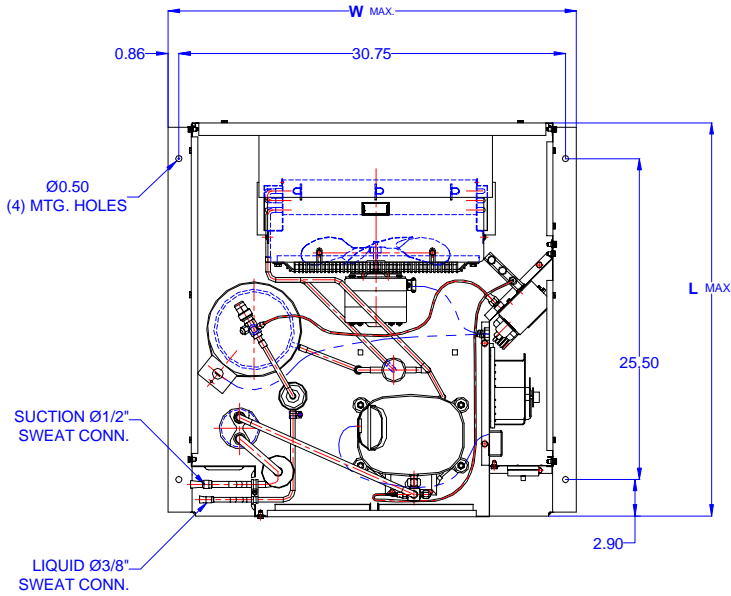
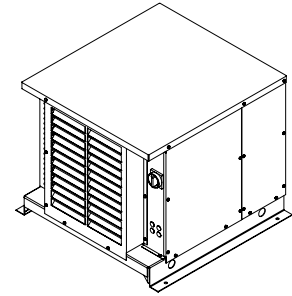


AJA9486EXDHL  
TPC\_\_rev 02  
February 27, 2004

**Model** AJA9486EXDHL  
**BOM** 2K1183-2E

---

**Air Cooled** 1 HP  
**Application** Medium Temp  
**Refrigerant** R 22



Model	Dimensions (inch)			Line connections		Pumpdown	Air flow	Oil Ch.	Gross weight
	L	W	H	Suction	Liquid	90% @ 90°F	SCFM	Oz.	Lbs.
<b>AJA9486EXDHL</b>	31.50	32.50	26.75	1/2 Sweat	3/8 Sweat	10.60	600	22	190

Factory charge 20 psig dry air, **MUST BE EVACUATED**

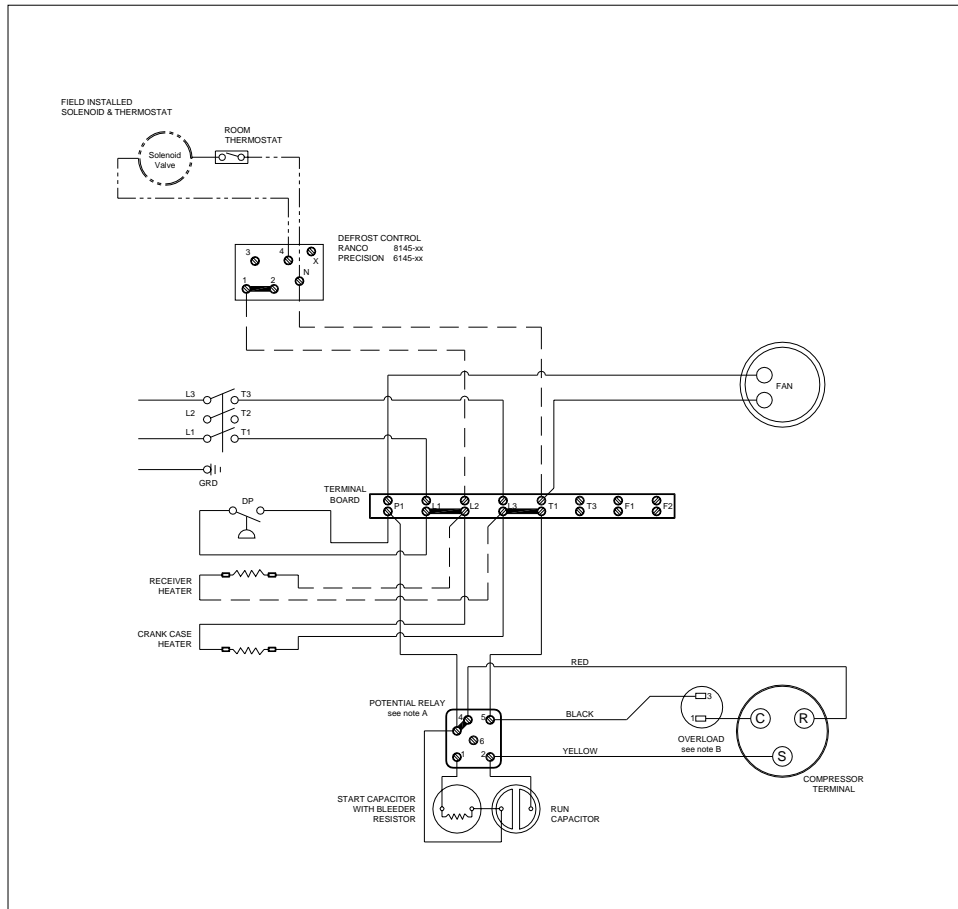
Evaporator	Ambient Temperatures																
	85°F					90°F					100°F				110°F		
°F	Psig	BTUH	Watts	Head	Cond T	BTUH	Watts	Head	Cond T	BTUH	Watts	Head	Cond T	BTUH	Watts	Head	Cond T
-10	16.5	3810	1000	203	102	3600	1010	210	104	---	---	---	---	---	---	---	---
-5	20.0	4560	1080	208	103	4300	1090	215	105	3700	1100	230	110	---	---	---	---
0	24.0	5360	1160	210	104	5100	1170	220	107	4500	1190	235	111	---	---	---	---
5	28.2	6170	1240	215	105	5900	1250	225	108	5200	1270	245	114	4700	1300	265	121
10	32.8	7110	1320	225	108	6800	1330	235	111	6100	1360	255	117	5500	1390	275	123
15	37.7	8020	1410	235	111	7700	1420	245	114	6900	1450	260	120	6300	1480	280	124
<b>20</b>	<b>43.0</b>	<b>8960</b>	<b>1480</b>	<b>236</b>	<b>112</b>	<b>8600</b>	<b>1500</b>	<b>250</b>	<b>117</b>	<b>7800</b>	<b>1530</b>	<b>270</b>	<b>121</b>	<b>7100</b>	<b>1570</b>	<b>300</b>	<b>130</b>
25	48.8	9870	1560	246	115	9500	1580	260	119	8600	1620	280	124	7900	1670	310	132
30	54.8	10770	1650	255	117	10400	1670	270	122	9500	1710	295	129	8800	1760	325	136
35	61.5	11810	1740	265	121	11400	1760	280	124	10500	1810	310	132	9700	1860	340	139
40	68.5	12820	1820	278	125	12400	1850	295	129	11400	1910	320	135	10600	1960	355	143
45	76.0	13830	1920	288	127	13400	1950	305	130	12300	2010	335	140	11500	2070	370	146

Performance @ 60 Hz ; Return Gas Temperature 20°F max superheat above 20°F evap, 40°F max below 20°F evap ; --- SubCooling 5°F

Parts/Specifications			
STANDARD		OPTIONAL	
Unit BOM	2K1183-2E	Fan Motor	810S037B01
Unit MODEL	AJA9486EXDHL	Fan Motor Qty	1
		Fan Motor RLA	1.1
Refrigeration RANGE	-10F TO +45F	Fan Blade	51563
Design Pressure Low	150	Fan Guard	71062
Design Pressure High	350	Shroud	70736-1
Volts - HZ - Ph	208-230-60-1		
Voltage Range	253 - 197	High Pressure switch	
Min. Circuit Ampacity	9.7	Low Pressure Control	
Max. Fuse Size	15	Dual Pressure Control	84066
Compressor MODEL	AJA9484EXD	Condenser	50802-6
Compressor BOM	AJ801ET-431-A2	Head Master Valve	LAC-4-180-3/8
Compressor LRA	54	Check Valve	CV-020-1011
Compressor RLA	6.9	Process Valve	
		Liquid Valve	31581-1
OverLoad	8300GRTL49	Suction Valve	31582-1
Relay	820ARR3C71		
Run Capacitor	85PR370F20	Receiver	51081-1
Run Capacitor Rating	25MFD 370V(M)VDE	Receiver Qty	1
Start Capacitor	85PS250B87	Accumulator	TK00014000
Start Capacitor Rating	216-259 MFD 250V	Liquid Filter	5200-083D
Contactors		Sight Glass	SG-06D
		Suction Filter	WSF-5S
Unit Drawing	DGU1893-36KE		
Wiring no Fan controls	WD21-1T1	CrankCase Heater	CH-102-40

BOM INDEX DESCRIPTION	
<b>2xYYYY- 2ERA(F)TnDS</b>	
E	Enclosure
R	Receiver Heater
A	Adjustable fan control
F	Fixed fan Control
T1	Defrost timer option
T2	Defrost timer & Defrost Heaters Contactor
D	Disconnect
S	Solenoid liquid Valve (supplied loose)



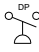


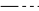
## NOTES

**FIELD WIRING NOTES**

- ALL FIELD WIRING MUST BE DONE IN COMPLIANCE WITH ALL APPLICABLE LOCAL AND NATIONAL CODES.
- CONNECT INCOMING POWER LEADS FROM POWER SUPPLY TO L1 AND L3 IN TERMINAL BOARD OR TO L1 AND L3 IN DISCONNECT SWITCH (IF PROVIDED). USE COPPER CONDUCTORS ONLY. (EMPLOYER DES CONDUCTEURS DE CUIVRE SEULEMENT.) PROVIDE EQUIPMENT GROUNDING CONDUCTOR. USE 75°C (MIN.) WIRING

**GENERAL NOTES:**

- WITH ANY T.P.Co. APPROVED START RELAY USED, CONNECT LEADS TO SAME NUMBERED TERMINALS REGARDLESS OF LOCATION
- COMPRESSOR MAY BE EQUIPPED WITH EITHER INTERNAL OR EXTERNAL OVERLOAD PROTECTOR. (DIAGRAM SHOWS AN EXTERNAL OVERLOAD) COMPRESSORS THAT ARE EQUIPPED WITH INTERNAL OVERLOAD ARE ALL "AG"-s, "AV"-s, "AW"-s AND SOME "AJ"-s. ALLOW TIME FOR RESET.

 DUAL PRESSURE CONTROL  
 FACTORY COMPONENTS  
 OPTIONAL FACTORY COMPONENTS  
 OPTIONAL FIELD COMPONENTS

CONDENSING UNIT WIRING, 230V 60Hz 1 Ph, single fan, T1 defrost option

<b>A</b>	REVISION MAY 23, 2003 <span style="font-size: 2em; font-weight: bold;">WD21-1T1</span>
REVISION	