


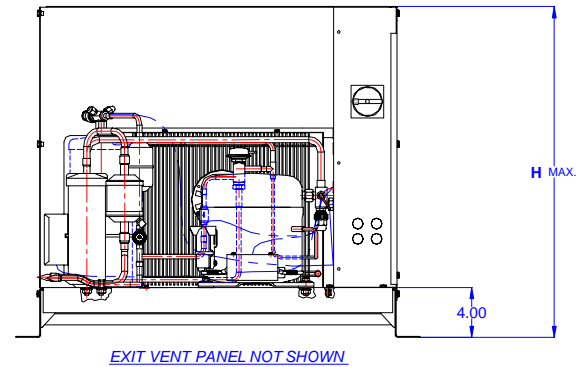
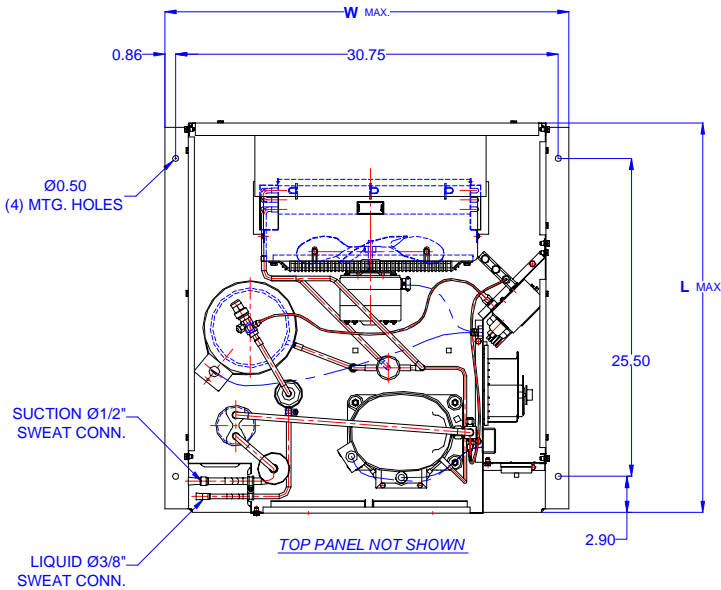
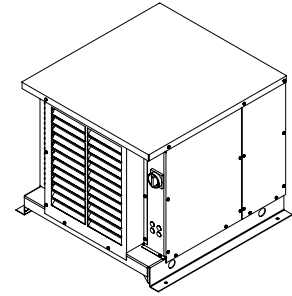


TECUMSEH HERMETIC CONDENSING UNIT


AKA9446EXDHL
TPC__rev 02
February 27, 2004

Model **AKA9446EXDHL**
BOM **2K209-2E**

Air Cooled **1/2 HP**
Application **Medium Temp**
Refrigerant **R 22**



Model	Dimensions (inch)			Line connections		Pumpdown	Air flow	Oil Ch.	Gross weight
	L	W	H	Suction	Liquid	90% @ 90°F	SCFM	Oz.	Lbs.
AKA9446EXDHL	31.50	32.50	26.75	1/2 Sweat	3/8 Sweat	10.60	600	15	190

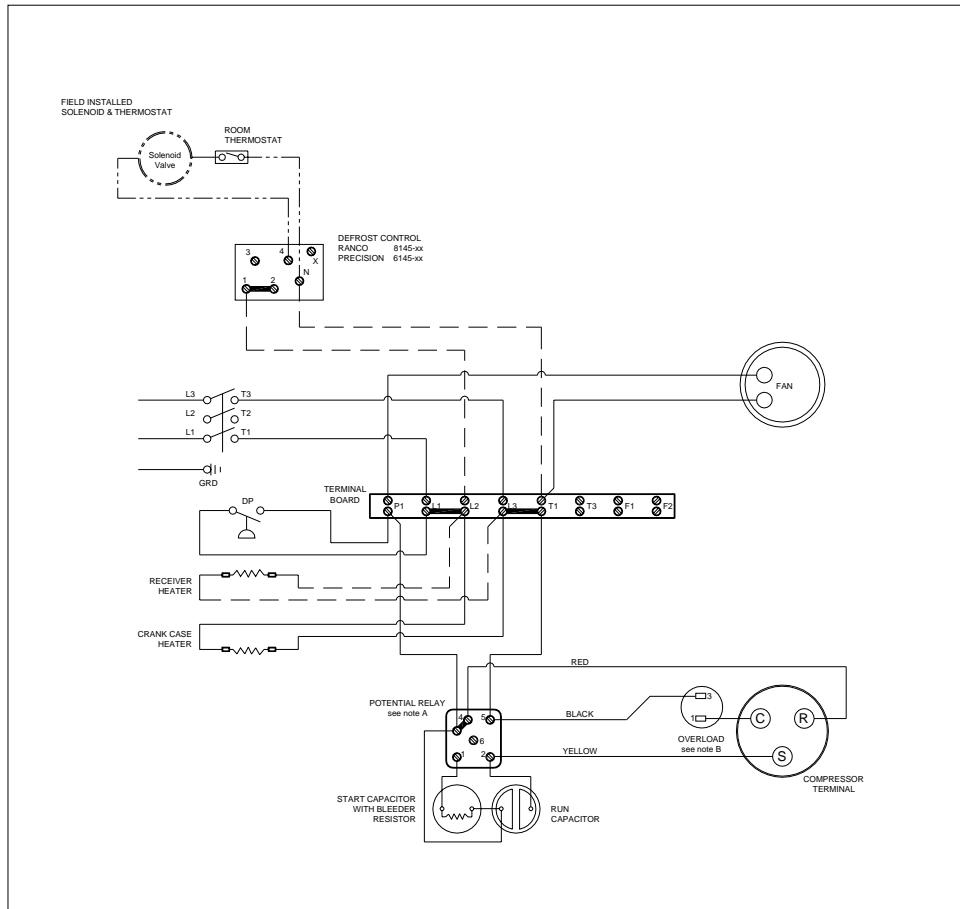
Factory charge 20 psig dry air, **MUST BE EVACUATED**

Evaporator	Ambient Temperatures																
	85°F					90°F					100°F				110°F		
°F	Psig	BTUH	Watts	Head	Cond T	BTUH	Watts	Head	Cond T	BTUH	Watts	Head	Cond T	BTUH	Watts	Head	Cond T
-10	16.5	2017	524	180	94	1800	510	195	99	1450	440	220	107	1400	525	255	117
-5	20.0	2400	568	185	96	2200	560	200	100	1800	540	225	108	1750	580	265	121
0	24.0	2821	605	195	99	2600	600	210	104	2200	590	235	111	2150	630	270	122
5	28.2	3275	623	202	101	3050	620	215	105	2600	640	245	114	2500	660	275	123
10	32.8	3742	690	210	104	3500	690	225	108	3100	690	250	116	2600	690	280	124
15	37.7	4279	728	218	106	4050	730	235	111	3550	735	260	119	3100	740	295	129
20	43.0	4850	774	230	110	4600	780	245	114	4100	780	275	123	3600	795	305	130
25	48.8	5404	813	238	112	5150	820	255	117	4600	835	285	126	4100	850	320	135
30	54.8	5933	858	248	116	5700	870	265	121	5150	890	295	129	4700	915	330	137
35	61.5	6558	906	263	120	6300	920	280	124	5700	940	310	132	5200	970	345	141
40	68.5	7175	950	273	122	6900	965	290	128	6350	1000	325	136	5800	1030	360	144
45	76.0	7950	1001	288	127	7600	1020	305	130	6900	1050	335	140	6200	1090	370	147

Performance @ 60 Hz ; Return Gas Temperature 20°F max superheat above 20°F evap, 40°F max below 20°F evap ; --- SubCooling 5°F

Parts/Specifications			
STANDARD		OPTIONAL	
Unit BOM	2K209-2E	Fan Motor	810S037B01
Unit MODEL	AKA9446EXDHL	Fan Motor Qty	1
		Fan Motor RLA	0.7
Refrigeration RANGE	-10F TO +45F	Fan Blade	51563
Design Pressure Low	150	Fan Guard	71062
Design Pressure High	350	Shroud	70736-1
Volts - HZ - Ph	208-230-60-1		
Voltage Range	253 - 197	High Pressure switch	
Min. Circuit Ampacity	6.1	Low Pressure Control	
Max. Fuse Size	15	Dual Pressure Control	84066
Compressor MODEL	AKA9442EXD	Condenser	50802-6
Compressor BOM	AK165ET-038-A2	Head Master Valve	LAC-4-180-3/8
Compressor LRA	31	Check Valve	CV-020-1011
Compressor RLA	4	Process Valve	
		Liquid Valve	31581-1
OverLoad	8300MRTG57	Suction Valve	31582-1
Relay	820ARR3C29		
Run Capacitor	85PR370E36	Receiver	51081-1
Run Capacitor Rating	15MFD 370V(M)VDE	Receiver Qty	1
Start Capacitor	85685	Accumulator	TK00013000
Start Capacitor Rating	72-88 MFD 330V	Liquid Filter	5200-083D
Contactor		Sight Glass	SG-06D
		Suction Filter	WSF-5S
Unit Drawing	DGU1909-17KE		
Wiring no Fan controls	WD21-1T1	CrankCase Heater	CH-135-40

BOM INDEX DESCRIPTION	
2xYYYY- 2ERA(F)TnDS	
E	Enclosure
R	Receiver Heater
A	Adjustable fan control
F	Fixed fan Control
T1	Defrost timer option
T2	Defrost timer & Defrost Heaters Contactor
D	Disconnect
S	Solenoid liquid Valve (supplied loose)



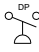



NOTES

FIELD WIRING NOTES

- ALL FIELD WIRING MUST BE DONE IN COMPLIANCE WITH ALL APPLICABLE LOCAL AND NATIONAL CODES.
- CONNECT INCOMING POWER LEADS FROM POWER SUPPLY TO L1 AND L3 IN TERMINAL BOARD OR TO L1 AND L3 IN DISCONNECT SWITCH (IF PROVIDED). USE COPPER CONDUCTORS ONLY. (EMPLOYER DES CONDUCTEURS DE CUIVRE SEULEMENT.) PROVIDE EQUIPMENT GROUNDING CONDUCTOR. USE 75°C (MIN.) WIRING

GENERAL NOTES:

- WITH ANY T.P.Co. APPROVED START RELAY USED, CONNECT LEADS TO SAME NUMBERED TERMINALS REGARDLESS OF LOCATION
- COMPRESSOR MAY BE EQUIPPED WITH EITHER INTERNAL OR EXTERNAL OVERLOAD PROTECTOR. (DIAGRAM SHOWS AN EXTERNAL OVERLOAD) COMPRESSORS THAT ARE EQUIPPED WITH INTERNAL OVERLOAD ARE ALL "AG"-s, "AV"-s, "AW"-s AND SOME "AJ"-s. ALLOW TIME FOR RESET.

 DUAL PRESSURE CONTROL
 FACTORY COMPONENTS
 OPTIONAL FACTORY COMPONENTS
 OPTIONAL FIELD COMPONENTS

CONDENSING UNIT WIRING, 230V 60Hz 1 Ph, single fan
T1 defrost option

A	REVISION	MAY 23, 2003	WD21-1T1
----------	----------	--------------	-----------------