



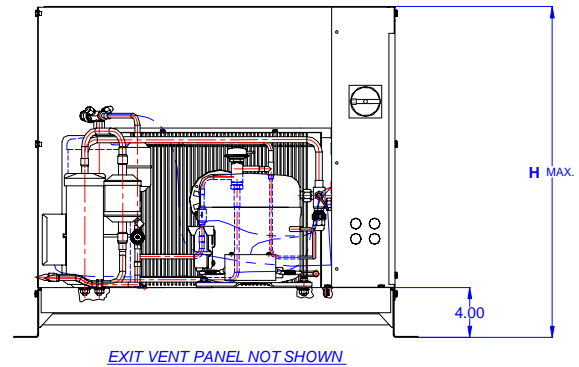
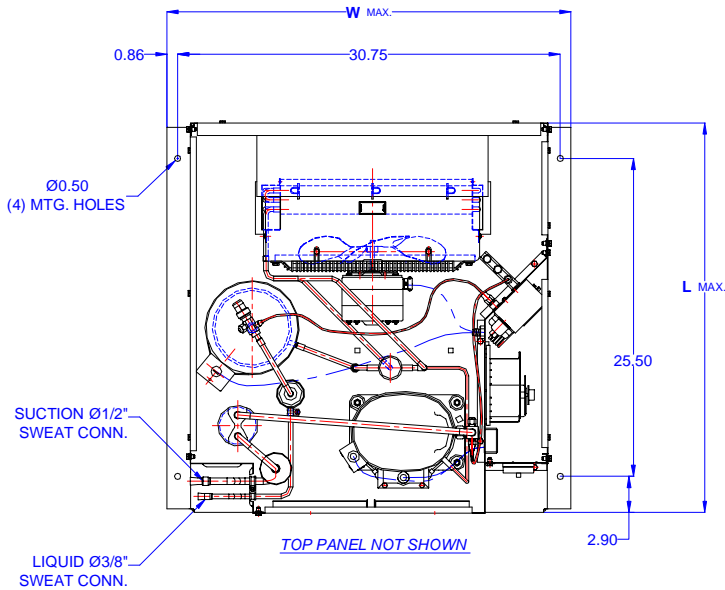
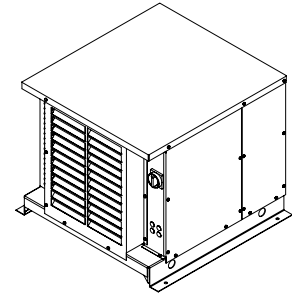
TECUMSEH HERMETIC CONDENSING UNIT



AKA9461EXDHL
TPC__rev 02
February 27, 2004

Model **AKA9461EXDHL**
BOM **2K725-2E**

Air Cooled **3/4 HP**
Application **Medium Temp**
Refrigerant **R 22**



Model	Dimensions (inch)			Line connections		Pumpdown	Air flow	Oil Ch.	Gross weight
	L	W	H	Suction	Liquid	90% @ 90°F	SCFM	Oz.	Lbs.
AKA9461EXDHL	31.50	32.50	26.75	1/2 Sweat	3/8 Sweat	10.60	600	15	190

Factory charge 20 psig dry air, **MUST BE EVACUATED**

Evaporator	Ambient Temperatures																
	85°F					90°F					100°F				110°F		
°F	Psig	BTUH	Watts	Head	Cond T	BTUH	Watts	Head	Cond T	BTUH	Watts	Head	Cond T	BTUH	Watts	Head	Cond T
-10	16.5	2700	775	191	97	2600	780	195	99	2400	790	220	107	---	---	---	---
-5	20.0	3100	815	195	99	3000	820	200	100	2800	830	225	108	---	---	---	---
0	24.0	3600	865	197	100	3500	870	205	102	3300	880	230	110	---	---	---	---
5	28.2	4250	905	199	101	4100	910	210	104	3800	920	235	111	3500	930	265	121
10	32.8	4850	944	200	102	4700	950	215	105	4400	970	240	113	4100	980	270	122
15	37.7	5590	994	205	103	5400	1000	220	107	5100	1020	245	114	4700	1030	275	123
20	43.0	6300	1040	210	104	6100	1050	225	108	5700	1070	250	117	5300	1090	280	124
25	48.8	7140	1079	217	106	6900	1090	230	110	6500	1120	260	119	6000	1140	285	126
30	54.8	7950	1125	220	107	7700	1140	235	111	7200	1170	265	121	6700	1200	295	129
35	61.5	8720	1174	232	111	8500	1190	245	114	7900	1230	275	123	7500	1260	300	130
40	68.5	9560	1220	240	113	9300	1240	255	117	8700	1280	280	124	8200	1320	310	132
45	76.0	10500	1276	250	116	10200	1300	265	121	9600	1340	290	128	9000	1390	320	135

Performance @ 60 Hz ; Return Gas Temperature 20°F max superheat above 20°F evap, 40°F max below 20°F evap ; --- SubCooling 5°F

