



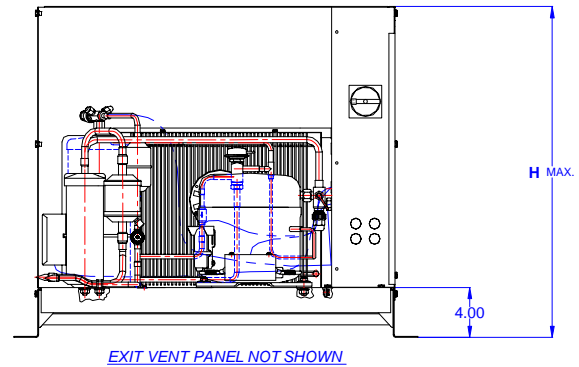
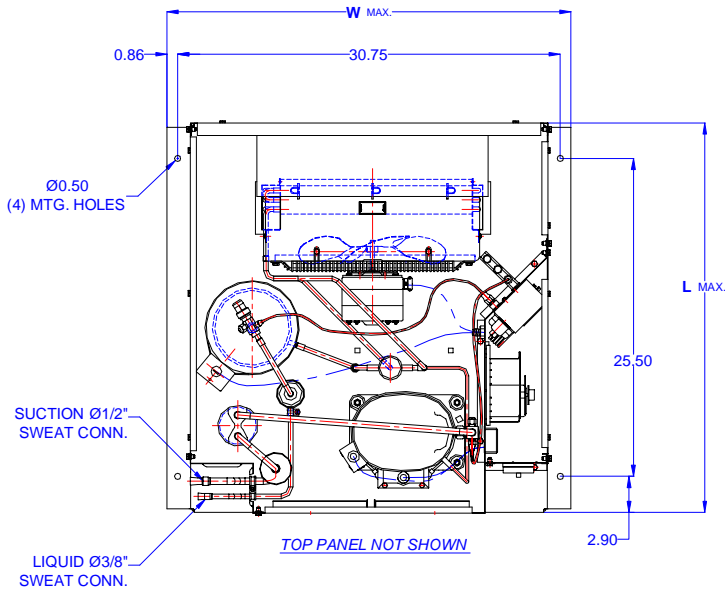
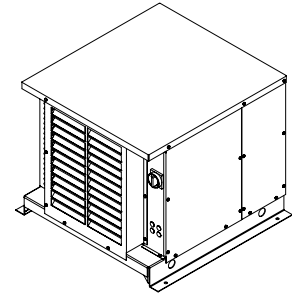
TECUMSEH HERMETIC CONDENSING UNIT



AKA9470EXDHL
TPC__rev 02
February 27, 2004

Model **AKA9470EXDHL**
BOM **2K1185-2E**

Air Cooled **7/8 HP**
Application **Medium Temp**
Refrigerant **R 22**



Model	Dimensions (inch)			Line connections		Pumpdown	Air flow	Oil Ch.	Gross weight
	L	W	H	Suction	Liquid	90% @ 90°F	SCFM	Oz.	Lbs.
AKA9470EXDHL	31.50	32.50	26.75	1/2 Sweat	3/8 Sweat	10.60	600	15	190

Factory charge 20 psig dry air, **MUST BE EVACUATED**

Evaporator	Ambient Temperatures																
	85°F					90°F				100°F				110°F			
°F	Psig	BTUH	Watts	Head	Cond T	BTUH	Watts	Head	Cond T	BTUH	Watts	Head	Cond T	BTUH	Watts	Head	Cond T
-10	16.5	3150	830	185	96	3200	840	195	98	2800	830	220	106	3000	890	245	114
-5	20.0	3970	870	185	96	3800	870	197	99	3300	880	222	107	3000	890	245	114
0	24.0	4470	920	188	97	4300	920	200	100	3800	930	225	108	3500	940	250	117
5	28.2	2000	960	193	98	2000	970	205	102	4500	990	230	110	4000	1000	255	118
10	32.8	5850	1010	195	99	5600	1020	210	104	5100	1040	235	111	4600	1060	265	121
15	37.7	6520	1060	208	103	6300	1070	220	107	5700	1090	245	114	5300	1120	270	122
20	43.0	7260	1120	212	104	7000	1130	225	108	6400	1150	255	117	5900	1180	280	124
25	48.8	8110	1170	220	107	7800	1180	235	111	7100	1210	260	120	6500	1240	290	128
30	54.8	8810	1220	230	110	8500	1240	245	114	7800	1270	270	122	7200	1310	300	130
35	61.5	9650	1260	240	113	9300	1290	255	117	8600	1330	280	124	7900	1390	310	132
40	68.5	10460	1340	250	117	10100	1360	265	121	9300	1400	290	128	8600	1450	320	135
45	76.0	11300	1410	260	120	10900	1430	275	123	10100	1480	300	130	9300	1530	330	137

Performance @ 60 Hz ; Return Gas Temperature 20°F max superheat above 20°F evap, 40°F max below 20°F evap ; --- SubCooling 5°F

