



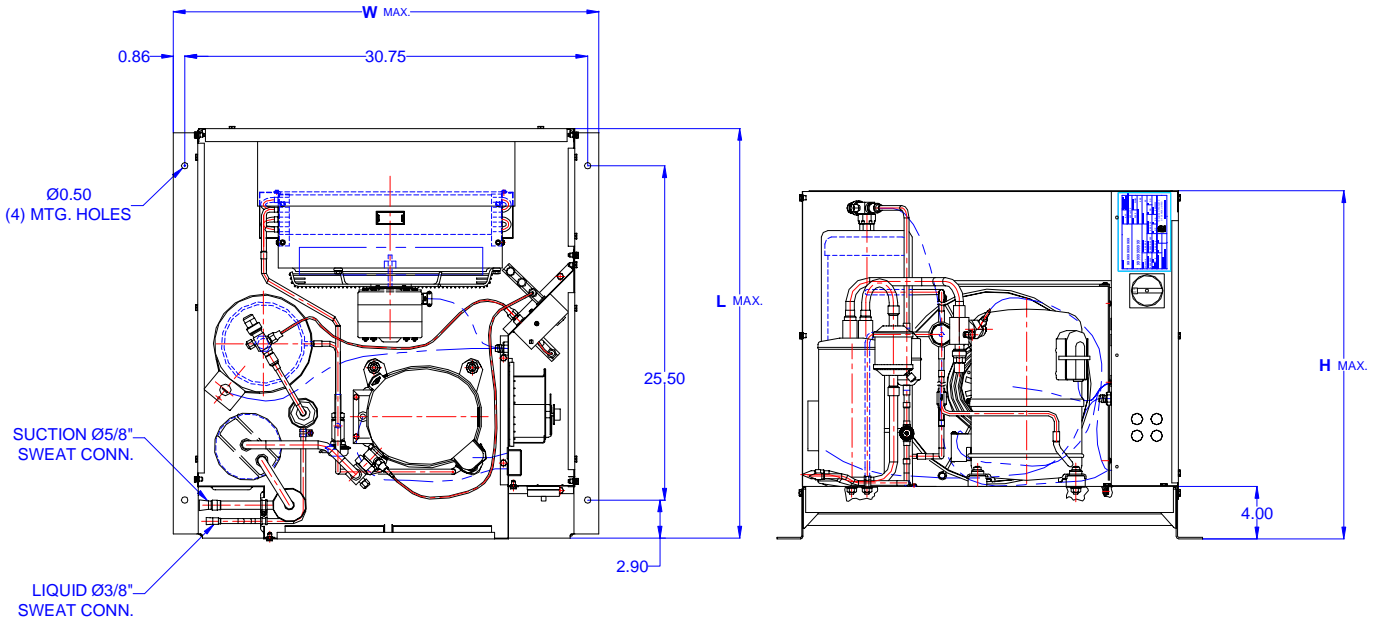
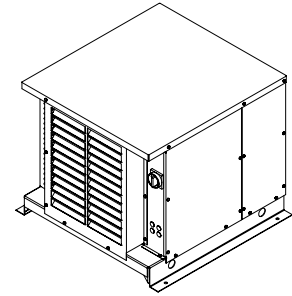
TECUMSEH HERMETIC CONDENSING UNIT



AWA7512ZXDHL
TPC__rev 02
February 27, 2004

Model **AWA7512ZXDHL**
BOM **2K3217-2E**

Air Cooled **1 1/2 HP**
Application **Medium Temp**
Refrigerant **R404A**



Model	Dimensions (inch)			Line connections		Pumpdown	Air flow	Oil Ch.	Gross weight
	L	W	H	Suction	Liquid	90% @ 90°F	SCFM	Oz.	Lbs.
AWA7512ZXDHL	31.50	32.50	26.75	5/8 Sweat	3/8 Sweat	20.72	750	38	200

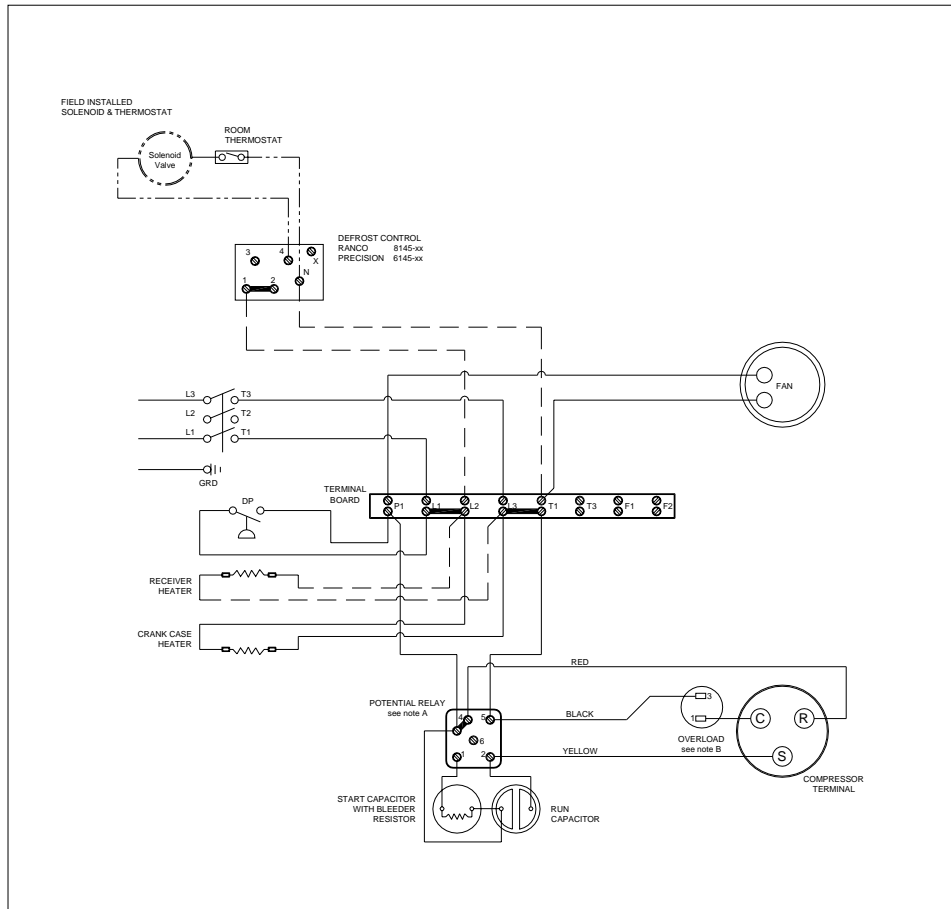
Factory charge 20 psig dry air, **MUST BE EVACUATED**

Evaporator		Ambient Temperatures															
		80°F				90°F				100°F				110°F			
°F	Psig	BTUH	Watts	Head	Cond T	BTUH	Watts	Head	Cond T	BTUH	Watts	Head	Cond T	BTUH	Watts	Head	Cond T
-10	23.6	7049	1544	218	96	5910	1495	251	104	5386	1471	285	113	3940	1410	318	121
-5	27.9	7966	1645	225	98	6769	1606	259	106	6013	1587	294	115	4596	1538	327	123
0	32.6	8951	1749	234	100	7686	1720	268	108	6707	1705	303	117	5299	1669	336	125
5	37.7	10006	1855	244	102	8661	1835	278	110	7467	1826	313	119	6047	1801	346	127
10	43.2	11129	1961	254	105	9694	1951	288	113	8294	1950	323	122	6842	1935	357	130
15	49.1	12320	2071	266	107	10785	2069	300	115	9187	2076	335	124	7684	2070	368	132
20	55.4	13581	2182	278	110	11934	2189	312	118	10148	2205	347	127	8571	2207	380	134
25	62.2	14911	2296	292	113	13142	2311	325	121	11174	2336	360	129	9505	2346	392	137
30	69.6	16308	2411	307	117	14407	2434	339	124	12267	2469	374	132	10486	2486	405	139

Performance @ 60 Hz, Return Gas Temperature 45°F, --- SubCooling 5°F

Parts/Specifications			
STANDARD		OPTIONAL	
Unit BOM	2K3217-2E	Fan Motor	810S050A99
Unit MODEL	AWA7512ZXDHL	Fan Motor Qty	1
		Fan Motor RLA	1.3
Refrigeration RANGE	-10F TO +30F	Fan Blade	51568
Design Pressure Low	181	Fan Guard	70831
Design Pressure High	450	Shroud	70727-2
Volts - HZ - Ph	208-230-60-1		
Voltage Range	253 - 197	High Pressure switch	
Min. Circuit Ampacity	17.6	Low Pressure Control	
Max. Fuse Size	30	Dual Pressure Control	84087
Compressor MODEL	AWA7512ZXD	Condenser	50857-1
Compressor BOM	AW611ET-111-A2	Head Master Valve	LAC-4-215-3/8
Compressor LRA	73	Check Valve	CV-020-1011
Compressor RLA	12.9	Process Valve	
		Liquid Valve	31590
OverLoad	Internal	Suction Valve	31531-1
Relay	820ARR3J50		
Run Capacitor	85PR370F17	Receiver	51082-2
Run Capacitor Rating	35MFD 370V(M)VDE	Receiver Qty	1
Start Capacitor	85PS330D16	Accumulator	TK00042000
Start Capacitor Rating	130-156 MFD 330V	Liquid Filter	5200-083D
Contactors		Sight Glass	SG-06D
		Suction Filter	WSF-5S
Unit Drawing	DGU1918-KE		
Wiring no Fan controls	WD21-1T1	CrankCase Heater	91022-1

BOM INDEX DESCRIPTION	
2xYYYY- 2ERA(F)TnDS	
E	Enclosure
R	Receiver Heater
A	Adjustable fan control
F	Fixed fan Control
T1	Defrost timer option
T2	Defrost timer & Defrost Heaters Contactor
D	Disconnect
S	Solenoid liquid Valve (supplied loose)



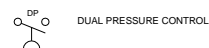
NOTES

FIELD WIRING NOTES

- ALL FIELD WIRING MUST BE DONE IN COMPLIANCE WITH ALL APPLICABLE LOCAL AND NATIONAL CODES.
- CONNECT INCOMING POWER LEADS FROM POWER SUPPLY TO L1 AND L3 IN TERMINAL BOARD OR TO L1 AND L3 IN DISCONNECT SWITCH (IF PROVIDED). USE COPPER CONDUCTORS ONLY. (EMPLOYER DES CONDUCTEURS DE CUIVRE SEULEMENT.) PROVIDE EQUIPMENT GROUNDING CONDUCTOR. USE 75°C (MIN.) WIRING

GENERAL NOTES:

- WITH ANY T.P.Co. APPROVED START RELAY USED, CONNECT LEADS TO SAME NUMBERED TERMINALS REGARDLESS OF LOCATION
- COMPRESSOR MAY BE EQUIPPED WITH EITHER INTERNAL OR EXTERNAL OVERLOAD PROTECTOR. (DIAGRAM SHOWS AN EXTERNAL OVERLOAD) COMPRESSORS THAT ARE EQUIPPED WITH INTERNAL OVERLOAD ARE ALL "AG"-s, "AV"-s, "AW"-s AND SOME "AJ"-s. ALLOW TIME FOR RESET.



- FACTORY COMPONENTS
- OPTIONAL FACTORY COMPONENTS
- OPTIONAL FIELD COMPONENTS

CONDENSING UNIT WIRING, 230V 60Hz 1 Ph, single fan
T1 defrost option

A
REVISION

WD21-1T1