



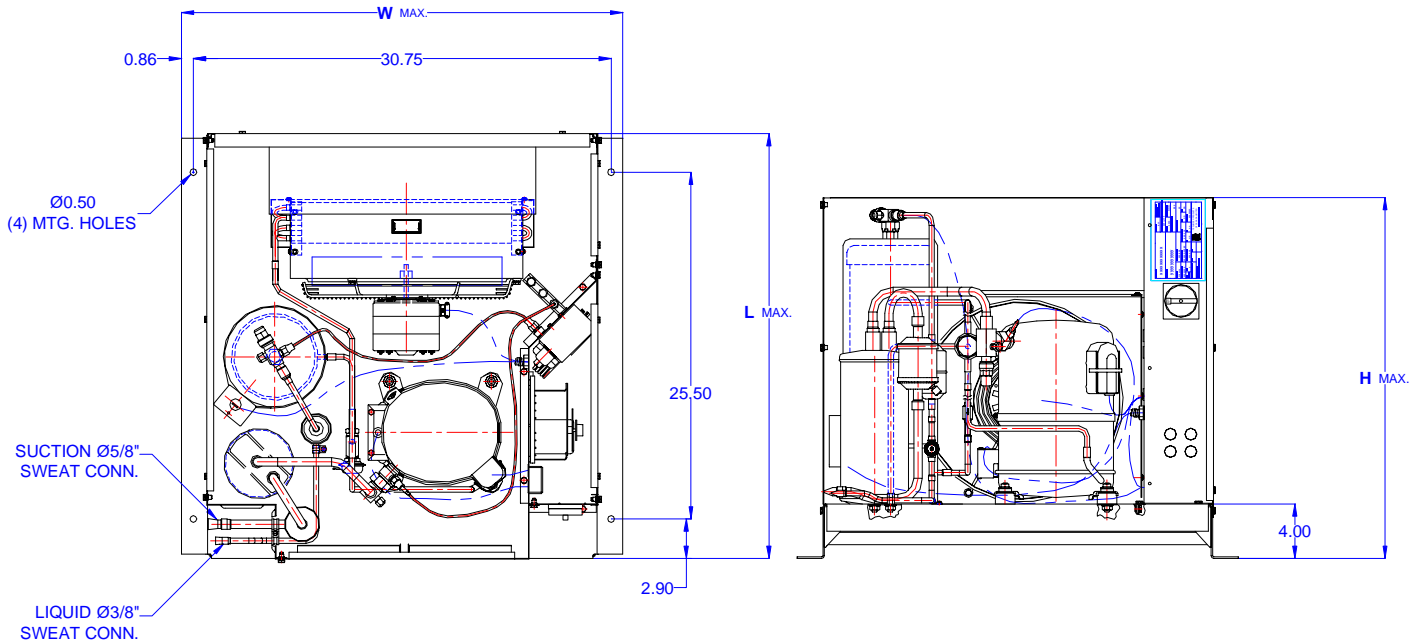
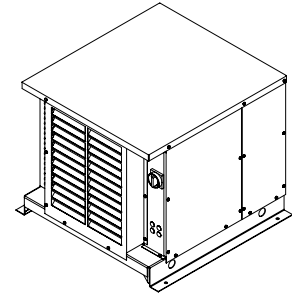
TECUMSEH HERMETIC CONDENSING UNIT



AWA7515ZXDHL
TPC__rev 02
February 27, 2004

Model **AWA7515ZXDHL**
BOM **2K3220-2E**

Air Cooled **2 HP**
Application **Medium Temp**
Refrigerant **R404A**



Model	Dimensions (inch)			Line connections		Pumpdown	Air flow	Oil Ch.	Gross weight
	L	W	H	Suction	Liquid	90% @ 90°F	SCFM	Oz.	Lbs.
AWA7515ZXDHL	31.50	32.50	26.75	5/8 Sweat	3/8 Sweat	20.72	750	38	200

Factory charge 20 psig dry air, **MUST BE EVACUATED**

Evaporator		Ambient Temperatures															
		80°F				90°F				100°F				110°F			
°F	Psig	BTUH	Watts	Head	Cond T	BTUH	Watts	Head	Cond T	BTUH	Watts	Head	Cond T	BTUH	Watts	Head	Cond T
-10	23.6	9050	1922	234	100	7940	1900	268	108	6787	1929	301	117	5698	1882	335	125
-5	27.9	10107	2053	245	102	8890	2050	279	110	7642	2074	311	119	6441	2057	346	127
0	32.6	11221	2193	256	104	9890	2205	290	113	8531	2228	322	121	7214	2234	357	130
5	37.7	12397	2339	267	108	10942	2365	301	116	9455	2388	334	124	8016	2415	369	132
10	43.2	13631	2494	280	110	12044	2530	314	118	10412	2557	346	126	8848	2598	381	134
15	49.1	14923	2654	293	113	13196	2700	327	121	11403	2732	359	129	9709	2785	394	137
20	55.4	16276	2822	305	117	14400	2875	340	124	12429	2915	372	132	10600	2975	408	139
25	62.2	17568	2997	321	119	15564	3055	355	127	13488	3106	387	134	11520	3168	422	142
30	69.6	19159	3179	336	122	16959	3240	370	130	14582	3304	402	137	12471	3364	437	145

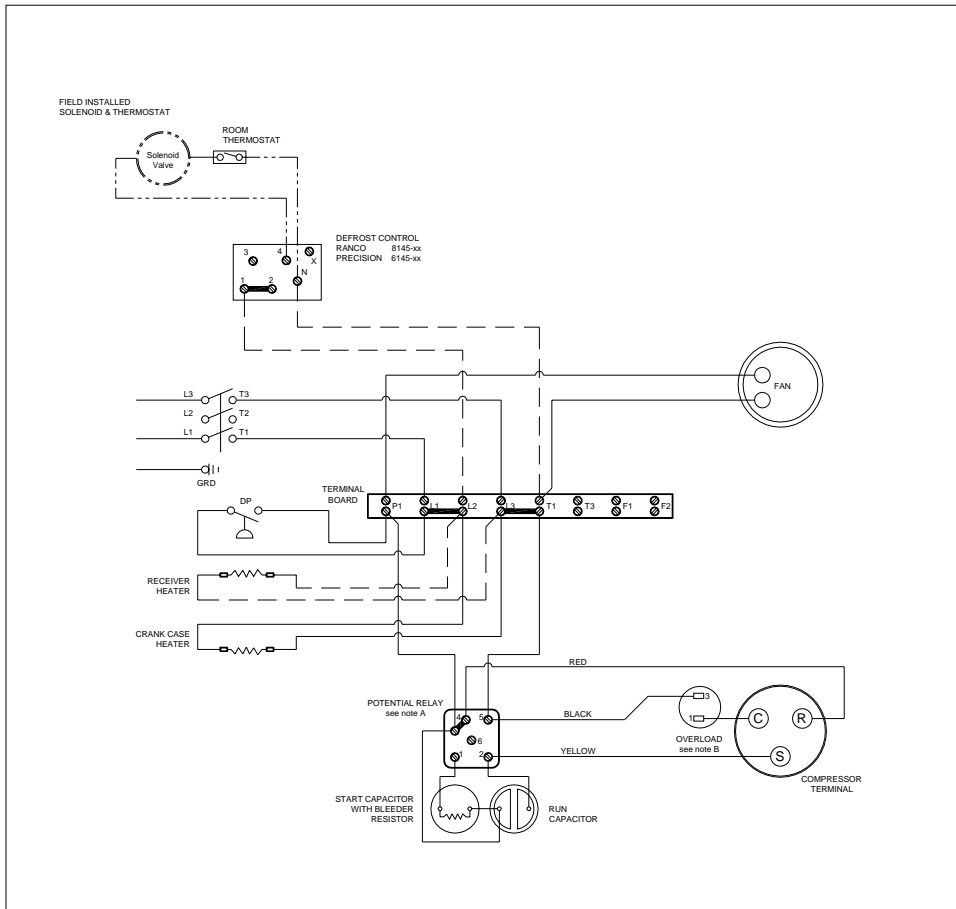
Performance @ 60 Hz, Return Gas Temperature 40°F, --- SubCooling 5°F

Parts/Specifications

STANDARD		OPTIONAL	
Unit BOM	2K3220-2E	Fan Motor	810S050A99
Unit MODEL	AWA7515ZXDHL	Fan Motor Qty	1
		Fan Motor RLA	1.3
Refrigeration RANGE	-10F TO +30F	Fan Blade	51568
Design Pressure Low	181	Fan Guard	70831
Design Pressure High	450	Shroud	70727-2
Volts - HZ - Ph	208-230-60-1		
Voltage Range	253 - 197	High Pressure switch	
Min. Circuit Ampacity	21.6	Low Pressure Control	
Max. Fuse Size	35	Dual Pressure Control	84087
Compressor MODEL	AWA7515ZXD	Condenser	50857-1
Compressor BOM	AW612ET-111-A2	Head Master Valve	LAC-4-215-3/8
Compressor LRA	96.8	Check Valve	CV-020-1011
Compressor RLA	16.1	Process Valve	
		Liquid Valve	31590
OverLoad	Internal	Suction Valve	31531-1
Relay	820ARR3J56		
Run Capacitor	85PR370F17	Receiver	51082-2
Run Capacitor Rating	35MFD 370V(M)VDE	Receiver Qty	1
Start Capacitor	85PS330D13	Accumulator	TK00042000
Start Capacitor Rating	108-130 MFD 330V	Liquid Filter	5200-083D
Contactors		Sight Glass	SG-06D
		Suction Filter	WSF-5S
Unit Drawing	DGU1918-KE		
Wiring no Fan controls	WD21-1T1	CrankCase Heater	91022-1

BOM INDEX DESCRIPTION

- 2xYYYY- 2ERA(F)TnDS**
- E Enclosure
 - R Receiver Heater
 - A Adjustable fan control
 - F Fixed fan Control
 - T1 Defrost timer option
 - T2 Defrost timer & Defrost Heaters Contactor
 - D Disconnect
 - S Solenoid liquid Valve (supplied loose)



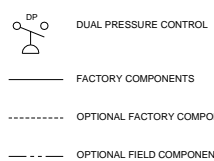
NOTES

FIELD WIRING NOTES

1. ALL FIELD WIRING MUST BE DONE IN COMPLIANCE WITH ALL APPLICABLE LOCAL AND NATIONAL CODES.
2. CONNECT INCOMING POWER LEADS FROM POWER SUPPLY TO L1 AND L3 IN TERMINAL BOARD OR TO L1 AND L3 IN DISCONNECT SWITCH (IF PROVIDED). USE COPPER CONDUCTORS ONLY. (EMPLOYER DES CONDUCTEURS DE CUIVRE SEULEMENT.) PROVIDE EQUIPMENT GROUNDING CONDUCTOR. USE 75°C (MIN.) WIRING

GENERAL NOTES:

- A. WITH ANY T.P.Co. APPROVED START RELAY USED, CONNECT LEADS TO SAME NUMBERED TERMINALS REGARDLESS OF LOCATION
- B. COMPRESSOR MAY BE EQUIPPED WITH EITHER INTERNAL OR EXTERNAL OVERLOAD PROTECTOR. (DIAGRAM SHOWS AN EXTERNAL OVERLOAD) COMPRESSORS THAT ARE EQUIPPED WITH INTERNAL OVERLOAD ARE ALL "AG"-s, "AV"-s, "AW"-s AND SOME "AJ"-s. ALLOW TIME FOR RESET.



CONDENSING UNIT WIRING, 230V 60Hz 1 Ph, single fan
T1 defrost option

A	REVISION	MAY 23, 2003	WD21-1T1