



TECUMSEH HERMETIC CONDENSING UNIT



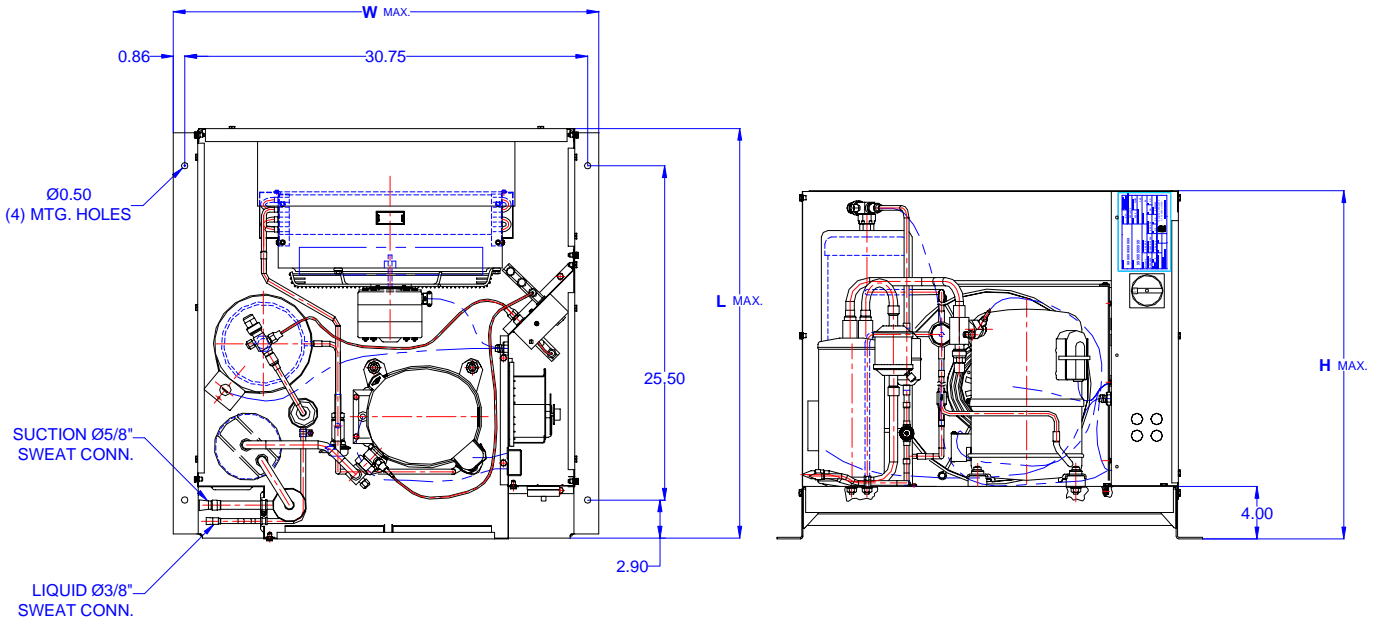
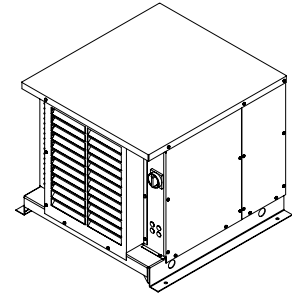
AWA7515ZXTHL

TPC__rev 02

February 27, 2004

Model **AWA7515ZXTHL**
BOM **2K3219-2E**

Air Cooled **2 HP**
Application **Medium Temp**
Refrigerant **R404A**



Model	Dimensions (inch)			Line connections		Pumpdown	Air flow	Oil Ch.	Gross weight
	L	W	H	Suction	Liquid	90% @ 90°F	SCFM	Oz.	Lbs.
AWA7515ZXTHL	31.50	32.50	26.75	5/8 Sweat	3/8 Sweat	20.72	750	38	200

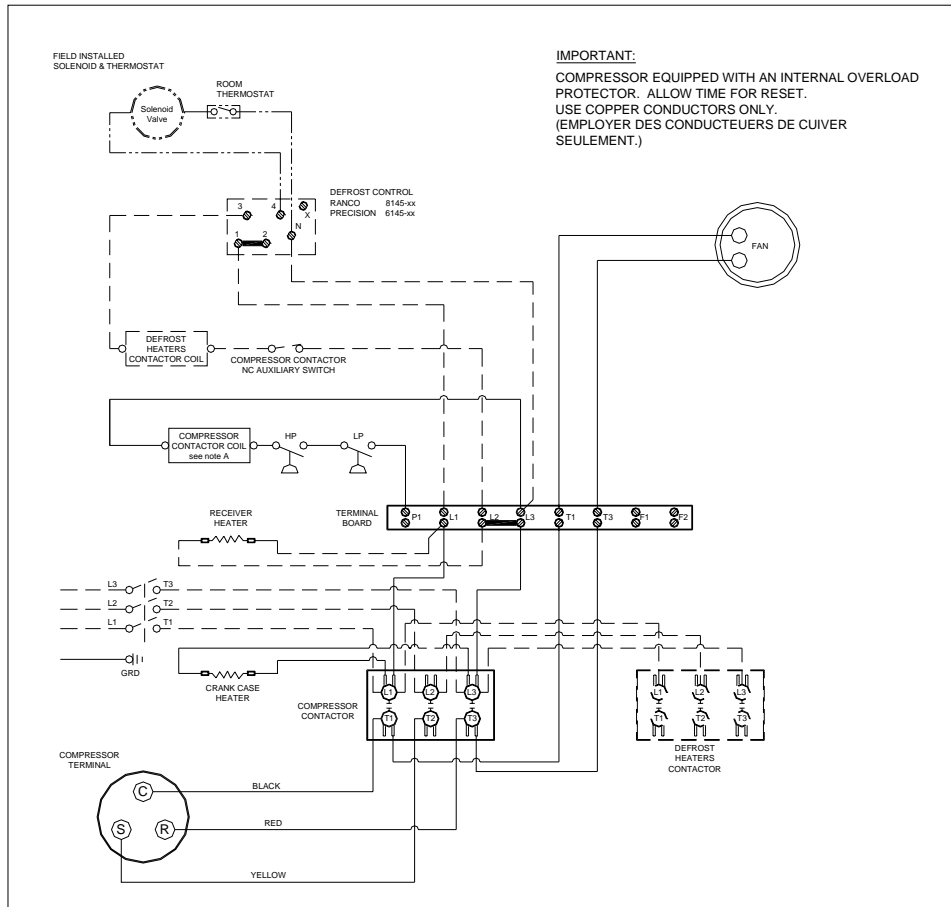
Factory charge 20 psig dry air, **MUST BE EVACUATED**

Evaporator		Ambient Temperatures															
		80°F				90°F				100°F				110°F			
°F	Psig	BTUH	Watts	Head	Cond T	BTUH	Watts	Head	Cond T	BTUH	Watts	Head	Cond T	BTUH	Watts	Head	Cond T
-10	23.6	9050	1922	234	100	7940	1900	268	108	6787	1929	301	117	5698	1882	335	125
-5	27.9	10107	2053	245	102	8890	2050	279	110	7642	2074	311	119	6441	2057	346	127
0	32.6	11221	2193	256	104	9890	2205	290	113	8531	2228	322	121	7214	2234	357	130
5	37.7	12397	2339	267	108	10942	2365	301	116	9455	2388	334	124	8016	2415	369	132
10	43.2	13631	2494	280	110	12044	2530	314	118	10412	2557	346	126	8848	2598	381	134
15	49.1	14923	2654	293	113	13196	2700	327	121	11403	2732	359	129	9709	2785	394	137
20	55.4	16276	2822	305	117	14400	2875	340	124	12429	2915	372	132	10600	2975	408	139
25	62.2	17568	2997	321	119	15564	3055	355	127	13488	3106	387	134	11520	3168	422	142
30	69.6	19159	3179	336	122	16959	3240	370	130	14582	3304	402	137	12471	3364	437	145

Performance @ 60 Hz, Return Gas Temperature 40°F, --- SubCooling 5°F

Parts/Specifications			
STANDARD		OPTIONAL	
Unit BOM	2K3219-2E	Fan Motor	810S050A99
Unit MODEL	AWA7515ZXTHL	Fan Motor Qty	1
		Fan Motor RLA	1.3
Refrigeration RANGE	-10F TO +30F	Fan Blade	51568
Design Pressure Low	181	Fan Guard	70831
Design Pressure High	450	Shroud	70727-2
Volts - HZ - Ph	200-230-60-3		
Voltage Range	253 - 180	High Pressure switch	84097-3
Min. Circuit Ampacity	12	Low Pressure Control	84026-D
Max. Fuse Size	20	Dual Pressure Control	
Compressor MODEL	AWA7515ZXT	Condenser	50857-1
Compressor BOM	AW612RT-121-A2	Head Master Valve	LAC-4-215-3/8
Compressor LRA	63.4	Check Valve	CV-020-1011
Compressor RLA	8.4	Process Valve	
		Liquid Valve	31590
OverLoad	Internal	Suction Valve	31531-1
Relay			
Run Capacitor		Receiver	51082-2
Run Capacitor Rating		Receiver Qty	1
Start Capacitor		Accumulator	TK00042000
Start Capacitor Rating		Liquid Filter	5200-083D
Contactor	91014	Sight Glass	SG-06D
		Suction Filter	WSF-5S
Unit Drawing	DGU1918-3KE		
Wiring no Fan controls	WD23-1T2	CrankCase Heater	91022-1

BOM INDEX DESCRIPTION	
2xYYYY- 2ERA(F)TnDS	
E	Enclosure
R	Receiver Heater
A	Adjustable fan control
F	Fixed fan Control
T1	Defrost timer option
T2	Defrost timer & Defrost Heaters Contactor
D	Disconnect
S	Solenoid liquid Valve (supplied loose)



NOTES

FIELD WIRING NOTES

- ALL FIELD WIRING MUST BE DONE IN COMPLIANCE WITH ALL APPLICABLE LOCAL AND NATIONAL CODES.
- CONNECT INCOMING POWER LEADS FROM POWER SUPPLY TO L1, L2, AND L3 IN COMPRESSOR CONTACTOR OR TO L1, L2 AND L3 IN DISCONNECT SWITCH (IF PROVIDED). USE COPPER CONDUCTORS ONLY. (EMPLOYER DES CONDUCTEURS DE CUIVRE SEULEMENT.) PROVIDE EQUIPMENT GROUNDING CONDUCTOR. USE 75°C (MIN.) WIRING.
- PLACE JUMPER ACROSS P1 AND L1 IN TERMINAL BOARD IF NO OTHER CONTROLLING DEVICE IS INSTALLED.
- DEFROST HEATERS LOADS SHOULD NOT BE HIGHER THEN THE MAXIMUM HEATERS LOAD INDICATED ON THE UNIT LABEL.

GENERAL NOTES:

- CONTACTOR COIL CIRCUIT IS FACTORY CONNECTED TO 230 V SOURCE IN PANEL AS SHOWN.
- COMPRESSOR EQUIPPED WITH AN INTERNAL OVERLOAD PROTECTOR. ALLOW TIME FOR RESET.

CONDENSING UNIT WIRING, 230V 60Hz 3 Ph,
 Single fan
 T1 & T2 defrost options

A	REVISION	MAY 23, 2003	WD23-1T2
----------	----------	--------------	-----------------