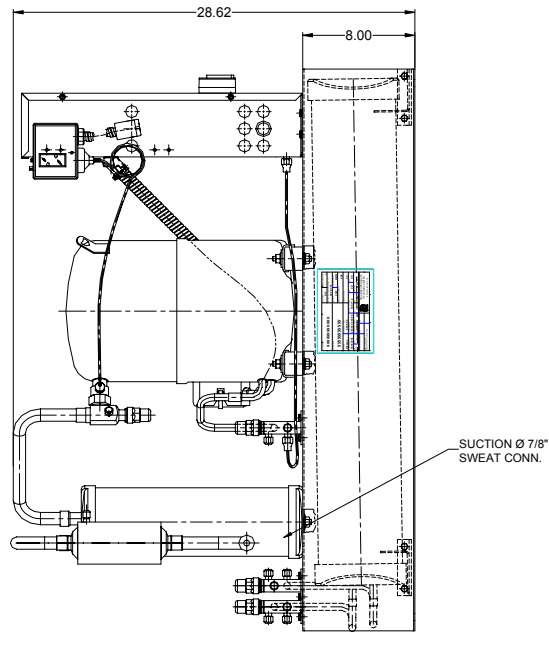
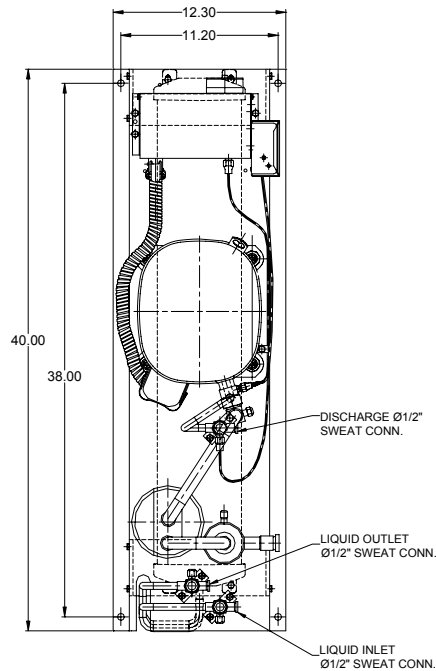
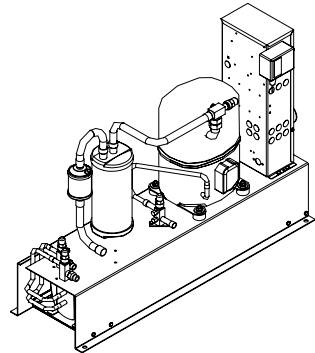




# TECUMSEH HERMETIC CONDENSING UNIT

AGA4553EXTRL  
TPC\_\_rev 01  
July 13, 2004

**Model** AGA4553EXTRL  
**BOM** 2R4053-2  
**Remote Condenser** 4 1/2 HP  
**Application** High Temp  
**Refrigerant** R 22



Model	Dimensions (inch)			Line connections		Pumpdown	Oil Ch.	Gross weight
	L	W	H	Suction	Liquid In/Out	90% @ 90°F	Oz.	Lbs.
<b>AGA4553EXTRL</b>	40.00	12.25	28.62	7/8 Sweat	1/2 Sweat	38.50	65	340

Factory charge 20 psig dry air, **MUST BE EVACUATED**

Evaporator	Condensing Temperatures													
	95°F		100°F		110°F		115°F		120°F		130°F		140°F	
°F	BTUH	Watts	BTUH	Watts	BTUH	Watts	BTUH	Watts	BTUH	Watts	BTUH	Watts	BTUH	Watts
5	24334	3134	23089	3107	20603	3055	19364	3030	18128	3004	15663	2954	<del>13210</del>	<del>2906</del>
10	28238	3350	26793	3341	23906	3322	22465	3313	21025	3305	18151	3288	<del>15286</del>	<del>3271</del>
20	37904	3766	36069	3791	32398	3842	30562	3867	28725	3892	25052	3943	21381	3994
30	49985	4152	47773	4213	43341	4336	41123	4396	38902	4457	34456	4578	30003	4698
40	64403	4501	61826	4600	56661	4796	54072	4894	51480	4991	46285	5185	41076	5377
<b>45</b>	<b>72465</b>	<b>4660</b>	<b>69710</b>	<b>4777</b>	<b>64187</b>	<b>5012</b>	<b>61418</b>	<b>5128</b>	<b>58645</b>	<b>5244</b>	<b>53085</b>	<b>5475</b>	<b>47508</b>	<b>5704</b>
50	81082	4806	78154	4943	72279	5216	69333	5352	66382	5487	60463	5756	54524	6022
55	90246	4939	87147	5096	80927	5409	77807	5564	74681	5718	68410	6025	62115	6330

Performance @ 60 Hz, SuperHeat 20°F, --- SubCooling 15°F

Parts/Specifications

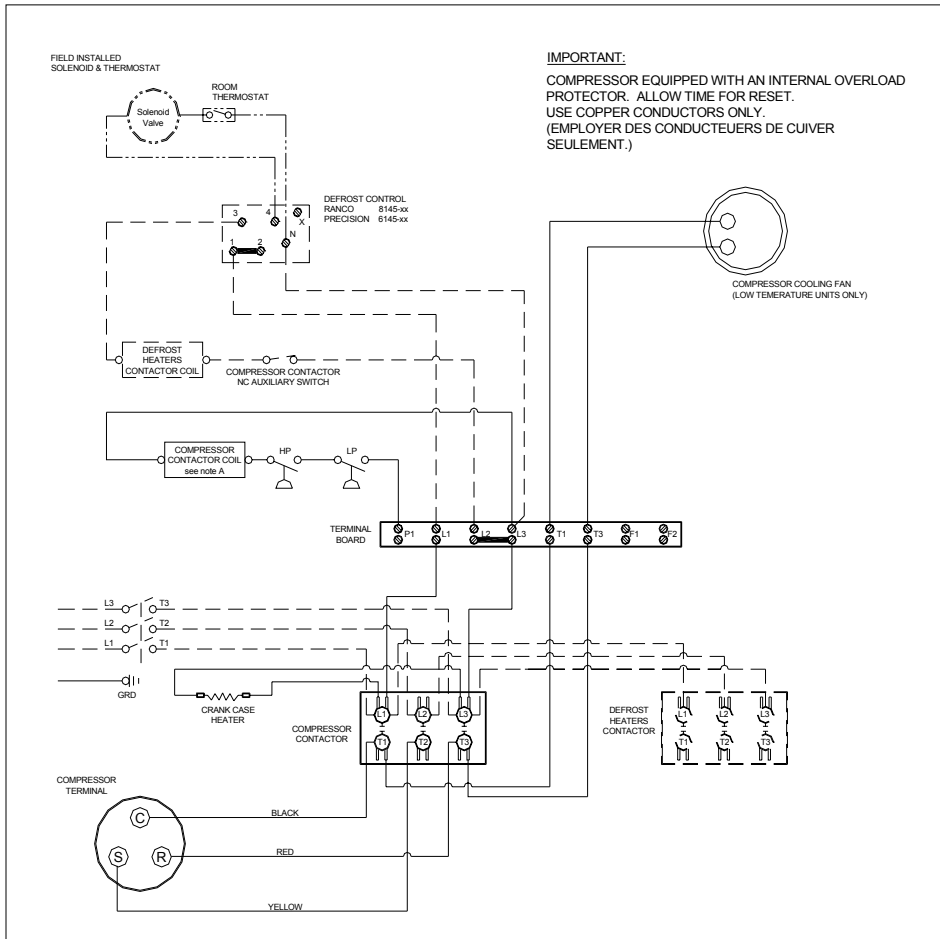
STANDARD		OPTIONAL	
Unit BOM	2R4053-2	Fan Motor	
Unit MODEL	AGA4553EXTRL	Fan Motor RLA	
		Fan Blade	
Refrigeration RANGE	+20F TO +55F		
Design Pressure Low	150	High Pressure switch	84095-1
Design Pressure High	450	Low Pressure Control	84026-D
Volts - HZ - Ph	200-230-60-3	Dual Pressure Control	
Voltage Range	253 - 180		
Min. Circuit Ampacity	20.8	Receiver	51083
Max. Fuse Size	40	Accumulator	TK00044000
		Receiver In Valve	56566
Compressor MODEL	AGA5553EXT	Receiver Out Valve	56566
Compressor BOM	AG122RT-003-A4	Discharge Valve	56566
Compressor LRA	103	Suction Valve	31529-1
Compressor RLA	16.5		
		Suction Filter (7/8)	70822-5S
OverLoad			
Relay		CrankCase Heater	90699
Run Capacitor			
Run Capacitor Rating			
Start Capacitor			
Start Capacitor Rating			
Contactor	91014		
Unit Drawing	DGU1901-1R		
Wiring no Fan controls	WD23-RT2		

BOM INDEX DESCRIPTION

2Rxxxx- 2TnDS

- T1 Defrost timer option
- T2 Defrost timer & Defrost Heaters Contactor
- D Disconnect
- S Solenoid liquid Valve (supplied loose)

**WARNING:** Installer must validate that tubing is sized in such a manner to insure adequate oil return. Oil level may require adjustment for long pipe runs.



NOTES

FIELD WIRING NOTES

- ALL FIELD WIRING MUST BE DONE IN COMPLIANCE WITH ALL APPLICABLE LOCAL AND NATIONAL CODES.
- CONNECT INCOMING POWER LEADS FROM POWER SUPPLY TO L1, L2, AND L3 IN COMPRESSOR CONTACTOR OR TO L1, L2 AND L3 IN DISCONNECT SWITCH (IF PROVIDED). USE COPPER CONDUCTORS ONLY. (EMPLOYER DES CONDUCTEURS DE CUIVRE SEULEMENT.) PROVIDE EQUIPMENT GROUNDING CONDUCTOR. USE 75° C (MIN.) WIRING.
- PLACE JUMPER ACROSS P1 AND L1 IN TERMINAL BOARD IF NO OTHER CONTROLLING DEVICE IS INSTALLED.
- DEFROST HEATERS LOADS SHOULD NOT BE HIGHER THEN THE MAXIMUM HEATERS LOAD INDICATED ON THE UNIT LABEL.

GENERAL NOTES:

- A. CONTACTOR COIL CIRCUIT IS FACTORY CONNECTED TO 230 V SOURCE IN PANEL AS SHOWN
- B. COMPRESSOR EQUIPPED WITH AN INTERNAL OVERLOAD PROTECTOR. ALLOW TIME FOR RESET.

LP LOW PRESSURE CONTROL

HP HIGH PRESSURE SWITCH

FACTORY COMPONENTS

OPTIONAL FACTORY COMPONENTS

OPTIONAL FIELD COMPONENTS

CONDENSING UNIT WIRING, 230V 60Hz 3 Ph, Remote Condenser, T1 & T2 defrost options

A  
REVISION

MAR 22 2004

WD23-RT2