

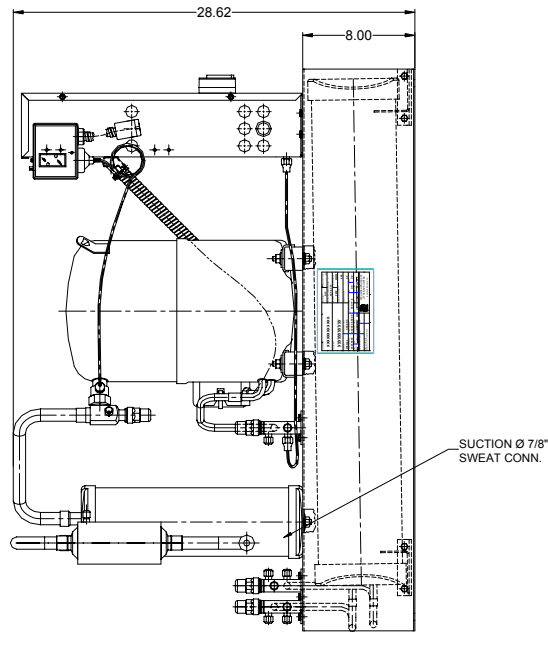
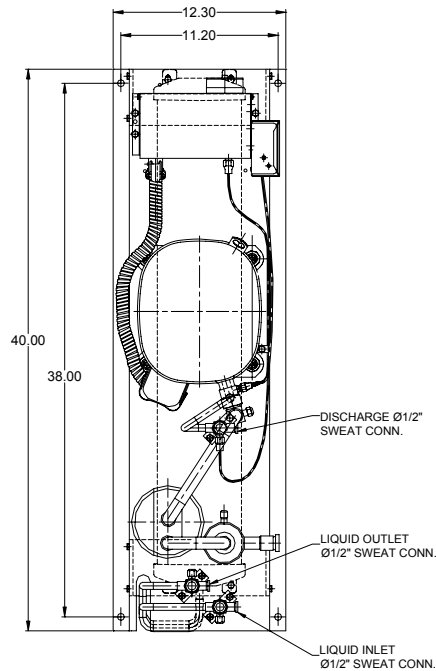
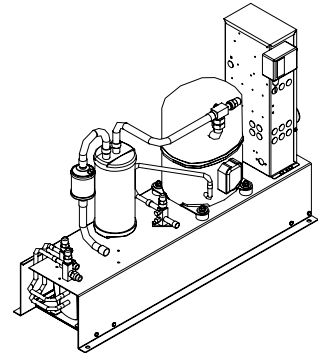


TECUMSEH HERMETIC CONDENSING UNIT

AGA4568EXNRL
TPC__rev 01
July 13, 2004

Model AGA4568EXNRL
BOM 2R5060-2

Remote Condenser 6 HP
Application High Temp
Refrigerant R 22



Model	Dimensions (inch)			Line connections		Pumpdown	Oil Ch.	Gross weight
	L	W	H	Suction	Liquid In/Out	90% @ 90°F	Oz.	Lbs.
AGA4568EXNRL	40.00	12.25	28.62	7/8 Sweat	1/2 Sweat	38.50	65	340

Factory charge 20 psig dry air, **MUST BE EVACUATED**

Evaporator	Condensing Temperatures													
	95°F		100°F		110°F		115°F		120°F		130°F		140°F	
°F	BTUH	Watts	BTUH	Watts	BTUH	Watts	BTUH	Watts	BTUH	Watts	BTUH	Watts	BTUH	Watts
5	31031	4287	29649	4289	26895	4293	25524	4296	24156	4299	21432	4305	38726	4313
10	35461	4519	33870	4539	30692	4578	29107	4599	27524	4619	24366	4661	41221	4788
20	46645	5004	44648	5061	40652	5175	38654	5232	36655	5288	32658	5402	28662	5515
30	60831	5513	58448	5608	53672	5799	51279	5893	48883	5988	44084	6176	39275	6363
40	77905	6036	75155	6171	69636	6441	66867	6575	64094	6708	58530	6974	52947	7239
45	87490	6300	84562	6456	78686	6766	75737	6920	72781	7074	66850	7380	60893	7684
50	97753	6563	94654	6740	88430	7092	85305	7267	82172	7442	75882	7788	69561	8133
55	108681	6826	105415	7025	98853	7419	95557	7615	92251	7810	85612	8198	78937	8584

Performance @ 60 Hz, SuperHeat 20°F, --- SubCooling 15°F

Parts/Specifications

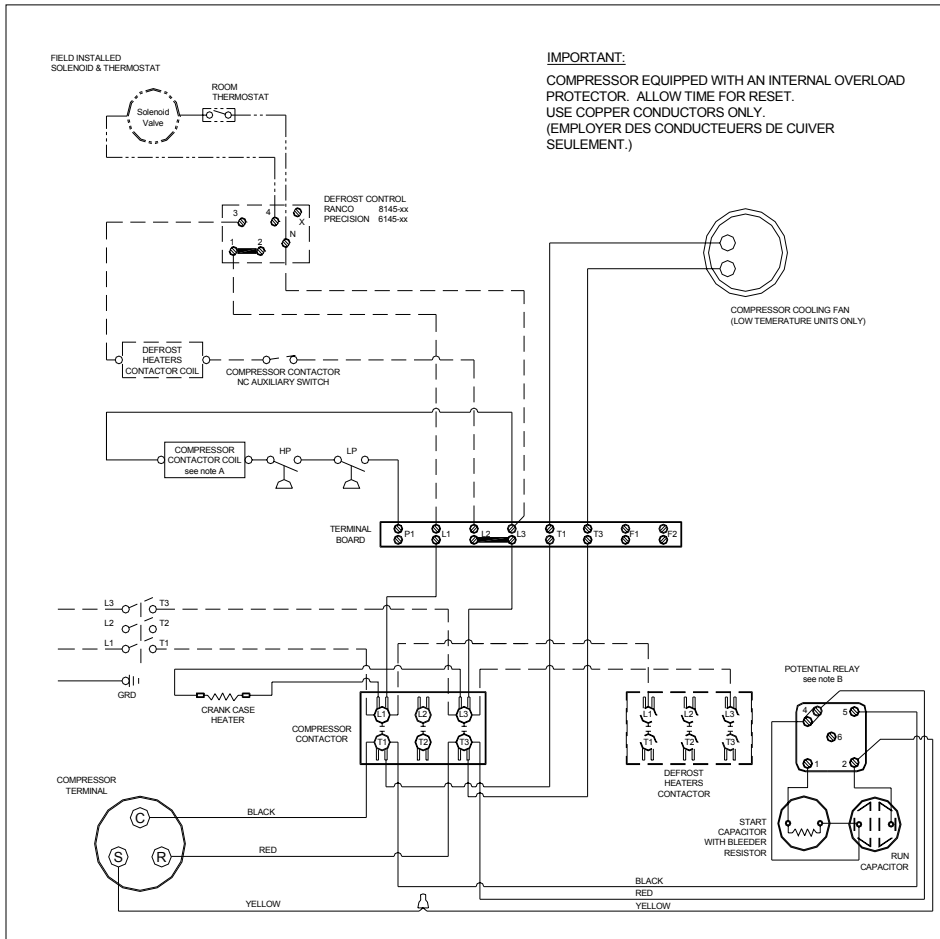
STANDARD		OPTIONAL	
Unit BOM	2R5060-2	Fan Motor	
Unit MODEL	AGA4568EXNRL	Fan Motor RLA	
		Fan Blade	
Refrigeration RANGE	+20F TO +55F		
Design Pressure Low	150	High Pressure switch	84095-1
Design Pressure High	450	Low Pressure Control	84026-D
Volts - HZ - Ph	208-230-60-1	Dual Pressure Control	
Voltage Range	253 - 197		
Min. Circuit Ampacity	43.5	Receiver	51083
Max. Fuse Size	80	Accumulator	TK00044000
		Receiver In Valve	56566
Compressor MODEL	AGA5568EXN	Receiver Out Valve	56566
Compressor BOM	AG144ET-002-A4	Discharge Valve	56566
Compressor LRA	179	Suction Valve	31529-1
Compressor RLA	34.6		
		Suction Filter (7/8)	70822-5S
OverLoad			
Relay	820ARR3C30	CrankCase Heater	90699
Run Capacitor	85PR440E90		
Run Capacitor Rating	55MFD 440V(M)VDE		
Start Capacitor	85PS330D16		
Start Capacitor Rating	130-156 MFD 330V		
Contactors	91012		
Unit Drawing	DGU1901-1R		
Wiring no Fan controls	WD21-RT2		

BOM INDEX DESCRIPTION

2Rxxxx- 2TnDS

- T1 Defrost timer option
- T2 Defrost timer & Defrost Heaters Contactor
- D Disconnect
- S Solenoid liquid Valve (supplied loose)

WARNING: Installer must validate that tubing is sized in such a manner to insure adequate oil return. Oil level may require adjustment for long pipe runs.



IMPORTANT:
 COMPRESSOR EQUIPPED WITH AN INTERNAL OVERLOAD PROTECTOR. ALLOW TIME FOR RESET.
 USE COPPER CONDUCTORS ONLY.
 (EMPLOYER DES CONDUCTEURS DE CUIVRE SEULEMENT.)

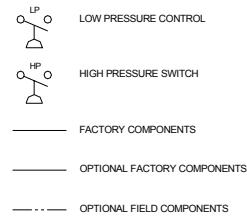
NOTES

FIELD WIRING NOTES

1. ALL FIELD WIRING MUST BE DONE IN COMPLIANCE WITH ALL APPLICABLE LOCAL AND NATIONAL CODES.
2. CONNECT INCOMING POWER LEADS FROM POWER SUPPLY TO L1, AND L3 IN COMPRESSOR CONTACTOR (L1 AND L2 IF TWO POLE CONTACTOR) OR TO L1 AND L3 IN DISCONNECT SWITCH (IF PROVIDED). USE COPPER CONDUCTORS ONLY. (EMPLOYER DES CONDUCTEURS DE CUIVRE SEULEMENT.) PROVIDE EQUIPMENT GROUNDING CONDUCTOR. USE 75°C (MIN.) WIRING.
3. PLACE JUMPER ACROSS P1 AND L1 IN TERMINAL BOARD IF NO OTHER CONTROLLING DEVICE IS INSTALLED.
4. DEFROST HEATERS LOADS SHOULD NOT BE HIGHER THEN THE MAXIMUM HEATERS LOAD INDICATED ON THE UNIT LABEL.

GENERAL NOTES:

- A. CONTACTOR COIL CIRCUIT IS FACTORY CONNECTED TO 230 V SOURCE IN PANEL AS SHOWN
- B. WITH ANY T.P.Co. APPROVED START RELAY USED, CONNECT LEADS TO SAME NUMBERED TERMINALS REGARDLESS OF LOCATION
- C. COMPRESSOR EQUIPPED WITH AN INTERNAL OVERLOAD PROTECTOR. ALLOW TIME FOR RESET.



CONDENSING UNIT WIRING, 230V 60Hz 1 Ph, REMOTE CONDENSER, T1 & T2 defrost options

A REVISION
 MAR 22 2004
WD21-RT2