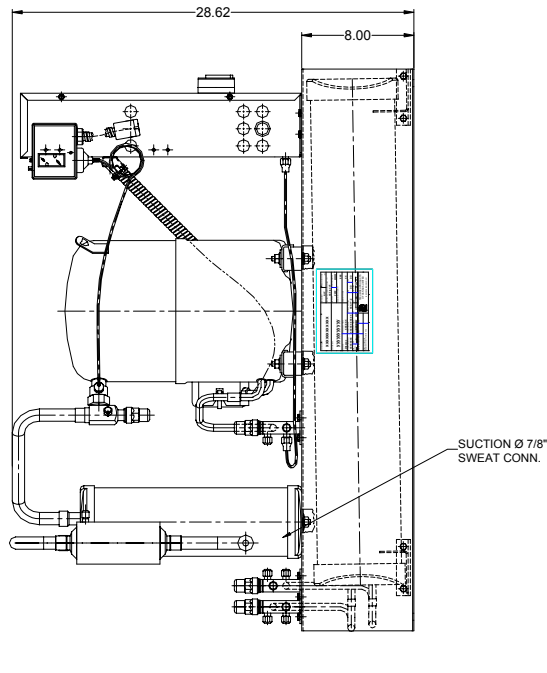
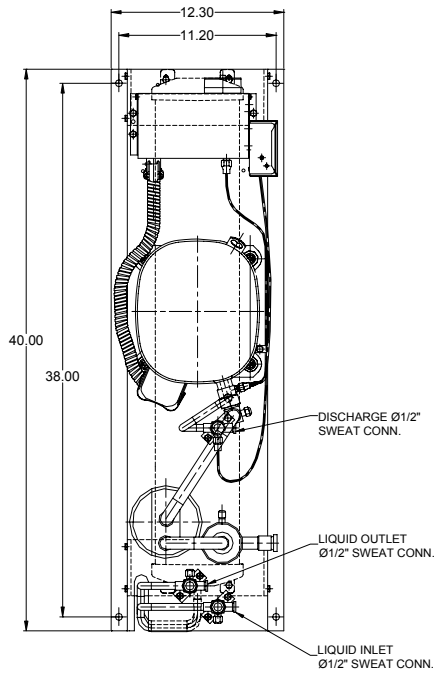
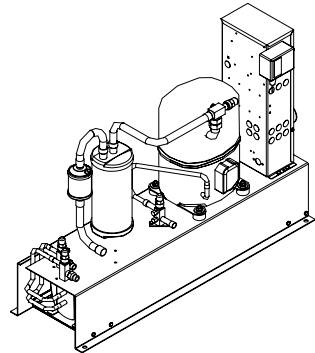




TECUMSEH HERMETIC CONDENSING UNIT

AGA4568EXTRL
TPC__rev 01
July 13, 2004

Model AGA4568EXTRL
BOM 2R5061-2
Remote Condenser 6 HP
Application High Temp
Refrigerant R 22



Model	Dimensions (inch)			Line connections		Pumpdown	Oil Ch.	Gross weight
	L	W	H	Suction	Liquid In/Out	90% @ 90°F	Oz.	Lbs.
AGA4568EXTRL	40.00	12.25	28.62	7/8 Sweat	1/2 Sweat	38.50	65	340

Factory charge 20 psig dry air, **MUST BE EVACUATED**

Evaporator	Condensing Temperatures													
	95°F		100°F		110°F		115°F		120°F		130°F		140°F	
°F	BTUH	Watts	BTUH	Watts	BTUH	Watts	BTUH	Watts	BTUH	Watts	BTUH	Watts	BTUH	Watts
5	31031	4126	29649	4127	26895	4131	25524	4134	24156	4136	21432	4143	38726	4130
10	35461	4348	33870	4367	30692	4405	29107	4425	27524	4444	24366	4484	41221	4526
20	46645	4815	44648	4869	40652	4979	38654	5033	36655	5088	32658	5197	28662	5306
30	60831	5304	58448	5396	53672	5578	51279	5670	48883	5760	44084	5942	39275	6122
40	77905	5806	75155	5937	69636	6196	66867	6325	64094	6454	58530	6710	52947	6964
45	87490	6060	84562	6210	78686	6509	75737	6657	72781	6805	66850	7100	60893	7393
50	97753	6314	94654	6484	88430	6823	85305	6991	82172	7159	75882	7493	69561	7824
55	108681	6567	105415	6758	98853	7137	95557	7326	92251	7514	85612	7887	78937	8258

Performance @ 60 Hz, SuperHeat 20°F, --- SubCooling 15°F

Parts/Specifications

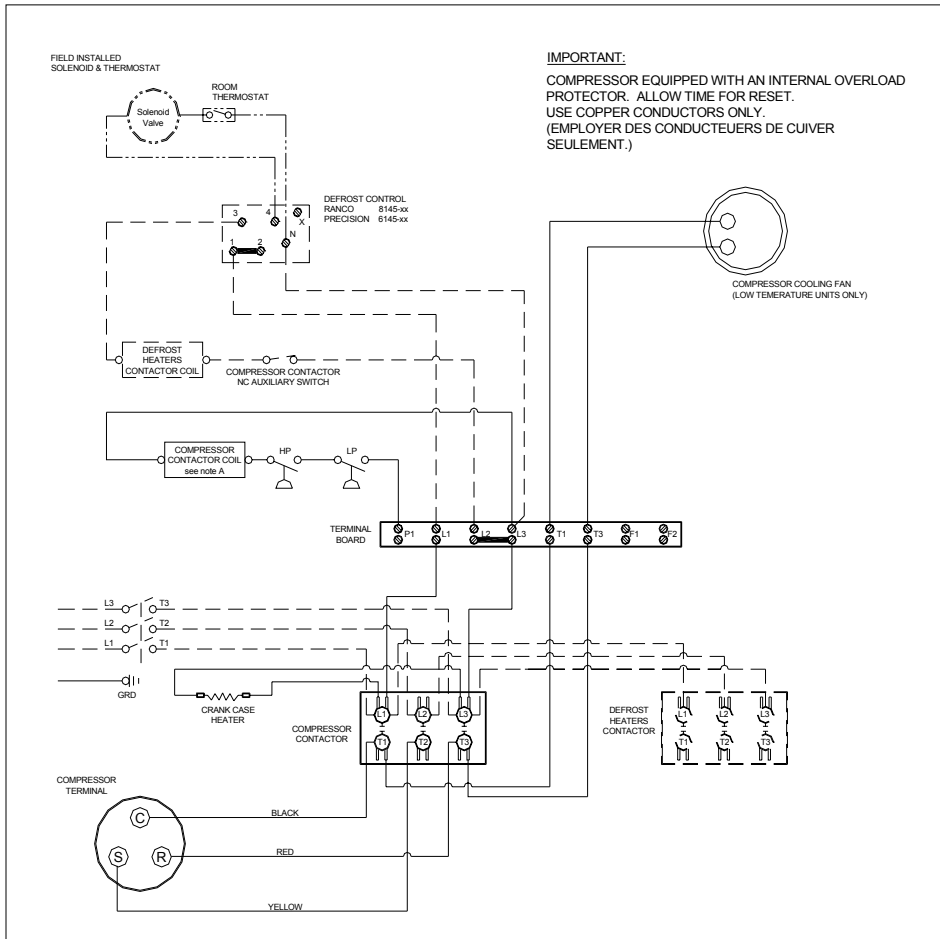
STANDARD		OPTIONAL	
Unit BOM	2R5061-2	Fan Motor	
Unit MODEL	AGA4568EXTRL	Fan Motor RLA	
		Fan Blade	
Refrigeration RANGE	+20F TO +55F		
Design Pressure Low	150	High Pressure switch	84095-1
Design Pressure High	450	Low Pressure Control	84026-D
Volts - HZ - Ph	200-230-60-3	Dual Pressure Control	
Voltage Range	253 - 180		
Min. Circuit Ampacity	27.1	Receiver	51083
Max. Fuse Size	50	Accumulator	TK00044000
		Receiver In Valve	56566
Compressor MODEL	AGA5568EXT	Receiver Out Valve	56566
Compressor BOM	AG144RT-001-A4	Discharge Valve	56566
Compressor LRA	135	Suction Valve	31529-1
Compressor RLA	21.5		
		Suction Filter (7/8)	70822-5S
OverLoad			
Relay		CrankCase Heater	90699
Run Capacitor			
Run Capacitor Rating			
Start Capacitor			
Start Capacitor Rating			
Contactor	91014		
Unit Drawing	DGU1901-1R		
Wiring no Fan controls	WD23-RT2		

BOM INDEX DESCRIPTION

2Rxxxx- 2TnDS

- T1 Defrost timer option
- T2 Defrost timer & Defrost Heaters Contactor
- D Disconnect
- S Solenoid liquid Valve (supplied loose)

WARNING: Installer must validate that tubing is sized in such a manner to insure adequate oil return. Oil level may require adjustment for long pipe runs.



IMPORTANT:
 COMPRESSOR EQUIPPED WITH AN INTERNAL OVERLOAD PROTECTOR. ALLOW TIME FOR RESET.
 USE COPPER CONDUCTORS ONLY.
 (EMPLOYER DES CONDUCTEURS DE CUIVRE SEULEMENT.)

NOTES

FIELD WIRING NOTES

1. ALL FIELD WIRING MUST BE DONE IN COMPLIANCE WITH ALL APPLICABLE LOCAL AND NATIONAL CODES.
2. CONNECT INCOMING POWER LEADS FROM POWER SUPPLY TO L1, L2, AND L3 IN COMPRESSOR CONTACTOR OR TO L1, L2 AND L3 IN DISCONNECT SWITCH (IF PROVIDED). USE COPPER CONDUCTORS ONLY. (EMPLOYER DES CONDUCTEURS DE CUIVRE SEULEMENT.) PROVIDE EQUIPMENT GROUNDING CONDUCTOR. USE 75° C (MIN.) WIRING.
3. PLACE JUMPER ACROSS P1 AND L1 IN TERMINAL BOARD IF NO OTHER CONTROLLING DEVICE IS INSTALLED.
4. DEFROST HEATERS LOADS SHOULD NOT BE HIGHER THEN THE MAXIMUM HEATERS LOAD INDICATED ON THE UNIT LABEL.

GENERAL NOTES:

- A. CONTACTOR COIL CIRCUIT IS FACTORY CONNECTED TO 230 V SOURCE IN PANEL AS SHOWN
- B. COMPRESSOR EQUIPPED WITH AN INTERNAL OVERLOAD PROTECTOR. ALLOW TIME FOR RESET.

LP LOW PRESSURE CONTROL

HP HIGH PRESSURE SWITCH

— FACTORY COMPONENTS

- - - OPTIONAL FACTORY COMPONENTS

..... OPTIONAL FIELD COMPONENTS

CONDENSING UNIT WIRING, 230V 60Hz 3 Ph, Remote Condenser, T1 & T2 defrost options

A
 REVISION

WD23-RT2
 MAR 22 2004