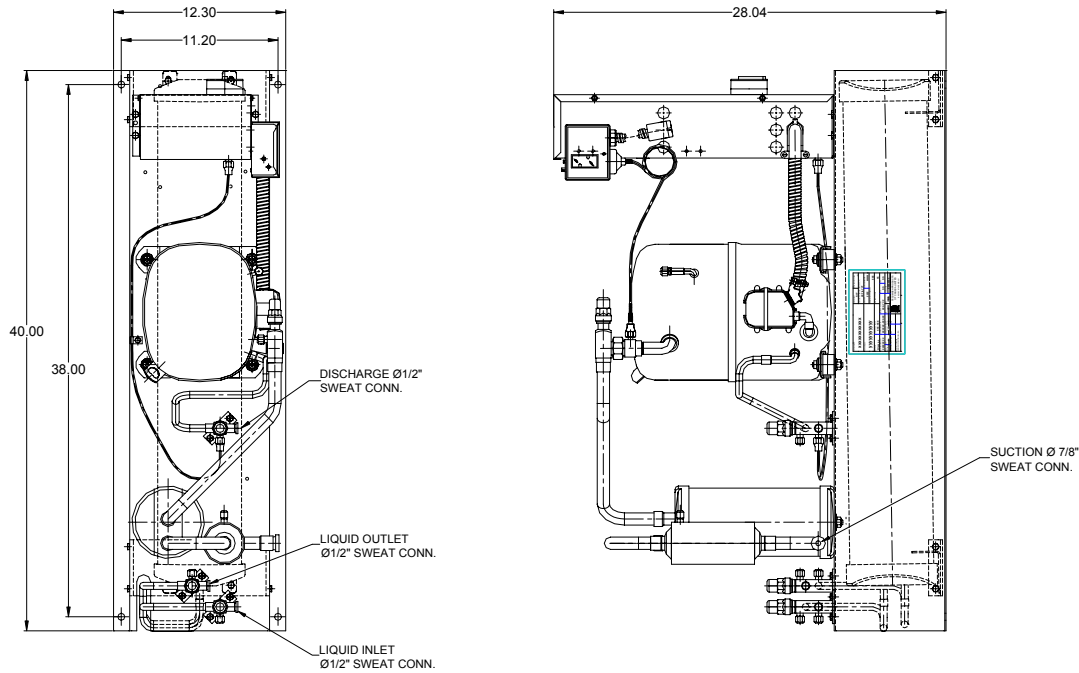
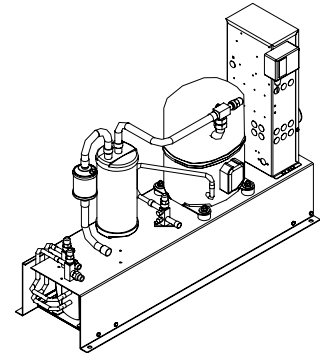




# TECUMSEH HERMETIC CONDENSING UNIT

AWA7515ZXDRL  
TPC\_\_rev 01  
July 13, 2004

**Model** AWA7515ZXDRL  
**BOM** 2R3220-2  
**Remote Condenser** 2 HP  
**Application** Medium Temp  
**Refrigerant** R 404A



Model	Dimensions (inch)			Line connections		Pumpdown	Oil Ch.	Gross weight
	L	W	H	Suction	Liquid In/Out	90% @ 90°F	Oz.	Lbs.
<b>AWA7515ZXDRL</b>	40.00	12.25	28.04	5/8 Sweat	1/2 Sweat	33.50	38	180

Factory charge 20 psig dry air, **MUST BE EVACUATED**

Evaporator	Condensing Temperatures													
	90°F		95°F		100°F		110°F		120°F		130°F		140°F	
°F	BTUH	Watts	BTUH	Watts	BTUH	Watts	BTUH	Watts	BTUH	Watts	BTUH	Watts	BTUH	Watts
-10	10113	1818	9158	1811	8430	1807	7440	1801	6711	1796	5811	1789	4309	1776
-5	11869	1871	10740	1876	9848	1883	8555	1897	7559	1910	6428	1916	4730	1913
0	13920	1953	12615	1971	11555	1988	9955	2022	8686	2050	7318	2070	5418	2076
5	16233	2056	14749	2085	13519	2113	11604	2165	10057	2209	8446	2240	6339	2255
10	18774	2169	17108	2209	15705	2248	13470	2318	11639	2376	9780	2418	7460	2440
15	21509	2285	19658	2336	18079	2384	15519	2471	13398	2543	11284	2595	8746	2624
<b>20</b>	<b>24404</b>	<b>2394</b>	<b>22365</b>	<b>2455</b>	<b>20607</b>	<b>2512</b>	<b>17716</b>	<b>2616</b>	<b>15300</b>	<b>2700</b>	<b>12926</b>	<b>2762</b>	<b>10163</b>	<b>2797</b>
30	30539	2553	28117	2633	25992	2709	22422	2842	19397	2950	16487	3028	13258	3073

Performance @ 60 Hz, ReturnGas 40°F, --- SubCooling 0°F

Parts/Specifications

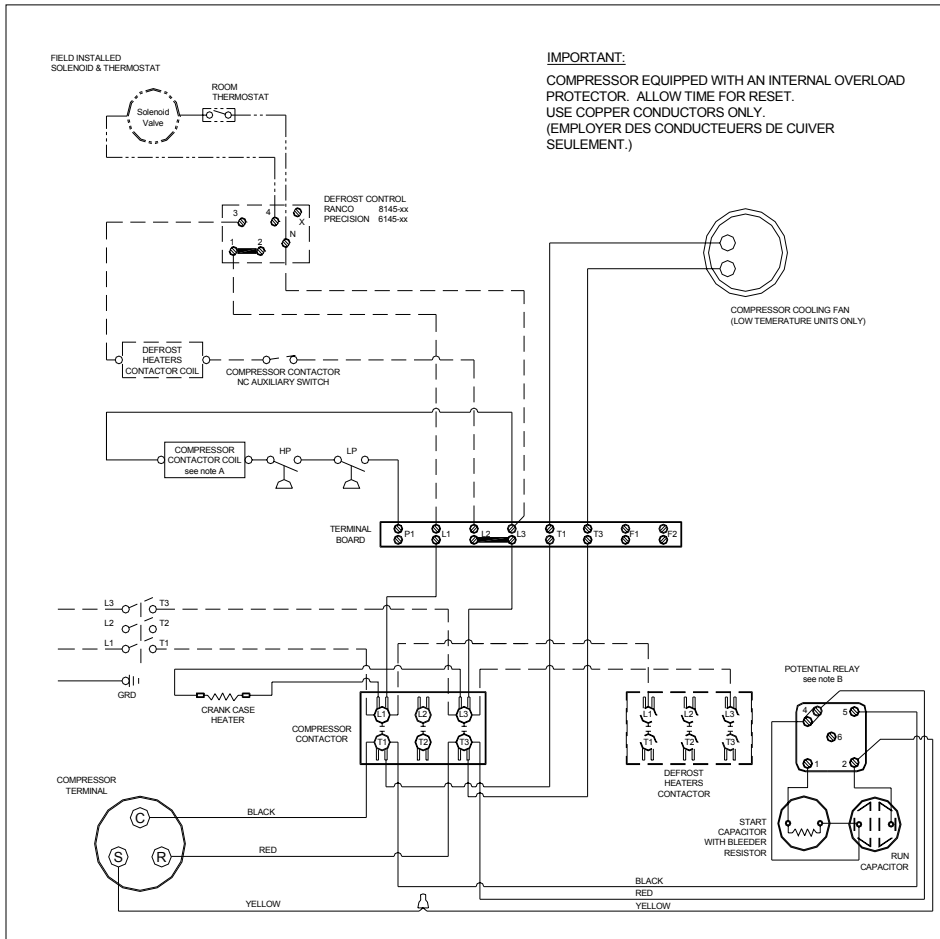
STANDARD		OPTIONAL	
Unit BOM	2R3220-2	Fan Motor	
Unit MODEL	AWA7515ZXDRL	Fan Motor RLA	
		Fan Blade	
Refrigeration RANGE	-10F TO +30F		
Design Pressure Low	181	High Pressure switch	84095-2
Design Pressure High	450	Low Pressure Control	84026-D
Volts - HZ - Ph	208-230-60-1	Dual Pressure Control	
Voltage Range	253 - 197		
Min. Circuit Ampacity	20.2	Receiver	51083
Max. Fuse Size	35	Accumulator	TK00042000
		Receiver In Valve	56566
Compressor MODEL	AWA7515ZXD	Receiver Out Valve	56566
Compressor BOM	AW612ET-111-A2	Discharge Valve	56566
Compressor LRA	96.8	Suction Valve	31531-1
Compressor RLA	16.0	Process Valve	
		Suction filter (5/8)	70822-6S
OverLoad	Internal		
Relay	820ARR3J56	CrankCase Heater	91022-1
Run Capacitor	85PR370F17		
Run Capacitor Rating	35MFD 370V(M)VDE		
Start Capacitor	85PS330D13		
Start Capacitor Rating	108-130 MFD 330V		
Contactor	91014		
Unit Drawing	DGU1918-3R		
Wiring no Fan controls	WD21-RT2		

BOM INDEX DESCRIPTION

2Rxxxx- 2TnDS

- T1 Defrost timer option
- T2 Defrost timer & Defrost Heaters Contactor
- D Disconnect
- S Solenoid liquid Valve (supplied loose)

**WARNING:** Installer must validate that tubing is sized in such a manner to insure adequate oil return. Oil level may require adjustment for long pipe runs.



**IMPORTANT:**  
 COMPRESSOR EQUIPPED WITH AN INTERNAL OVERLOAD PROTECTOR. ALLOW TIME FOR RESET.  
 USE COPPER CONDUCTORS ONLY.  
 (EMPLOYER DES CONDUCTEURS DE CUIVRE SEULEMENT.)

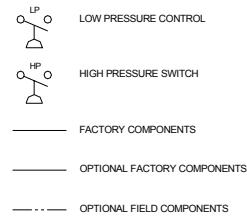
NOTES

FIELD WIRING NOTES

- ALL FIELD WIRING MUST BE DONE IN COMPLIANCE WITH ALL APPLICABLE LOCAL AND NATIONAL CODES.
- CONNECT INCOMING POWER LEADS FROM POWER SUPPLY TO L1, AND L3 IN COMPRESSOR CONTACTOR (L1 AND L2 IF TWO POLE CONTACTOR) OR TO L1 AND L3 IN DISCONNECT SWITCH (IF PROVIDED). USE COPPER CONDUCTORS ONLY. (EMPLOYER DES CONDUCTEURS DE CUIVRE SEULEMENT.) PROVIDE EQUIPMENT GROUNDING CONDUCTOR. USE 75°C (MIN.) WIRING.
- PLACE JUMPER ACROSS P1 AND L1 IN TERMINAL BOARD IF NO OTHER CONTROLLING DEVICE IS INSTALLED.
- DEFROST HEATERS LOADS SHOULD NOT BE HIGHER THEN THE MAXIMUM HEATERS LOAD INDICATED ON THE UNIT LABEL.

GENERAL NOTES:

- CONTACTOR COIL CIRCUIT IS FACTORY CONNECTED TO 230 V SOURCE IN PANEL AS SHOWN
- WITH ANY T.P.Co. APPROVED START RELAY USED, CONNECT LEADS TO SAME NUMBERED TERMINALS REGARDLESS OF LOCATION
- COMPRESSOR EQUIPPED WITH AN INTERNAL OVERLOAD PROTECTOR. ALLOW TIME FOR RESET.



CONDENSING UNIT WIRING, 230V 60Hz 1 Ph,  
 REMOTE CONDENSER,  
 T1 & T2 defrost options

**A** REVISION  
 MAR 22 2004  
**WD21-RT2**