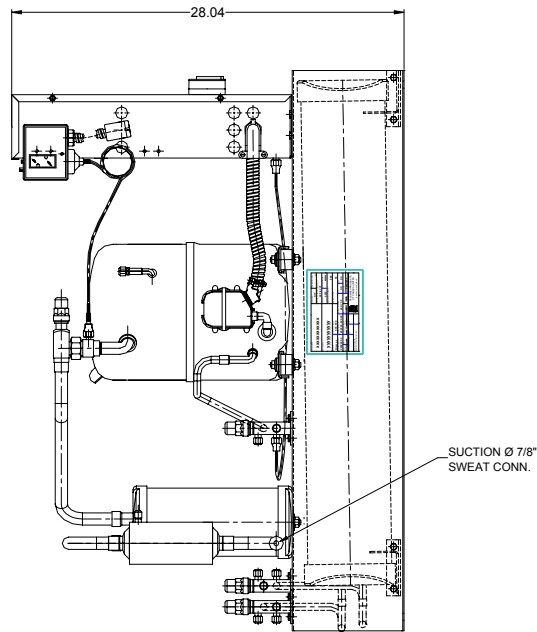
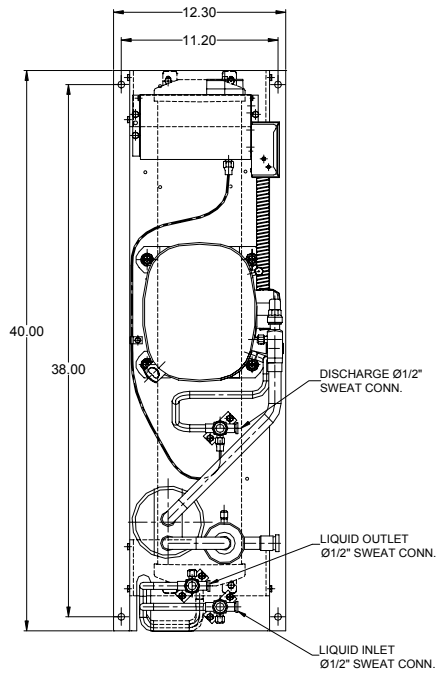
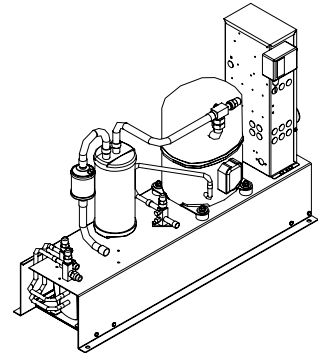




TECUMSEH HERMETIC CONDENSING UNIT

AWA7515ZXTRL
TPC__rev 01
July 13, 2004

Model AWA7515ZXTRL
BOM 2R3219-2
Remote Condenser 2 HP
Application Medium Temp
Refrigerant R 404A



Model	Dimensions (inch)			Line connections		Pumpdown	Oil Ch.	Gross weight
	L	W	H	Suction	Liquid In/Out	90% @ 90°F	Oz.	Lbs.
AWA7515ZXTRL	40.00	12.25	28.04	5/8 Sweat	1/2 Sweat	33.50	38	180

Factory charge 20 psig dry air, **MUST BE EVACUATED**

Evaporator	Condensing Temperatures													
	90°F		95°F		100°F		110°F		120°F		130°F		140°F	
°F	BTUH	Watts	BTUH	Watts	BTUH	Watts	BTUH	Watts	BTUH	Watts	BTUH	Watts	BTUH	Watts
-10	9927	1704	9259	1688	8582	1671	7212	1636	5842	1594	4494	1541	3193	1470
-5	11490	1807	10779	1803	10054	1799	8577	1787	7085	1767	5600	1732	4147	1679
0	13266	1913	12500	1922	11718	1930	10114	1942	8479	1944	6836	1929	5210	1893
5	15242	2017	14412	2040	13561	2061	11809	2098	10010	2122	8189	2128	6369	2111
10	17405	2118	16499	2154	15570	2189	13649	2251	11666	2298	9646	2326	7611	2328
15	19741	2210	18751	2261	17732	2309	15621	2397	13434	2469	11193	2518	8923	2541
20	22239	2290	21152	2356	20034	2419	17713	2534	15300	2630	12819	2703	10293	2746
30	27663	2402	26354	2499	25006	2591	22202	2762	19275	2910	16250	3031	13149	3119

Performance @ 60 Hz, ReturnGas 40°F, --- SubCooling 0°F

Parts/Specifications

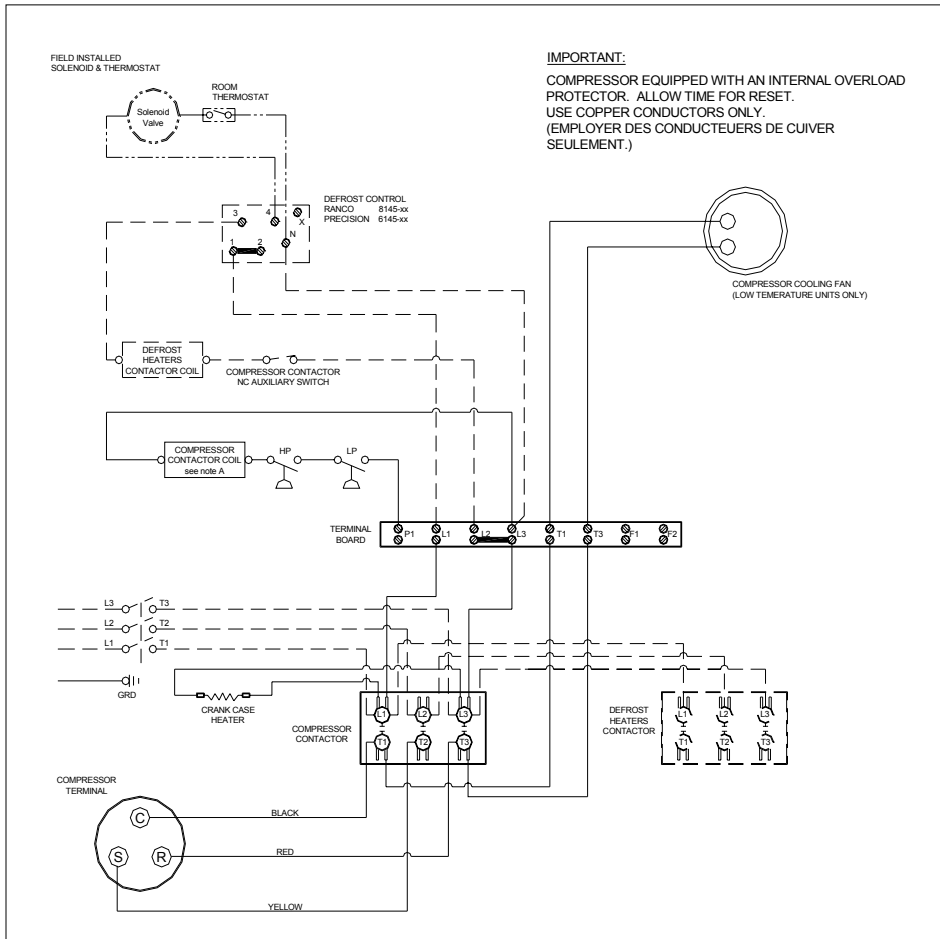
STANDARD		OPTIONAL	
Unit BOM	2R3219-2	Fan Motor	
Unit MODEL	AWA7515ZXTRL	Fan Motor RLA	
		Fan Blade	
Refrigeration RANGE	-10F TO +30F		
Design Pressure Low	181	High Pressure switch	84095-2
Design Pressure High	450	Low Pressure Control	84026-D
Volts - HZ - Ph	200-230-60-3	Dual Pressure Control	
Voltage Range	253 - 180		
Min. Circuit Ampacity	10.6	Receiver	51083
Max. Fuse Size	20	Accumulator	TK00042000
		Receiver In Valve	56566
Compressor MODEL	AWA7515ZXTR	Receiver Out Valve	56566
Compressor BOM	AW612RT-121-A2	Discharge Valve	56566
Compressor LRA	63.4	Suction Valve	31531-1
Compressor RLA	8.3	Process Valve	
		Suction Filter (5/8)	70822-6S
OverLoad	Internal		
Relay		CrankCase Heater	91022-1
Run Capacitor			
Run Capacitor Rating			
Start Capacitor			
Start Capacitor Rating			
Contactor	91014		
Unit Drawing	DGU1918-3R		
Wiring no Fan controls	WD23-RT2		

BOM INDEX DESCRIPTION

2Rxxxx- 2TnDS

- T1 Defrost timer option
- T2 Defrost timer & Defrost Heaters Contactor
- D Disconnect
- S Solenoid liquid Valve (supplied loose)

WARNING: Installer must validate that tubing is sized in such a manner to insure adequate oil return. Oil level may require adjustment for long pipe runs.



NOTES

FIELD WIRING NOTES

1. ALL FIELD WIRING MUST BE DONE IN COMPLIANCE WITH ALL APPLICABLE LOCAL AND NATIONAL CODES.
2. CONNECT INCOMING POWER LEADS FROM POWER SUPPLY TO L1, L2, AND L3 IN COMPRESSOR CONTACTOR OR TO L1, L2 AND L3 IN DISCONNECT SWITCH (IF PROVIDED). USE COPPER CONDUCTORS ONLY. (EMPLOYER DES CONDUCTEURS DE CUIVRE SEULEMENT.) PROVIDE EQUIPMENT GROUNDING CONDUCTOR. USE 75°C (MIN.) WIRING.
3. PLACE JUMPER ACROSS P1 AND L1 IN TERMINAL BOARD IF NO OTHER CONTROLLING DEVICE IS INSTALLED.
4. DEFROST HEATERS LOADS SHOULD NOT BE HIGHER THEN THE MAXIMUM HEATERS LOAD INDICATED ON THE UNIT LABEL.

GENERAL NOTES:

- A. CONTACTOR COIL CIRCUIT IS FACTORY CONNECTED TO 230 V SOURCE IN PANEL AS SHOWN
- B. COMPRESSOR EQUIPPED WITH AN INTERNAL OVERLOAD PROTECTOR. ALLOW TIME FOR RESET.

LP LOW PRESSURE CONTROL

HP HIGH PRESSURE SWITCH

FACTORY COMPONENTS

OPTIONAL FACTORY COMPONENTS

OPTIONAL FIELD COMPONENTS

CONDENSING UNIT WIRING, 230V 60Hz 3 Ph, Remote Condenser, T1 & T2 defrost options

A
REVISION

MAR 22 2004
WD23-RT2